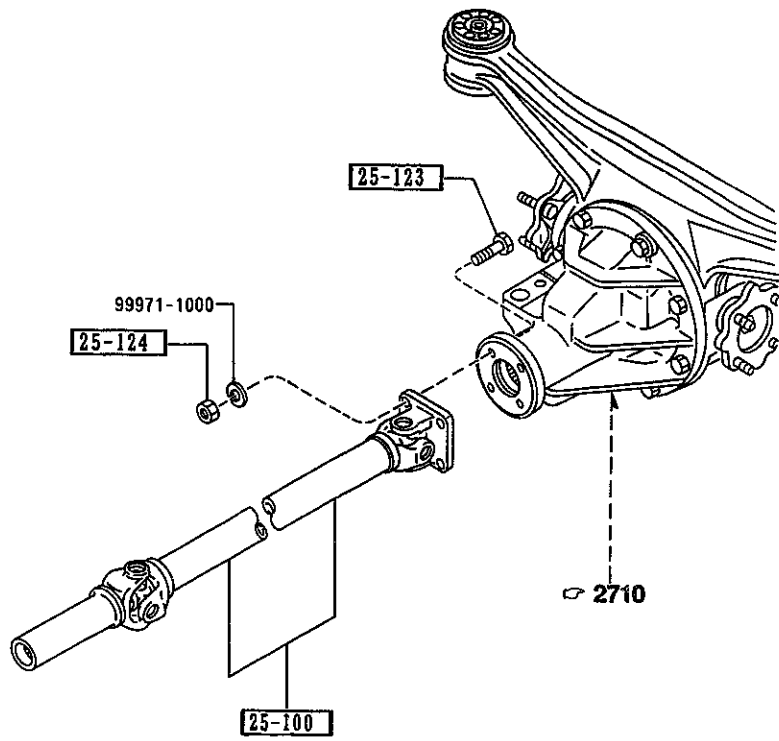


2505 REAR PROPELLER SHAFT

2505 -1 * REAR PROPELLER SHAFT



PART NO.	QTY	MODEL/RESTRICTION	MODEL/RESTRICTION	MODEL/RESTRICTION	FROM-TO
25-100		SHAFT, PROPELLER-FRT			
MF04-25-100	1				
25-123		BOLT			
P011-25-123	4				
25-124		NUT			
1368-25-124	4				



AUNA04

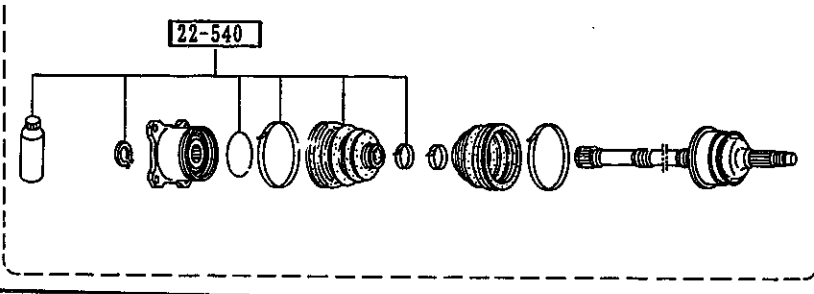
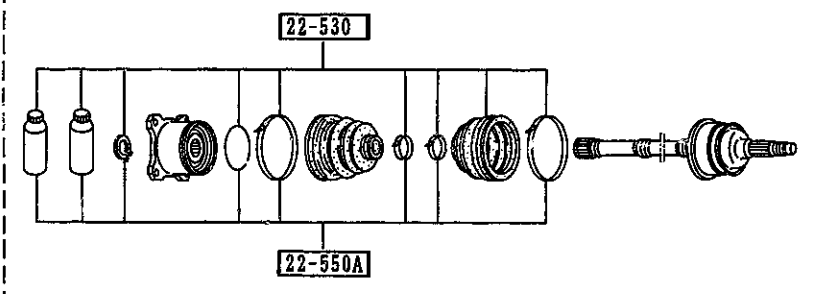
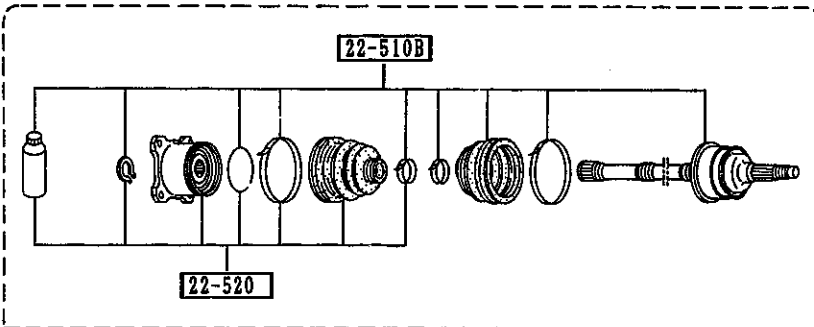
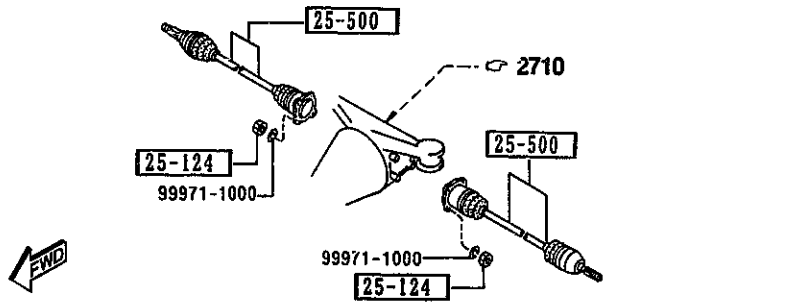
CAT. AUNA04-03

1995-04

1-C11

2550 REAR DRIVE SHAFT

2550 -1 * REAR DRIVE SHAFT

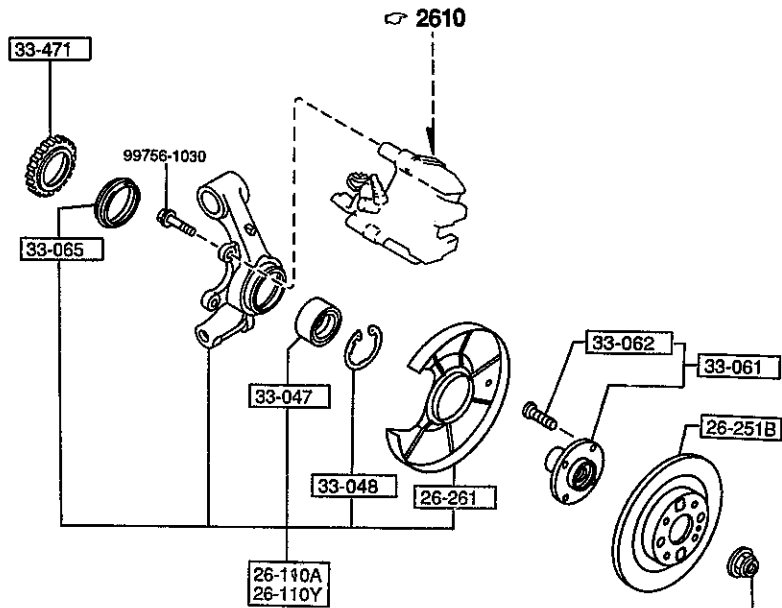


PART NO.	QTY	MODEL/RESTRICTION	MODEL/RESTRICTION	MODEL/RESTRICTION	FROM-TO
22-510B		JOINT SET, OUTER			
MD02-22-510	2	(W/O A. LOCK BRAKE)			
MD03-22-510	2	(A. LOCK BRAKE)			
22-520		JOINT SET, INNER			
MD02-22-520	2				
22-530		BOOT SET, OUTER JOINT			
M090-22-530	2				
22-540		BOOT SET, INNER JOINT			
M090-22-540	2				
22-550A		CLIP SET, DRIVE SHAFT			
M090-22-550	2				
25-124		NUT			
1368-25-124	8				
25-500		SHAFT, DRIVE			
MD02-25-500	2	(W/O A. LOCK BRAKE)			
MD03-25-500	2	(A. LOCK BRAKE)			

AUNA04

CAT. AUNA04-03

1995-04



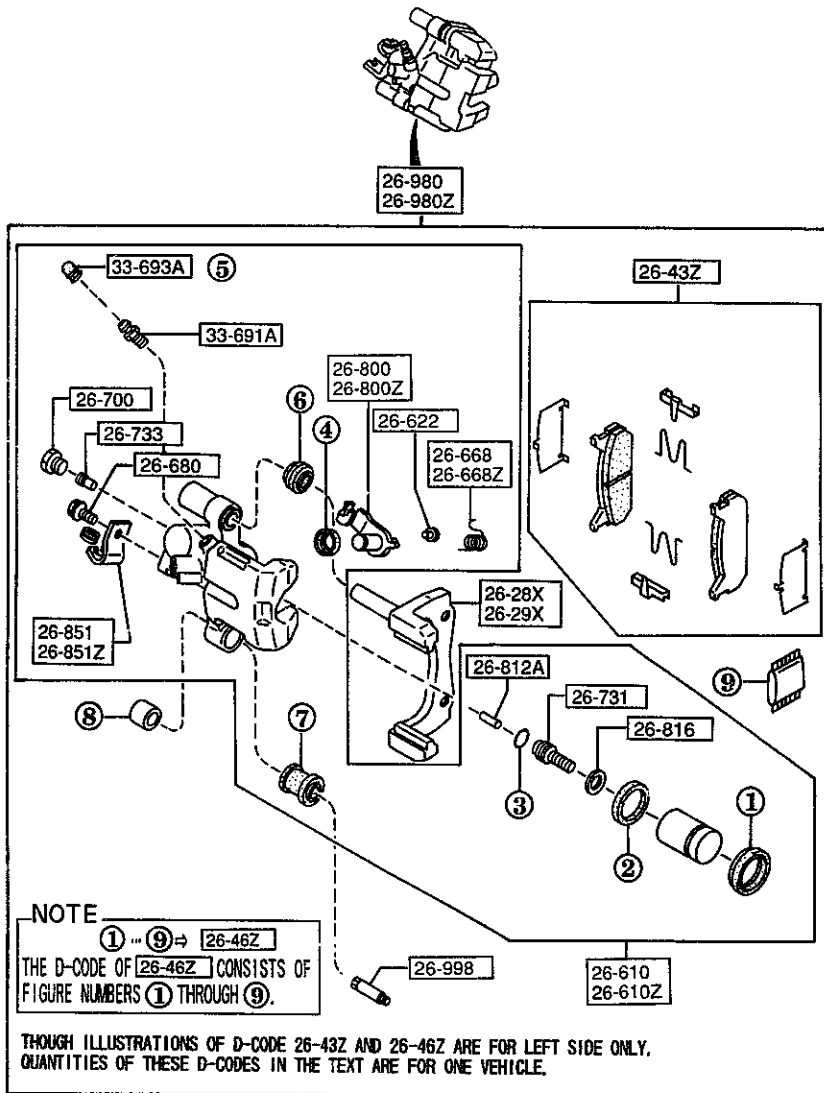
PART NO.	QTY	MODEL/RESTRICTION	MODEL/RESTRICTION	MODEL/RESTRICTION	FROM-TO
26-110A		+			
NA75-26-130	1	KNUCKLE(R), REAR (W/O A. LOCK BRAKE)			
NA80-26-130	1	(A. LOCK BRAKE)			
26-110Y		+			
NA75-26-140	1	KNUCKLE(L), REAR (W/O A. LOCK BRAKE)			
NA80-26-140	1	(A. LOCK BRAKE)			
26-251B		+			
BR74-26-251A ANC(BR74-26-251B)	2	PLATE, DISC			-3C22
BR74-26-251B	2				3C22-
26-261		+			
B530-26-261B	2	COVER, DUST			
33-042		+			
NA01-33-042B ANC(D06Y-33-042)	2	NUT W/WASHER			-4126
D06Y-33-042	2	W/WASHER			4126-
33-047		+			
B455-33-047B	2	BEARING, WHEEL			
33-048		+			
H260-33-048	2	RING, RETAINING-DISC PLATE			
33-061		+			
B01A-33-060	2	HUB, WHEEL			
33-062		+			
B01Y-33-062	8	BOLT, HUB			
33-065		+			
G304-33-065	2	SEAL, OIL-AXLE			
33-471		+			
B603-33-471	2	ROTOR, SENSOR-FRT A. B. (A. LOCK BRAKE)			

3C22 NA3***-509108
4126 NA3***-511068

← FWD
AUNA04

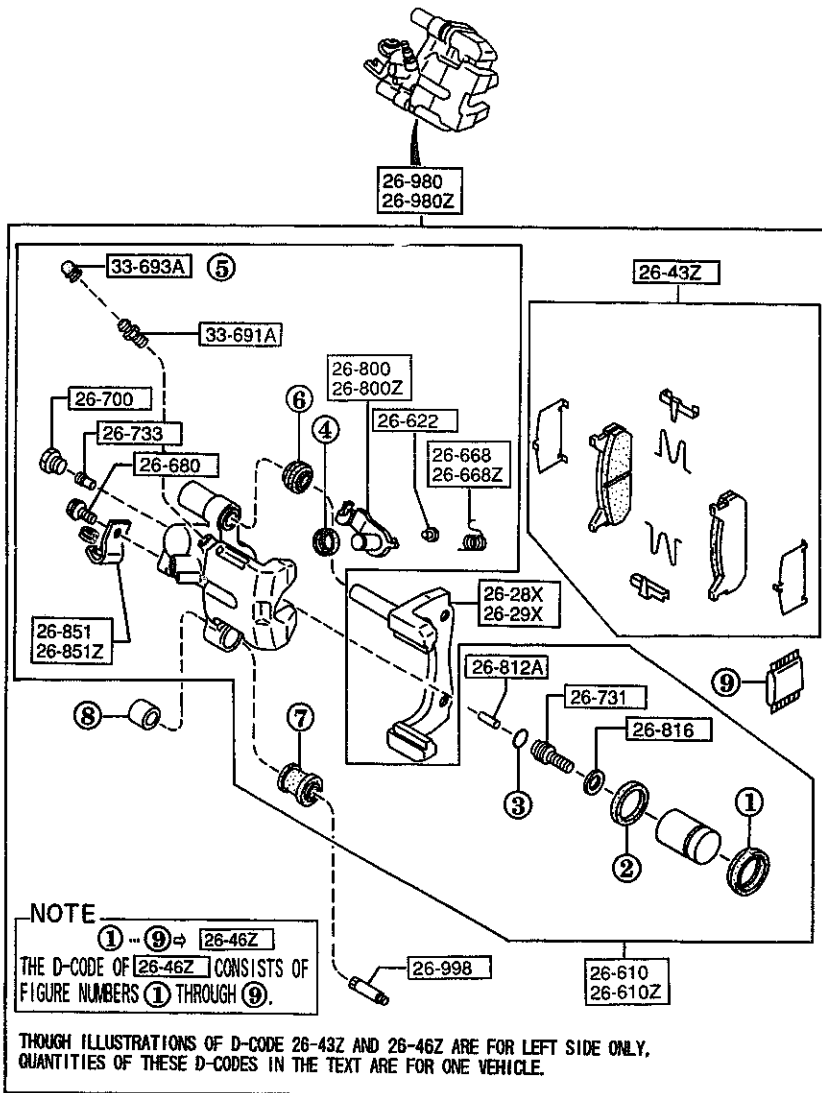
CAT. AUNA04-03

1995-04



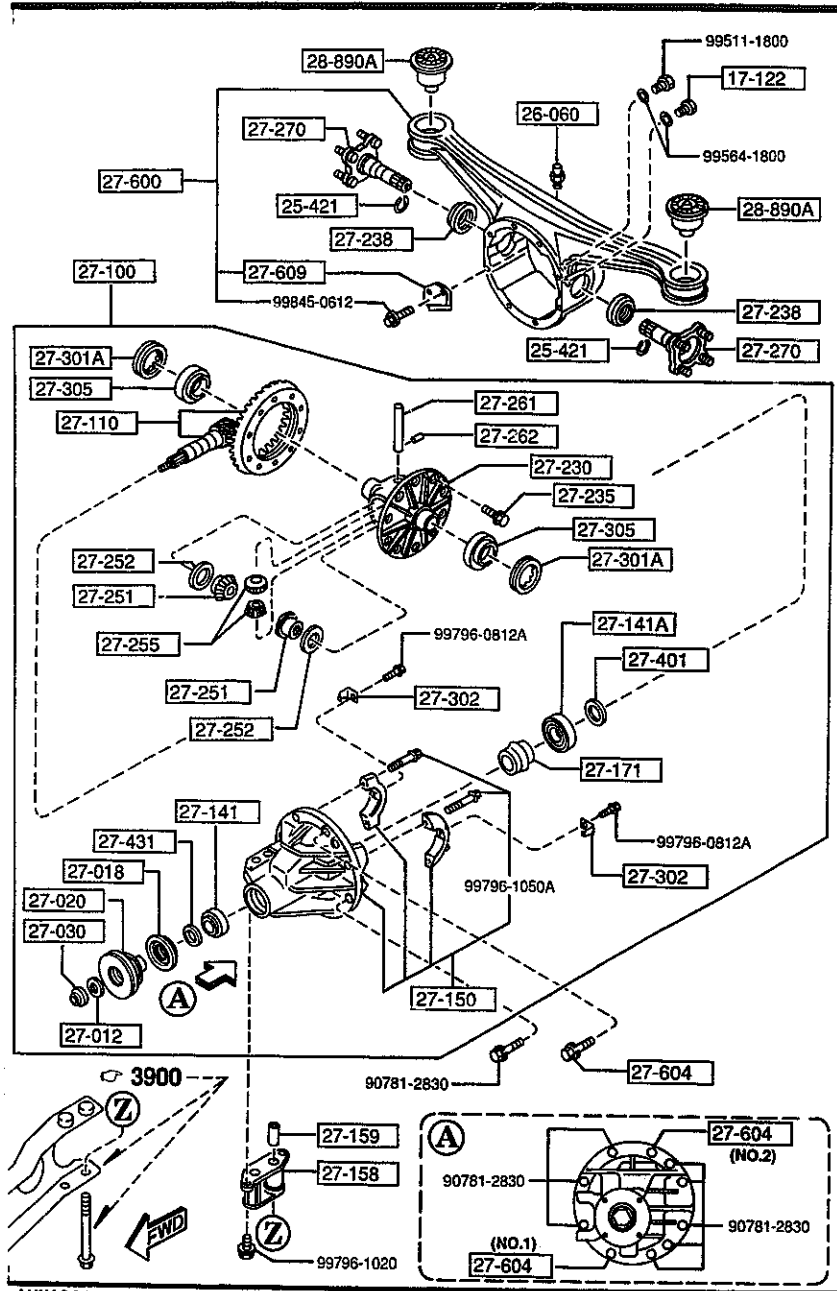
PART NO.	QTY	MODEL/RESTRICTION	MODEL/RESTRICTION	MODEL/RESTRICTION	FROM-TO
26-28X NA75-26-28X	1	SUPPORT(R), MOUNTING			
26-29X NA75-26-29X	1	SUPPORT(L), MOUNTING			
26-43Z NAY5-26-43Z	1	PAD SET, RR CALIPER			
26-46Z NAV1-26-46Z	1	SEAL & BOOT SET, CAL-RR			
26-610 NA75-26-61X	1	BODY & PISTON(R), CALIPER			
26-610Z NA75-26-71X	1	BODY & PISTON(L), CALIPER			
26-622 BWOH-26-696	2	PIN, STOPPER-RR CALIPER			
26-668 BWOH-26-668	1	SPRING(R), LEVER			
26-668Z BWOH-26-669	1	SPRING(L), LEVER			
26-680 BWOH-26-680	2	BOLT			
26-700 BWOH-26-700	2	PLUG, SCREW			
26-731 GA2E-26-731	2	SPINDLE, ADJUSTER			
26-733 BWOH-26-733	2	GEAR, ADJUST			
26-800 BR76-26-800	1	LEVER(R), OPERATING			





PART NO.	QTY	MODEL/RESTRICTION	MODEL/RESTRICTION	MODEL/RESTRICTION	FROM-TO
26-800Z BR76-26-810	1	LEVER(L), OPERATING			
26-812A BWOH-26-812	2	ROD, PUSH-FRT CALIPER			
26-816 GA2E-26-816	2	RING, SNAP-RR CALIPER			
26-851 BWOH-26-851	1	BRACKET(R), CABLE			
26-851Z BWOH-26-861	1	BRACKET(L), CABLE			
26-980 NA75-26-980	1	CALIPER(R), RR BRAKE			
26-980Z NA75-26-990	1	CALIPER(L), RR BRAKE			
26-998 BWOH-26-998A	2	PIN, GUIDE			
33-691A BWOH-26-691	2	SCREW, BLEEDER			
33-693A 0259-33-693	2	CAP, BLEEDER SCREW			

2710 REAR DIFFERENTIALS
(NORMAL DIFF.)



AUNA04

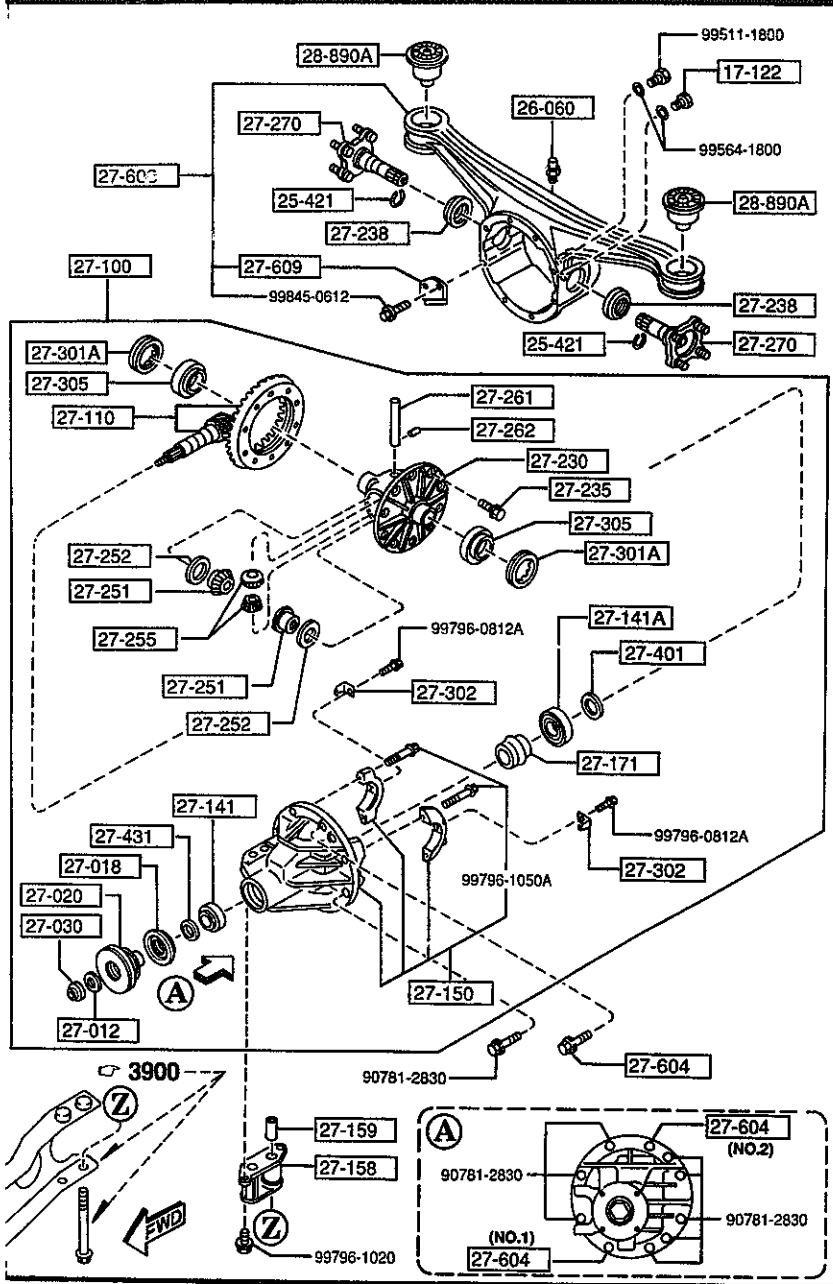
2710 -1 REAR DIFFERENTIALS
(NORMAL DIFF.)

PART NO.	QTY	MODEL/RESTRICTION	MODEL/RESTRICTION	MODEL/RESTRICTION	FRON-TO
17-122		PLUG,MAGNET			
0810-17-121	1				
25-421		CLIP			
6003-25-421	2				
26-060		BREATHER			
0730-26-060	1				
27-012		WASHER			
0223-27-012	1				
27-018		SEAL,OIL			
M054-27-165	1				-3901
MA02-27-165	1				3901-
27-020		FLANGE,COMPANION			
MA02-27-120	1 (AT)				
MA03-27-120	1 (MT)				
27-030		NUT,LOCK			
0223-27-030	1				
27-100		DRIVING & DIFF.			
MA02-27-100	1 (AT)				
MA03-27-100	1				-3901
A (MA03-27-100A)	1 (MT)				3901-
MA03-27-100A	1 (MT)				
27-110		GEAR SET,FINAL			
M068-27-110A	1	R=4.196			
27-141		BEARING,PINION			
0755-27-210	1				
27-141A		BEARING,PINION			
M025-27-210	1				
27-150		CARRIER,DIFFERENTIAL			
MA02-27-150	1				
3901 NA3***-502360					

CAT. AUNA04-03

1995-04

2710 REAR DIFFERENTIALS
(NORMAL DIFF.)



AUNA04

2710 -2 REAR DIFFERENTIALS
(NORMAL DIFF.)

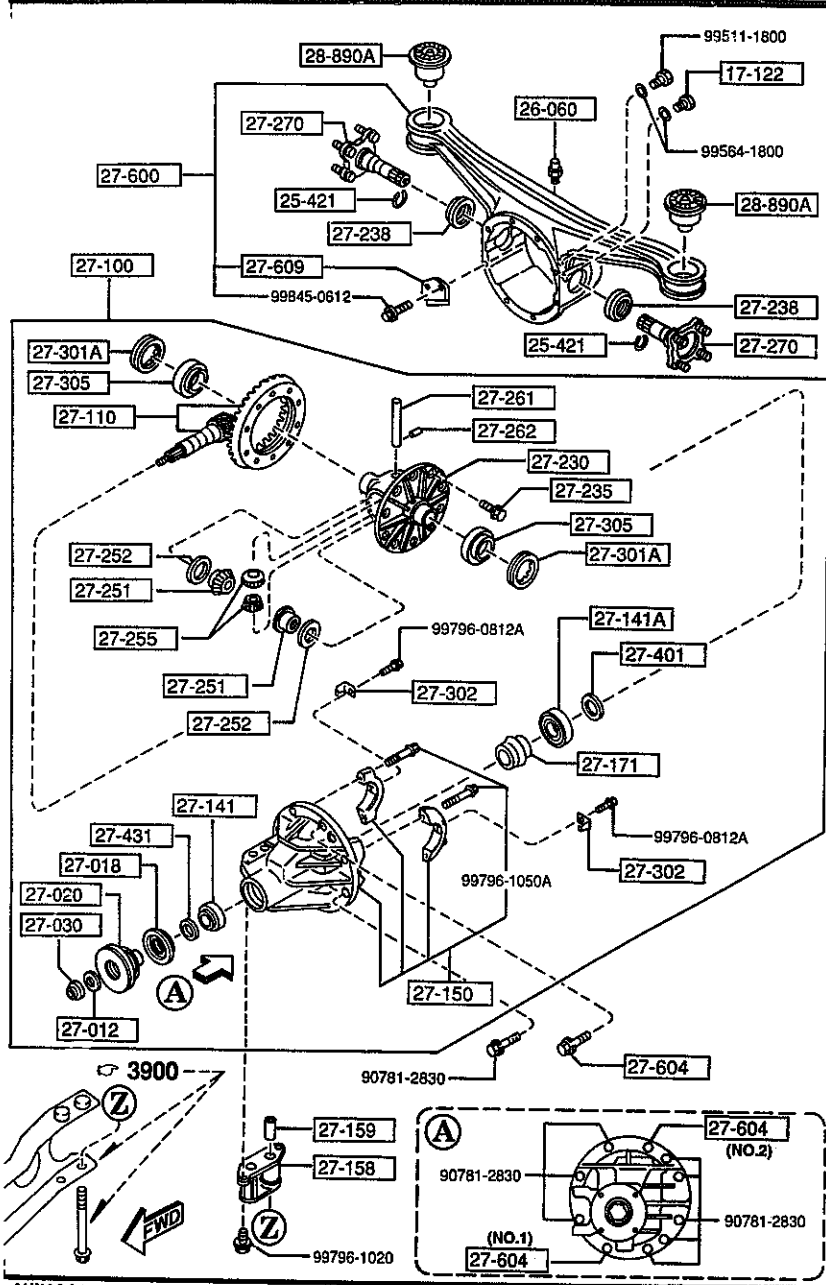
PART NO.	QTY	MODEL/RESTRICTION	MODEL/RESTRICTION	MODEL/RESTRICTION	FROM-TO
27-158		SPACE			
T020-27-158A	1				
27-159		PIN, TUBULAR			
T020-27-159A	1				
27-171		PIECE, DISTANCE			
M035-27-171	1				
27-230		CASE			
M069-27-231	1				
27-235		BOLT, RING GEAR			
8051-27-235	10	D=10MM			
8051-27-236	10	D=10.2MM			
27-238		SEAL, OIL			
M0A1-27-238	2				-3901
MA02-27-238	2				3901-
27-251		GEAR, DIFF. SIDE			
M069-27-251	2				
27-252		WASHER			
0290-27-252	2	T=2MM			
0290-27-253	2	T=2.1MM			
0290-27-254	2	T=2.2MM			
0290-27-256	2	T=2.05MM			
0290-27-259	2	T=2.15MM			
27-255		PINION, DIFFERENTIAL			
M025-27-255B	2				
27-261		SHAFT, DIFF. PINION			
M025-27-261A	1				
3901 NA3***-502360					

CAT. AUNA04-03

1995-04

2710 REAR DIFFERENTIALS
(NORMAL DIFF.)

2710 -3 REAR DIFFERENTIALS
(NORMAL DIFF.)



PART NO.	QTY	MODEL/RESTRICTION	MODEL/RESTRICTION	MODEL/RESTRICTION	FROM-TO
27-262		PIN			
0114-27-262	1				
27-270		YOKE, DIFFERENTIAL			
M055-27-270C	2				
27-301A		SCREW, ADJUST			
0290-27-301	2				
27-302		PLATE, LOCK			
0290-27-302	2				
27-305		BEARING			
0221-27-350	2				
27-401		SPACER			
0223-27-401A	1	T=3.08MM			
0223-27-402A	1	T=3.11MM			
0223-27-403A	1	T=3.14MM			
0223-27-404A	1	T=3.17MM			
0223-27-405A	1	T=3.2MM			
0223-27-406A	1	T=3.23MM			
0223-27-407A	1	T=3.26MM			
0223-27-408A	1	T=3.29MM			
0223-27-409A	1	T=3.32MM			
0223-27-411A	1	T=3.35MM			
0223-27-412A	1	T=3.38MM			
0223-27-413A	1	T=3.41MM			
0223-27-414A	1	T=3.44MM			
0223-27-415A	1	T=3.47MM			

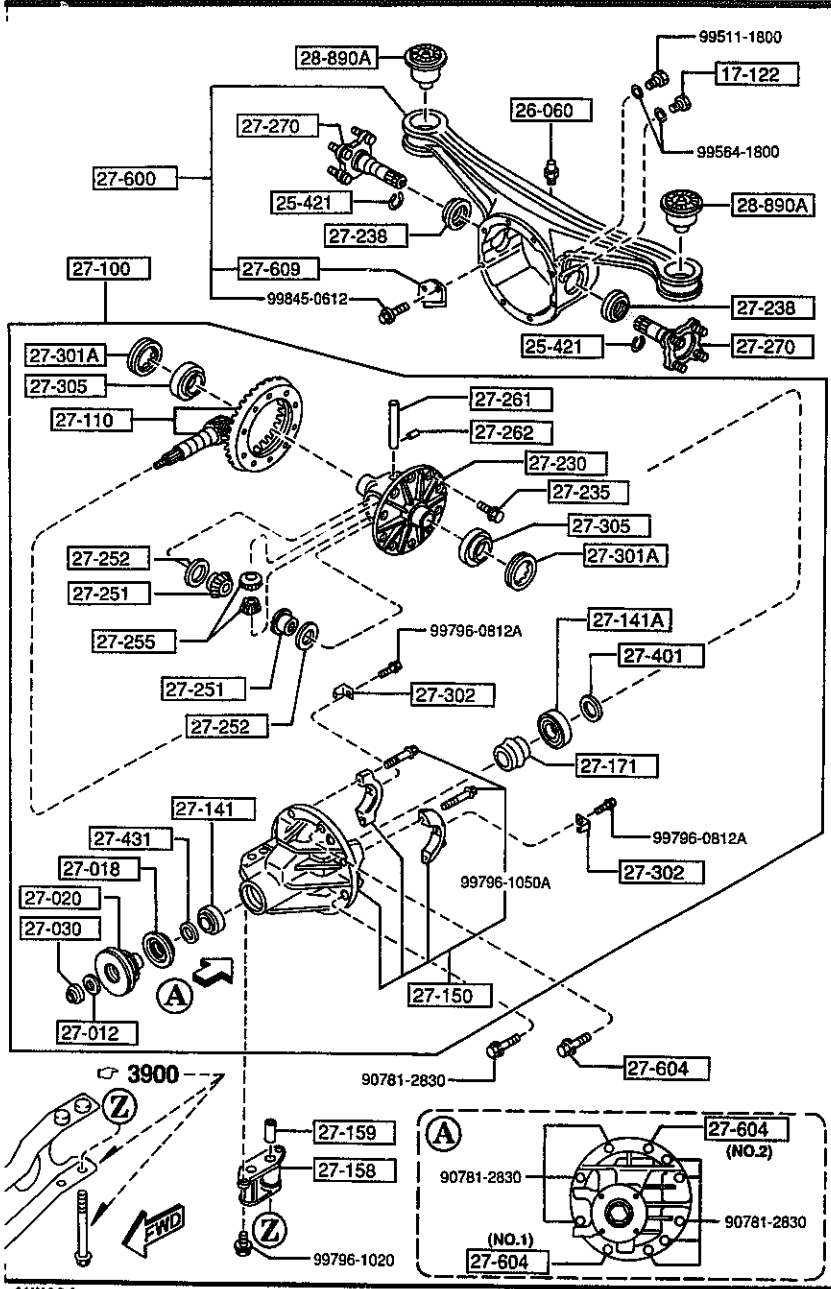
AUNA04

CAT. AUNA04-03

1995-04

2710 REAR DIFFERENTIALS
(NORMAL DIFF.)

2710 -4 * REAR DIFFERENTIALS
(NORMAL DIFF.)



PART NO.	QTY	MODEL/RESTRICTION	MODEL/RESTRICTION	MODEL/RESTRICTION	FROM-TO
27-431		SPACER			
PA01-27-431	1				
27-600		CASING, DIFFERENTIAL			
MA02-27-600	1				
27-604		BOLT, CARRIER			
M053-27-604	1	(ILLUST. NO.1)			
M053-27-605	1	(ILLUST. NO.2)			
27-609		PLATE, BAFFLE-DIFF CASING			
MOA1-27-609A	1				
28-890A		RUBBER, SUB FRAME MTG			
NA01-28-890	2				

AUNA04

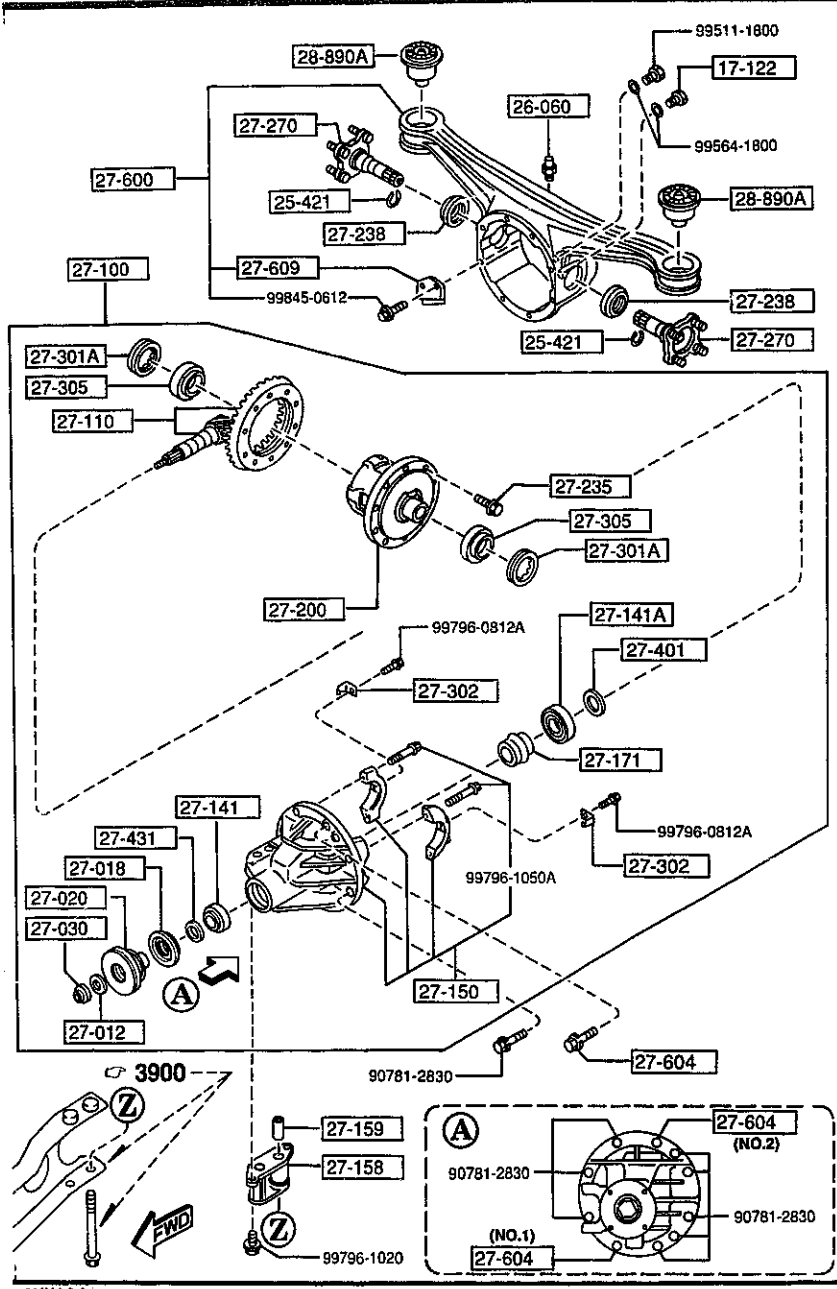
CAT. AUNA04-03

1995-04

1-K11

2710 A REAR DIFFERENTIALS
(LIMITED SLIP DIFF.)

2710 A-1 REAR DIFFERENTIALS
(LIMITED SLIP DIFF.)



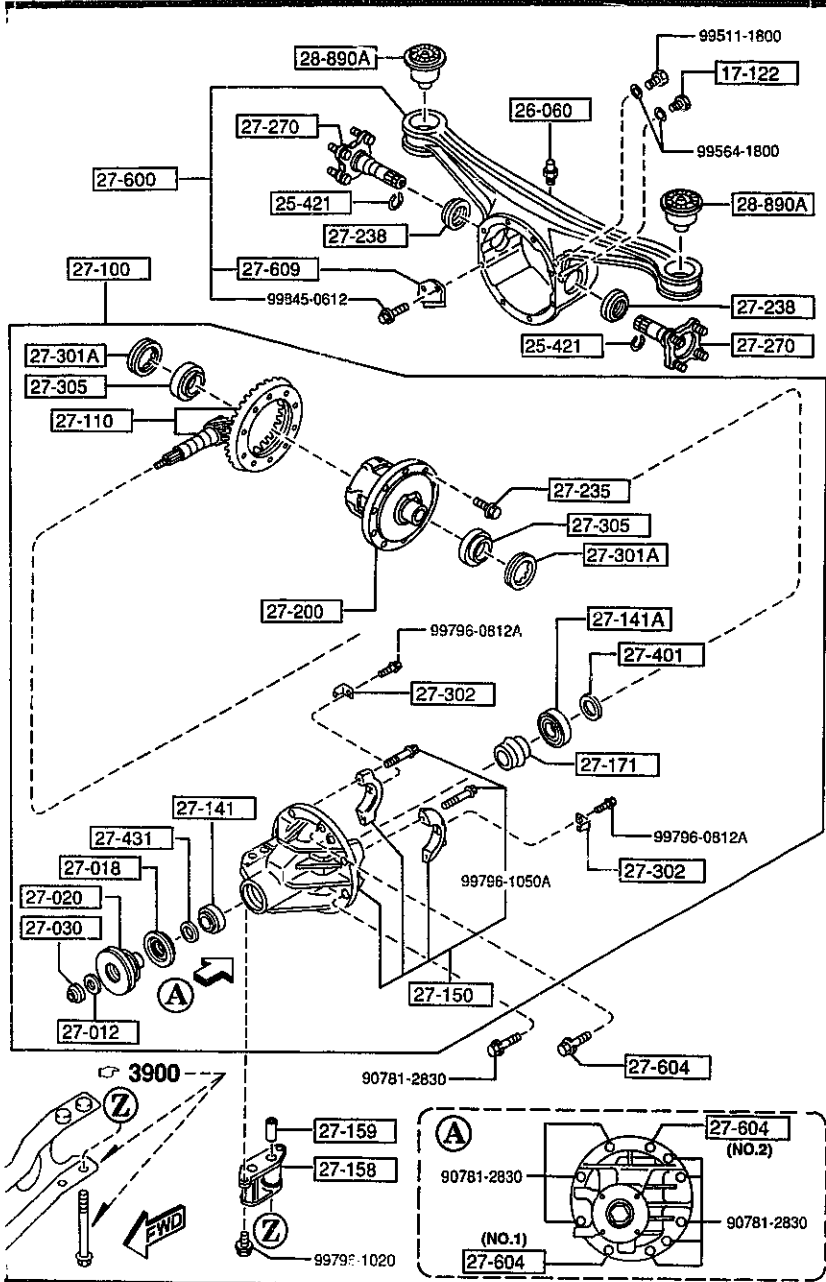
PART NO.	QTY	MODEL/RESTRICTION	MODEL/RESTRICTION	MODEL/RESTRICTION	FROM-TO
17-122		PLUG, MAGNET			
0810-17-121	1				
25-421		CLIP			
6003-25-421	2				
26-060		BREATHER			
0730-26-060	1				
27-012		WASHER			
0223-27-012	1				
27-018		SEAL, OIL			
M054-27-165	1				-3901
MA02-27-165	1				3901-
27-020		FLANGE, COMPANION			
MA03-27-120	1				
27-030		NUT, LOCK			
0223-27-030	1				
27-100		DRIVING & DIFF.			
MM01-27-100	1				-3901
A (MM01-27-100A)					
MM01-27-100A	1				3901-
27-110		GEAR SET, FINAL			
M068-27-110A	1	R=4.100			
27-141		BEARING, PINION			
0755-27-210	1				
27-141A		BEARING, PINION			
M025-27-210	1				
27-150		CARRIER, DIFFERENTIAL			
MA02-27-150	1				
27-158		SPACE			
3901 NA3***-502360					

AUNA04

CAT. AUNA04-03

1995-04

2710 A REAR DIFFERENTIALS
(LIMITED SLIP DIFF.)



AUNA04

2710 A-2 REAR DIFFERENTIALS
(LIMITED SLIP DIFF.)

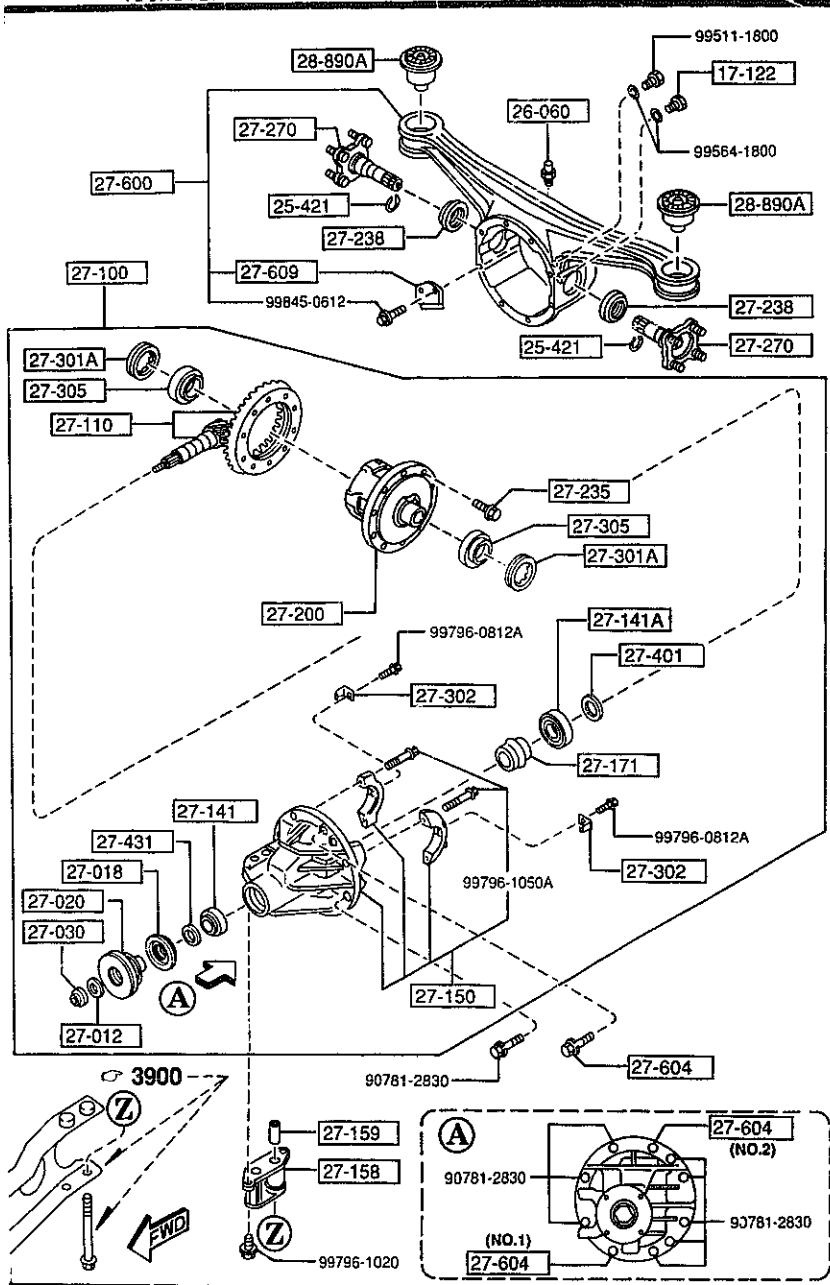
PART NO.	QTY	MODEL/RESTRICTION	MODEL/RESTRICTION	MODEL/RESTRICTION	FROM-TO
CONT'D					
T020-27-158A	1				
+-----+ 27-159 +-----+		PIN, TUBULAR			
T020-27-159A	1				
+-----+ 27-171 +-----+		PIECE, DISTANCE			
M035-27-171	1				
+-----+ 27-200 +-----+		DIFFERENTIAL			
MM01-27-200	1				
+-----+ 27-235 +-----+		BOLT, RING GEAR			
8051-27-235	10	D=10MM			
8051-27-236	10	D=10.2MM			
+-----+ 27-238 +-----+		SEAL, OIL			
M0A1-27-238	2				-3901
MA02-27-238	2				3901-
+-----+ 27-270 +-----+		YOKE, DIFFERENTIAL			
M055-27-270C	2				
+-----+ 27-301A +-----+		SCREW, ADJUST			
0290-27-301	2				
+-----+ 27-302 +-----+		PLATE, LOCK			
0290-27-302	2				
+-----+ 27-305 +-----+		BEARING			
0221-27-350	2				
+-----+ 27-401 +-----+		SPACER			
0223-27-401A	1	T=3.08MM			
0223-27-402A	1	T=3.11MM			
0223-27-403A	1	T=3.14MM			
0223-27-404A	1	T=3.17MM			
3901 NA3***-502360					

CAT. AUNA04-03

1995-04

2710 A REAR DIFFERENTIALS
(LIMITED SLIP DIFF.)

2710 A-3 * REAR DIFFERENTIALS
(LIMITED SLIP DIFF.)



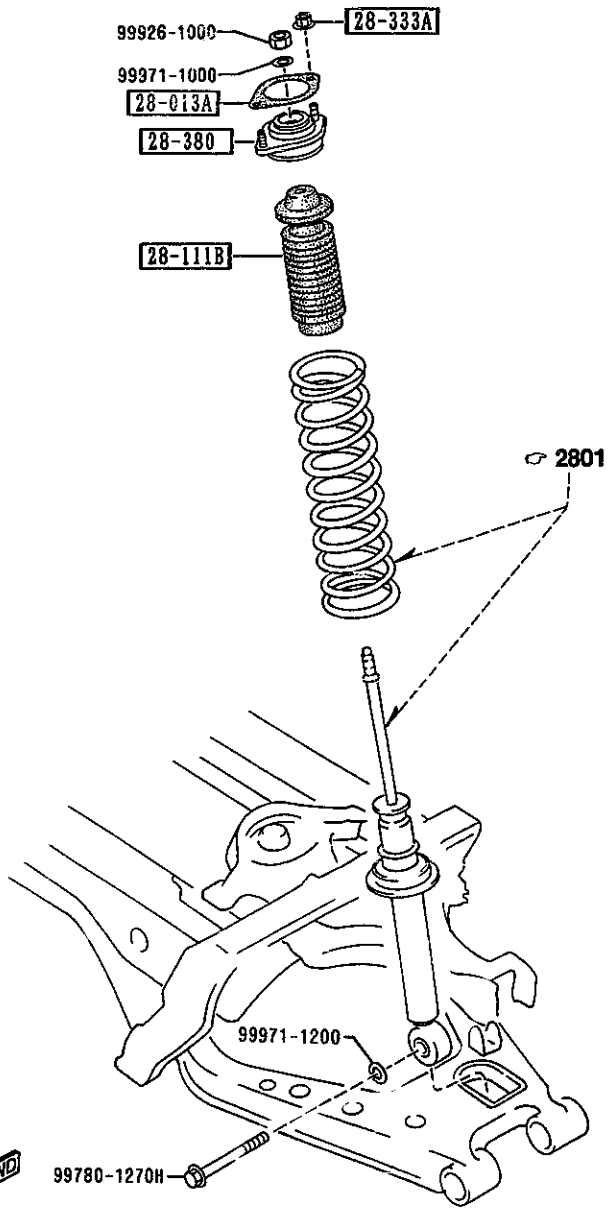
PART NO.	QTY	MODEL/RESTRICTION	MODEL/RESTRICTION	MODEL/RESTRICTION	FROM-TO
CONT'D					
0223-27-405A	1	T=3.2MM			
0223-27-406A	1	T=3.23MM			
0223-27-407A	1	T=3.26MM			
0223-27-408A	1	T=3.29MM			
0223-27-409A	1	T=3.32MM			
0223-27-411A	1	T=3.35MM			
0223-27-412A	1	T=3.38MM			
0223-27-413A	1	T=3.41MM			
0223-27-414A	1	T=3.44MM			
0223-27-415A	1	T=3.47MM			
27-431		SPACER			
PA01-27-431	1				
27-600		CASING, DIFFERENTIAL			
MA02-27-600	1				
27-604		BOLT, CARRIER			
M053-27-604	1	(ILLUST. NO.1)			
M053-27-605	1	(ILLUST. NO.2)			
27-609		PLATE, BAFFLE-DIFF CASING			
MOA1-27-609A	1				
28-890A		RUBBER, SUB FRAME MTG			
NA01-28-890	2				

CAT. AUNA04-03

1995-04

2800 REAR SUSPENSION MECHANISMS

2800 -1 * REAR SUSPENSION MECHANISMS



PART NO.	QTY	MODEL/RESTRICTION	MODEL/RESTRICTION	MODEL/RESTRICTION	FROM-TO
28-013A		SHEET, RUBBER			
G030-28-013A	2				
28-111B		STOPPER, BUMP			
NA01-28-111	2 (EXC. BILSTEIN DAMP.)				
N021-34-111	2 (BILSTEIN DAMP.)				
28-333A		NUT, FLANGE			
H001-28-333	4				
28-380		RUBBER, MOUNTING			
NA01-28-380B	2				

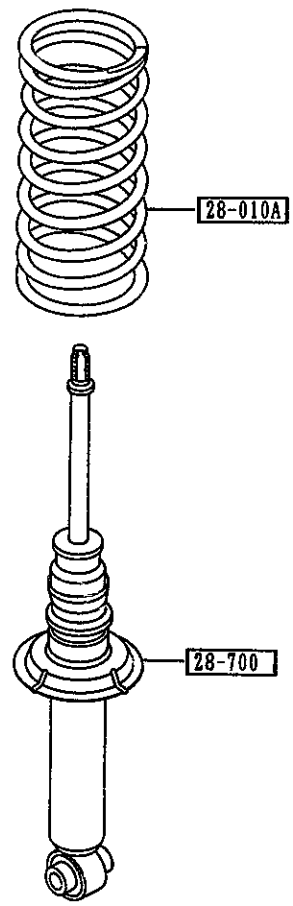
AUNA04

CAT. AUNA04-03

1995-04

2801 REAR SPRING & DAMPER

2801 -1 * REAR SPRING & DAMPER



PART NO.	QTY	MODEL/RESTRICTION	MODEL/RESTRICTION	MODEL/RESTRICTION	FROM-TO
+-----+ 28-010A +-----+					
NA01-28-011C	2	((MT)>(EXC.BILSTEIN DAMP.))			
NA03-28-011A	2	(AT)			
N021-28-011	2	((MT)>(BILSTEIN DAMP .))			
+-----+ 28-700 +-----+					
N023-28-700A	2	(BILSTEIN DAMP.)			
N018-28-700A AN(N018-28-700B)	2				-3914
N018-28-700B	2	(EXC.BILSTEIN DAMP.)			3914-
3914 NA3***-503535					



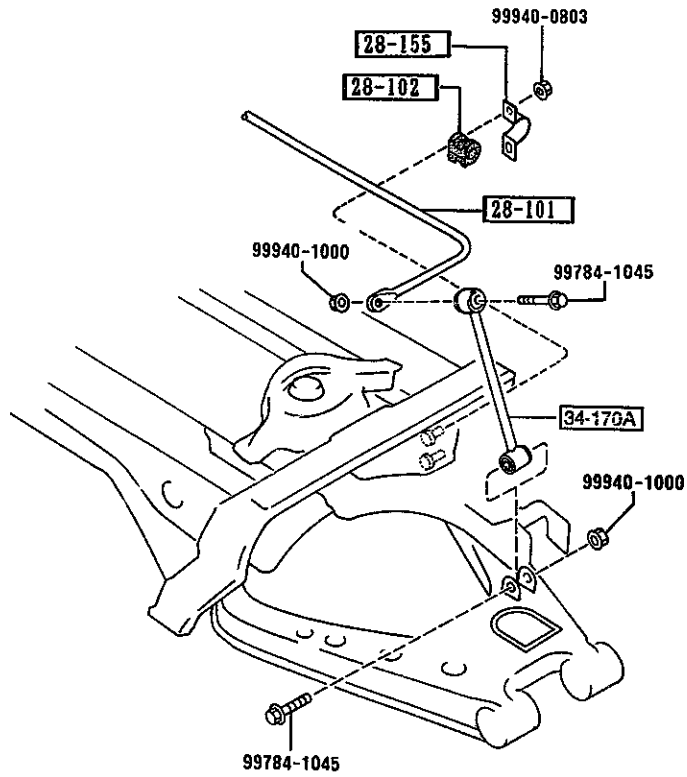
AUNA04

CAT. AUNA04-03

1995-04

2810 -1 * REAR STABILIZER

2810 REAR STABILIZER



PART NO.	QTY	MODEL/RESTRICTION	MODEL/RESTRICTION	MODEL/RESTRICTION	FROM-TO
28-101		STABILIZER,RR			
N023-28-151	1				
28-102		BUSH,STABILIZER-RR			
N023-28-156	2				
28-155		PLATE,STABILIZER-RR			
FB01-28-155	2				
34-170A		LINK,CONTROL-STAB			
NA01-34-170	2				

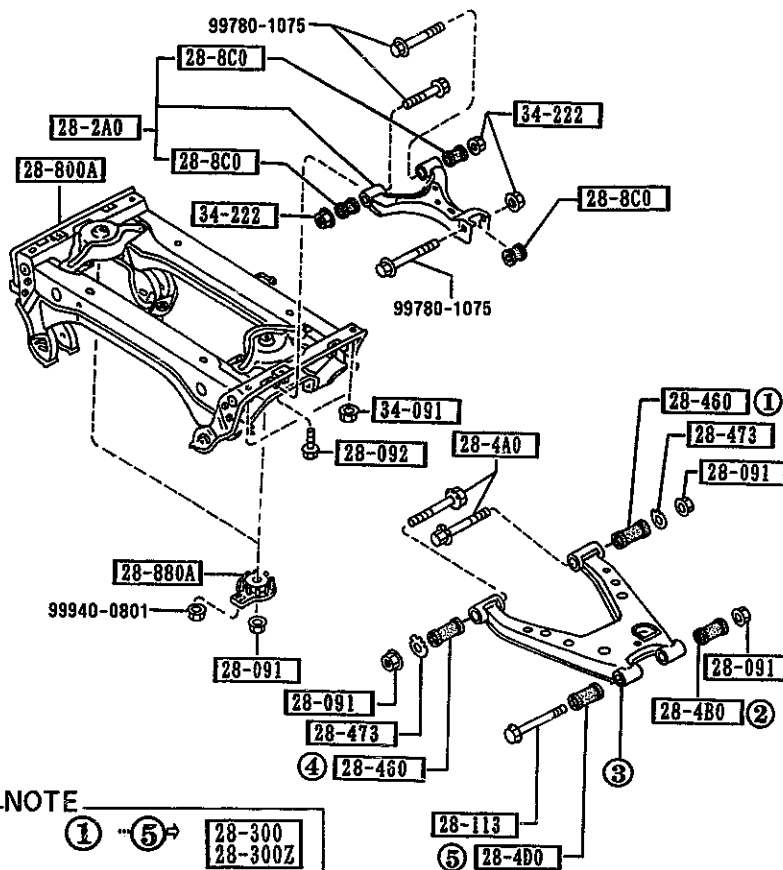
AUNA04

CAT. AUNA04-03

1995-04

2830 REAR LOWER ARMS & SUB FRAME

2830 -1 REAR LOWER ARMS & SUB FRAME



NOTE

① ⑤ → 28-300
28-300Z

THE D-CODE OF 28-300
28-300Z CONSISTS OF
FIGURE NUMBERS ① THROUGH ⑤.

PART NO.	QTY	MODEL/RESTRICTION	MODEL/RESTRICTION	MODEL/RESTRICTION	FROM-TO
28-091		NUT			
B037-28-091	8				
28-092		BOLT, CONTROL LINK			
NA01-28-092	2				
28-113		BOLT			
NA01-28-113	2				
28-2A0		ARM, UPPER-REAR			
NA01-28-2A0B	2				
28-300		ARM(R), LOWER-REAR			
NA01-28-300	1				
28-300Z		ARM(L), LOWER-REAR			
NA01-28-350	1				
28-4A0		BOLT, ADJUST			
NA01-28-4A0	4				
28-4B0		BUSHING, RUBBER-LOWER ARM			
NA01-28-4B0	2				
28-4D0		BUSHING, RUBBER-LOWER ARM			
NA01-28-4D0	2				
28-460		BUSHING, LOWER ARM			
NA01-28-460	4				
28-473		PLATE, CAM-SUB FRAME			
NA01-28-473	4				
28-8C0		BUSHING, RUBBER			
NA01-28-8C0B	6				
28-800A		MEMBER, CROSS			
NA75-28-800	1				
28-880A		WASHER, STOP			
NA01-28-880B	2				

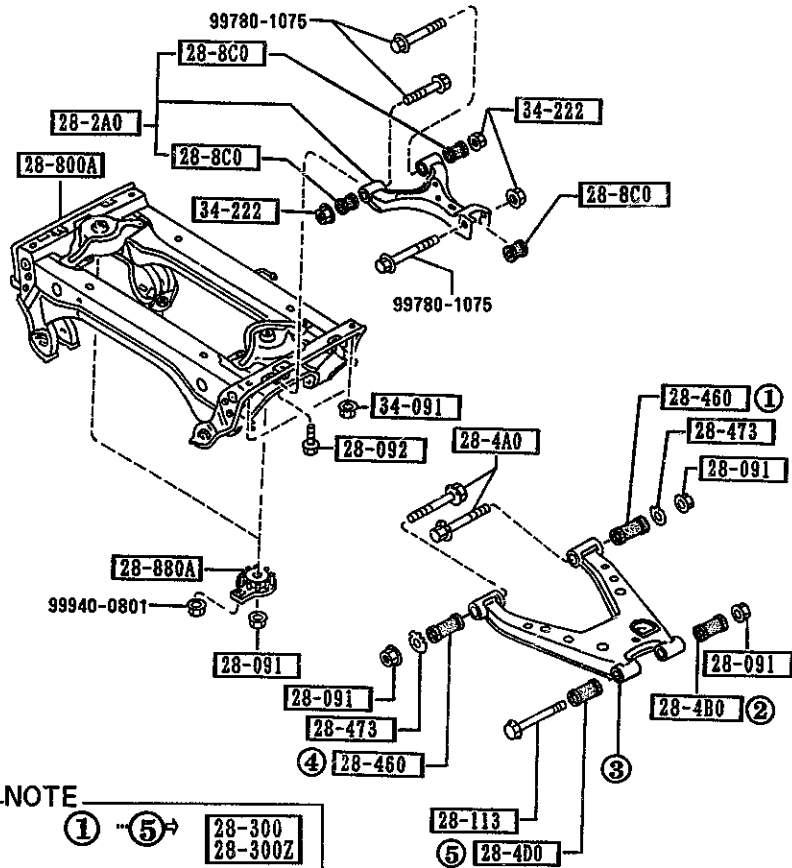
AUNA04

CAT. AUNA04-03

1995-04

2830 REAR LOWER ARMS & SUB FRAME

2830 -2 * REAR LOWER ARMS & SUB FRAME



NOTE
 ① ⑤ → 28-300
 28-300Z
 THE D-CODE OF 28-300
 28-300Z CONSISTS OF
 FIGURE NUMBERS ① THROUGH ⑤.



AUNA04

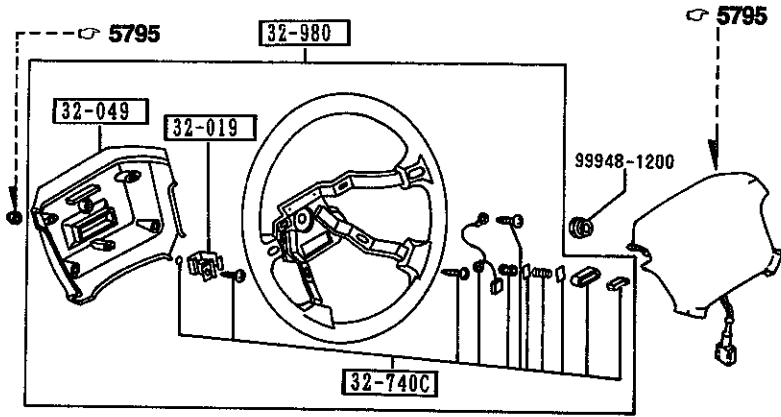
CAT. AUNA04-05

1995-04

PART NO.	QTY	MODEL/RESTRICTION	MODEL/RESTRICTION	MODEL/RESTRICTION	FROM-TO
34-091		NUT			
FB01-34-091	4				
34-222		NUT			
8871-34-222	6				

3200 STEERING WHEEL

3200 -1 * STEERING WHEEL



PART NO.	QTY	MODEL/RESTRICTION	MODEL/RESTRICTION	MODEL/RESTRICTION	FROM-TO
32-019		BRACKET, COUPLER			
NA01-32-019	1				
32-049		COVER, WHEEL CORE			
NA01-32-049	1				
32-740C		PARTS SET, ST. WHEEL			
NA01-32-750	1				
32-980		BOSS, STEERING WHEEL			
NA01-32-980C	1	BASE, (URETHANE WHEEL)			
NA02-32-980C	1	PKG-A, PKG-B, PKG-C, RICO-OPT-PKG, (LEATHER WHEEL)			

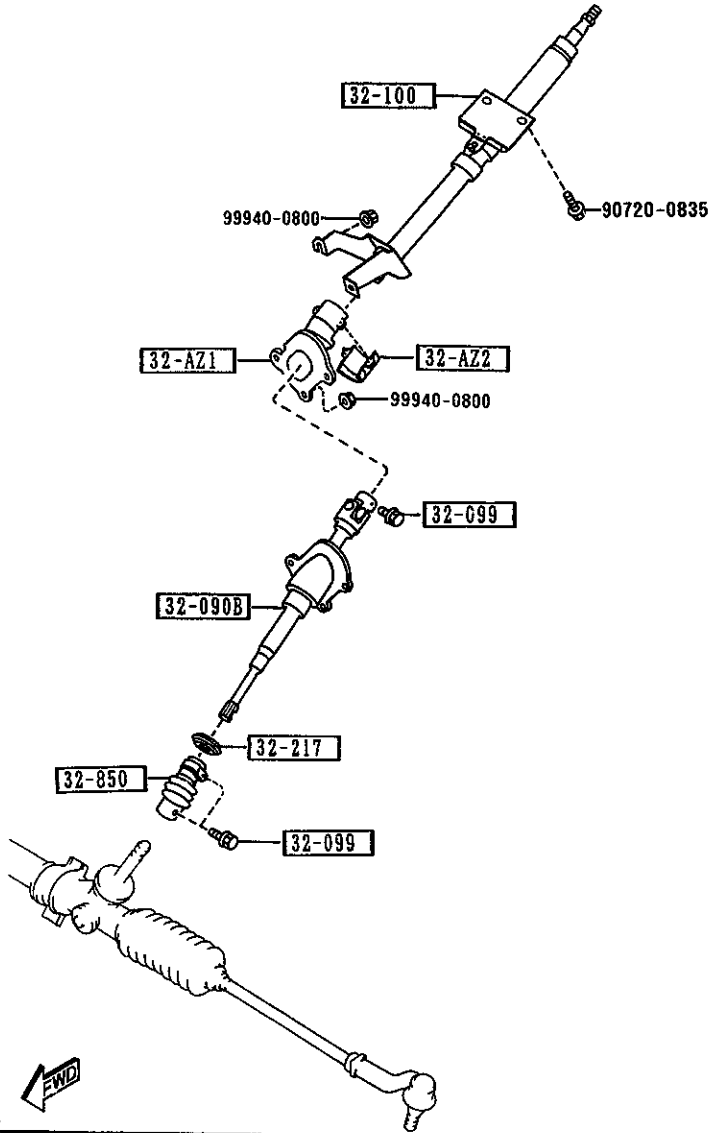
AUNA04

CAT. AUNA04-03

1995-04

3210 STEERING COLUMN & SHAFTS

3210 -1 * STEERING COLUMN & SHAFTS



PART NO.	QTY	MODEL/RESTRICTION	MODEL/RESTRICTION	MODEL/RESTRICTION	FRON-TO
32-AZ1		COVER,JOINT-UPPER			
NA75-32-AZ1	1				
32-AZ2		COVER,JOINT-LOWER			
NA01-32-AZ2A	1				
32-090B		SHAFT,INTERMED.			
NA01-32-090C	1	BASE, (W/O POWER STEERING)			
NA02-32-090C	1	PKG-A, PKG-B, PKG-C, RICO-OPT-PKG, (W/POWER STEERING)			
32-099		BOLT,SHAFT			
B455-32-099	3				
32-100		SHAFT,ENGY.ABSORBER			
NA75-32-100 A (NA75-32-100A)	1				-3C01
NA75-32-100A	1				3C01-
32-217		GROMMET			
NA01-32-217	1				
32-850		JOINT,STEERING			
NA01-32-850A	1				
3C01 NA3***-507607					

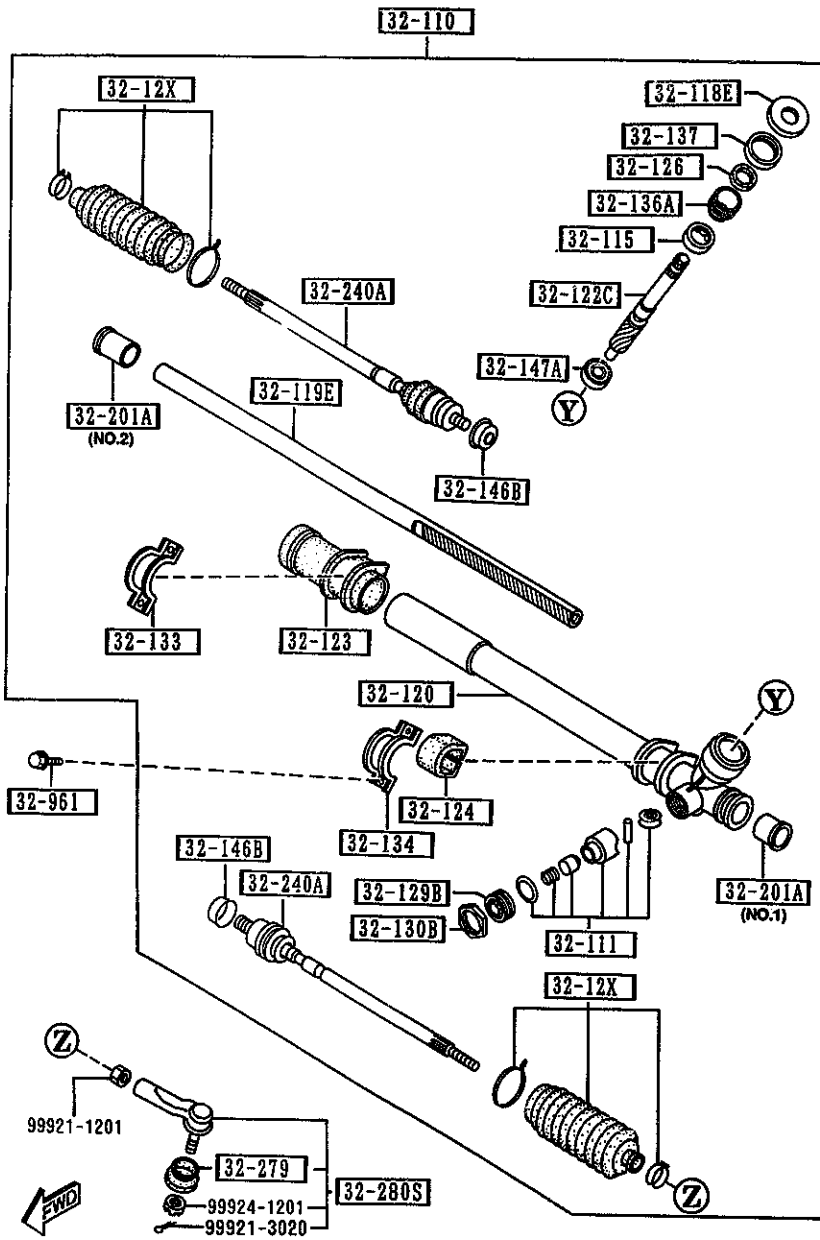
AUNA04

CAT. AUNA04-03

1995-04

3220 STEERING GEAR
(W/O POWER STEERING)

3220 -1 STEERING GEAR
(W/D POWER STEERING)



PART NO.	QTY	MODEL/RESTRICTION	MODEL/RESTRICTION	MODEL/RESTRICTION	FROM-TO
32-110		GEAR, STEERING			
NA01-32-110	1				
32-111		YOKE, SUPPORT			
GJ21-32-111	1				
32-115		BEARING, ST. GEAR			
G030-32-115	1				
32-118E		COVER, DUST-ST. GEAR			
NA01-32-118	1				
32-119E		RACK, STEERING GEAR			
NA01-32-119	1				
32-12X		BOOT SET, ST. GEAR			
NA01-32-12X	2				
32-120		HOUSING, GEAR			
NA01-32-120	1				
32-122C		PINION, STEERING GEAR			
NA01-32-122	1				
32-123		RUBBER, MOUNTING			
NA01-32-123	1				
32-124		RUBBER, MOUNTING			
NA01-32-124	1				
32-126		SEAL, SHAFT			
G030-32-126	1				
32-129B		PLUG, PINION			
HE01-32-129	1				
32-130B		NUT, LOCK			
S083-32-137	1				
32-133		PLATE, CLAMP			
BC51-32-133	1				

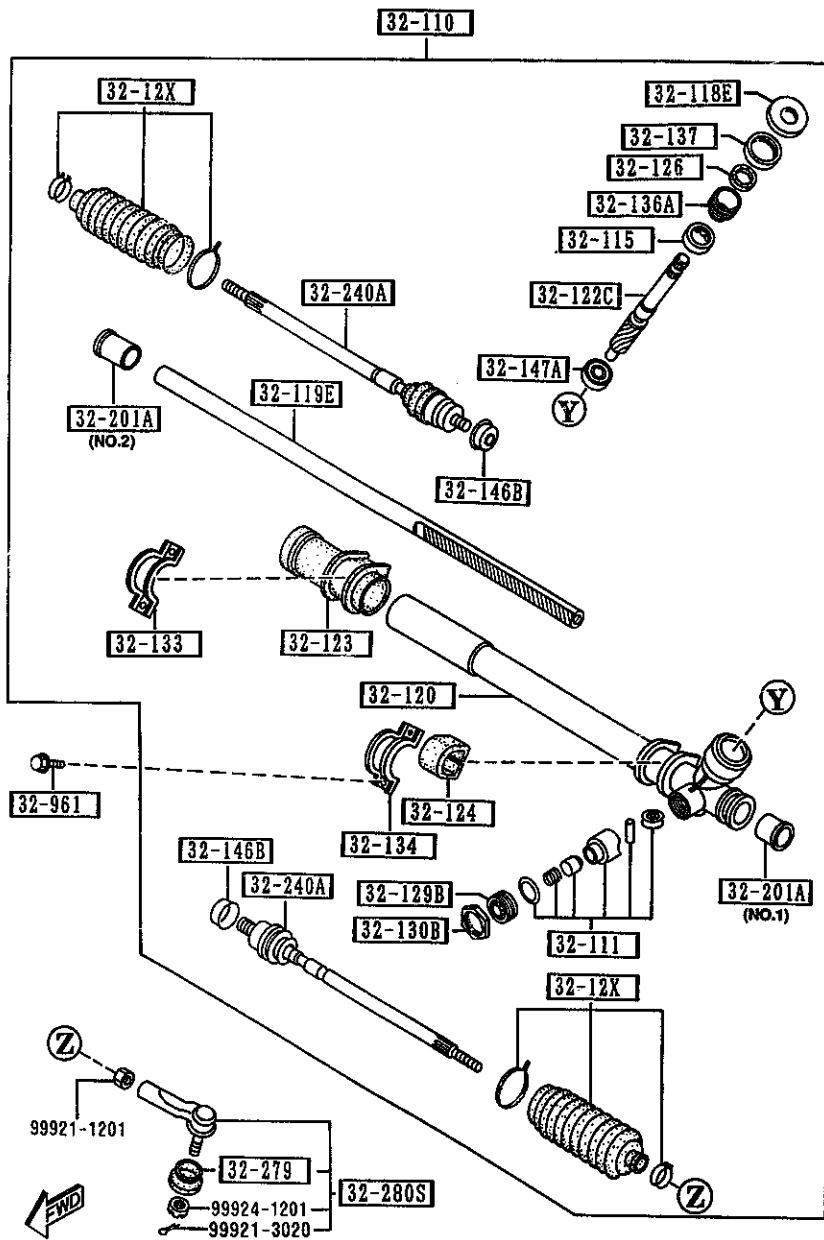
AUNA04

CAT. AUNA04-03

1995-04

3220 STEERING GEAR
(W/O POWER STEERING)

3220 -2 * STEERING GEAR
(W/O POWER STEERING)



PART NO.	QTY	MODEL/RESTRICTION	MODEL/RESTRICTION	MODEL/RESTRICTION	FROM-TO
32-134		PLATE, CLAMP			
NA01-32-134	1				
32-136A		COVER, REAR			
G030-32-136	1				
32-137		NUT, LOCK			
S030-32-137	1				
32-146B		WASHER			
HA14-32-146	2				
32-147A		BEARING, PINION			
G030-32-147	1				
32-201A		BUSHING, RACK-ST. GEAR			
HE01-32-201	1	(ILLUST. NO. 1)			
HE09-32-201	1	(ILLUST. NO. 2)			
32-240A		JOINT, BALL			
NA01-32-240	2				
32-279		SEAL, DUST-BALL JOINT			
B455-32-279	2				
32-280S		JOINT SET, BALL			
8AN1-32-280	2	(EXC. BILSTEIN DAMP.)			
8AN2-32-280	2	(BILSTEIN DAMP.)			
32-961		BOLT			
G030-32-961	4				

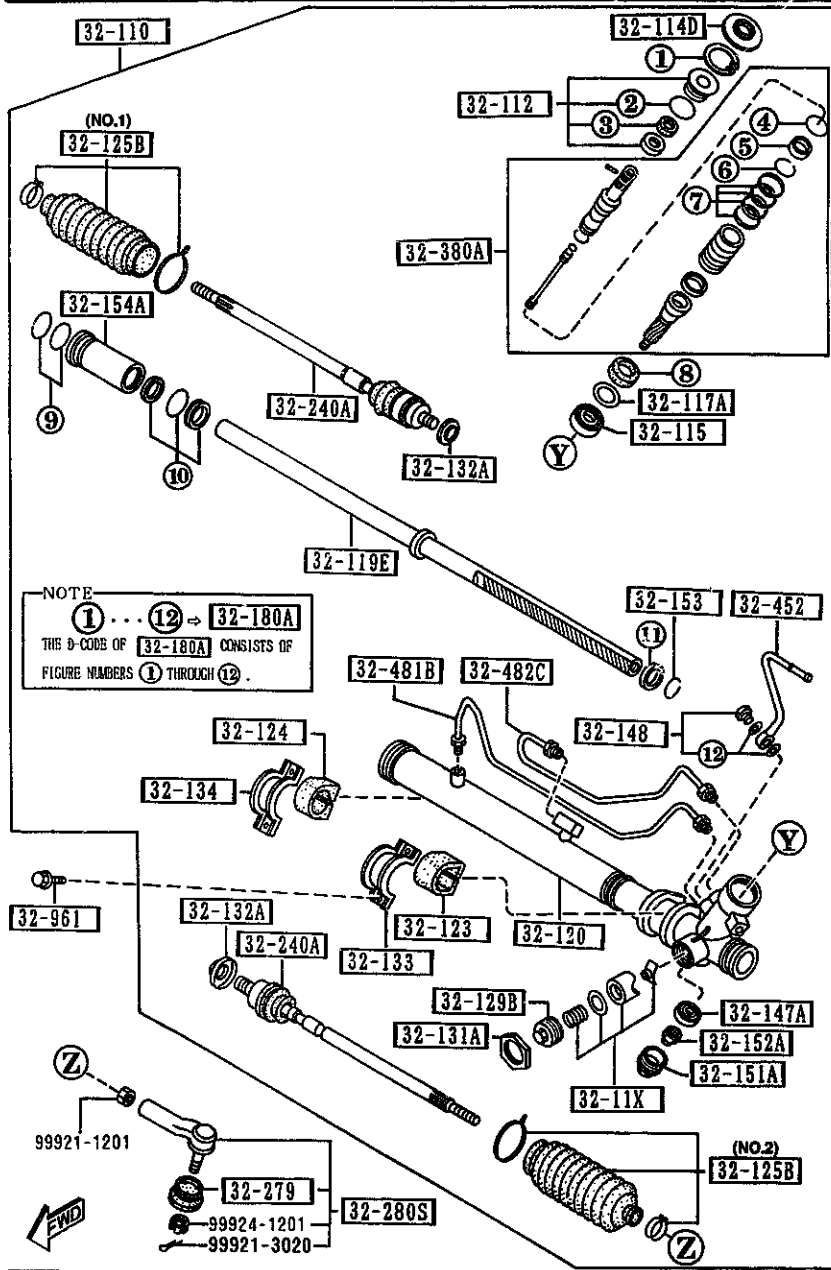
AUNA04

CAT. AUNA04-03

1995-04

1-K12

3220 A STEERING GEAR
(W/ POWER STEERING)



3220 A-1 STEERING GEAR
(W/ POWER STEERING)

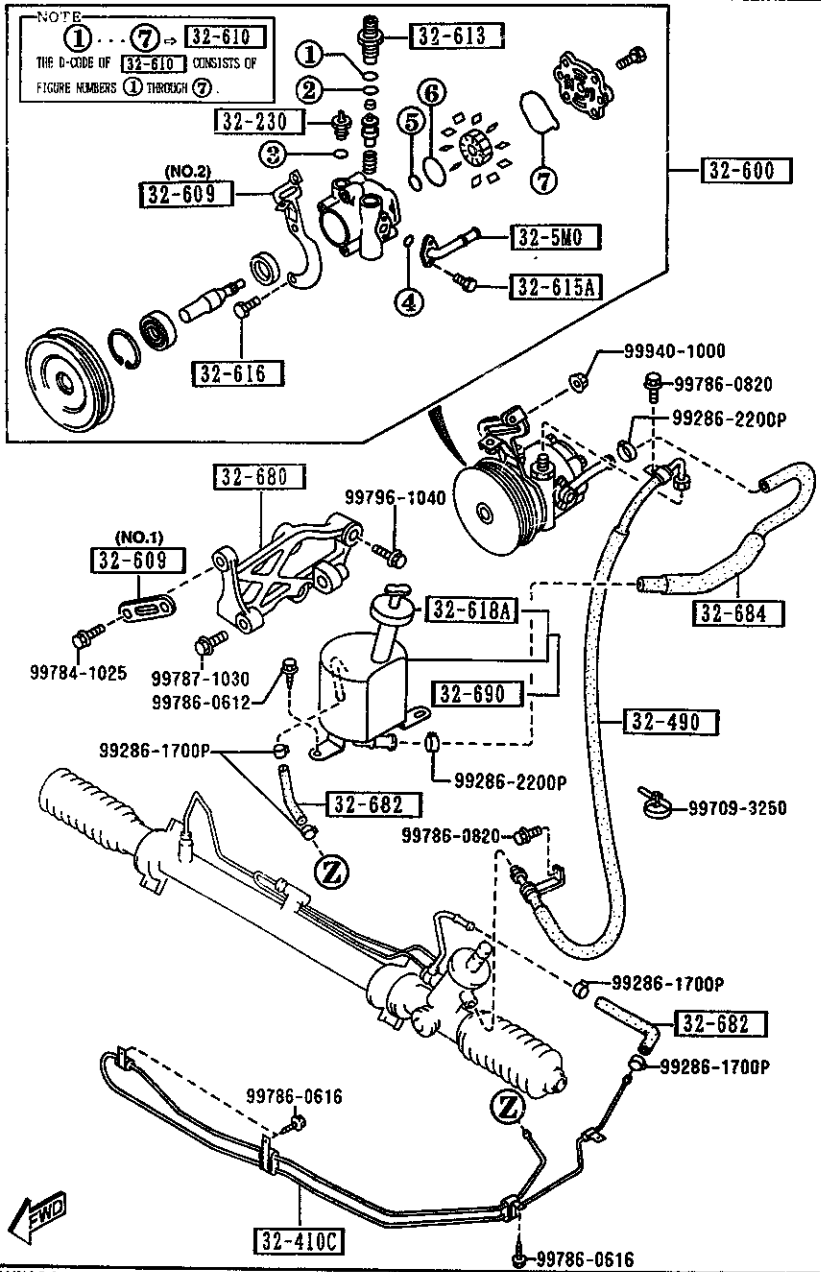
PART NO.	QTY	MODEL/RESTRICTION	MODEL/RESTRICTION	MODEL/RESTRICTION	FROM-TO
32-11X		YOKE SET, SUPPORT-ST. GEAR			
NA02-32-11X	1				
32-110		GEAR, STEERING			
NA02-32-110	1				
32-112		COVER, DUST			
NA02-32-112	1				
32-114D		COVER, DUST-ST. GEAR			
NA02-32-114	1				
32-115		BEARING, ST. GEAR			
NA02-32-115	1				
32-117A		SPACER, STEERING GEAR			
NA02-32-121	1				
32-119E		RACK, STEERING GEAR			
NA02-32-119	1				
32-120		HOUSING, GEAR			
NA02-32-120	1				
32-123		RUBBER, MOUNTING			
NA02-32-123	1				
32-124		RUBBER, MOUNTING			
NA02-32-124	1				
32-125B		BOOT, RACK			
NA02-32-125	1 (ILLUST. NO. 1)				
NA02-32-135	1 (ILLUST. NO. 2)				
32-129B		PLUG, PINION			
NA02-32-129	1				
32-131A		NUT, LOCK-RACK			
NA02-32-131	1				

AUNA04

CAT. AUNA04-03

1995-04

3240 POWER STEERING SYSTEM



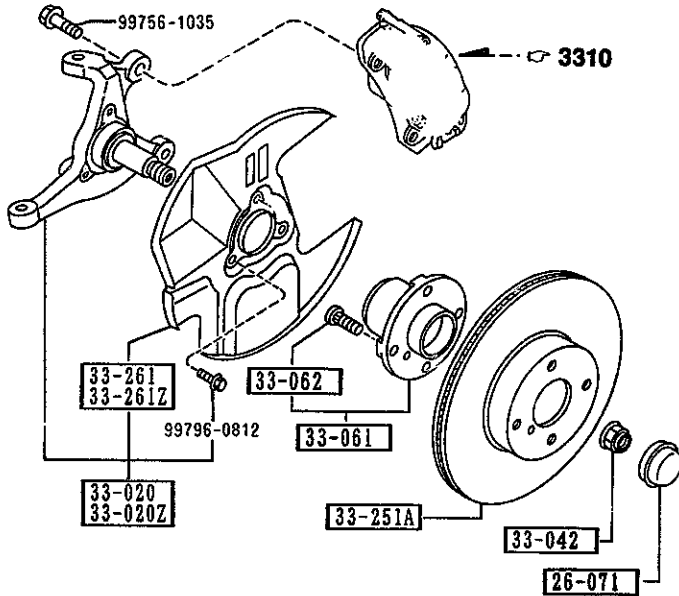
PART NO.	QTY	MODEL/RESTRICTION	MODEL/RESTRICTION	MODEL/RESTRICTION	FROM-TO
32-684		HOSE, RETURN			
NA02-32-684B	1				
32-690		TANK, VANE PUMP			
NA02-32-690A	1				

AUNA04

CAT. AUNA04-03

1995-04

3300 FRONT AXLE
(W/O ANTI LOCK BRAKE SYSTEM)



3300 -1 * FRONT AXLE
(W/O ANTI LOCK BRAKE SYSTEM)

PART NO.	QTY	MODEL/RESTRICTION	MODEL/RESTRICTION	MODEL/RESTRICTION	FROM-TO
26-071		CAP,HUB			
B455-26-071	2				
33-020		KNUCKLE(R),STEERING			
NA01-33-020A	1				
33-020Z		KNUCKLE(L),STEERING			
NA01-33-030A	1				
33-042		NUT			
NA01-33-042B		W/WASHER			-4126
AN(D06Y-33-042)	2				
D06Y-33-042	2	W/WASHER			4126-
33-061		HUB,WHEEL			
NA01-33-04X	2				
33-062		BOLT,HUB			
B455-33-062	8				
33-251A		PLATE,DISC			
NA75-33-25X	2				
33-261		COVER(R),DUST			
NA75-33-261	1				
33-261Z		COVER(L),DUST			
NA75-33-271	1				
4126 NA3***-511068					



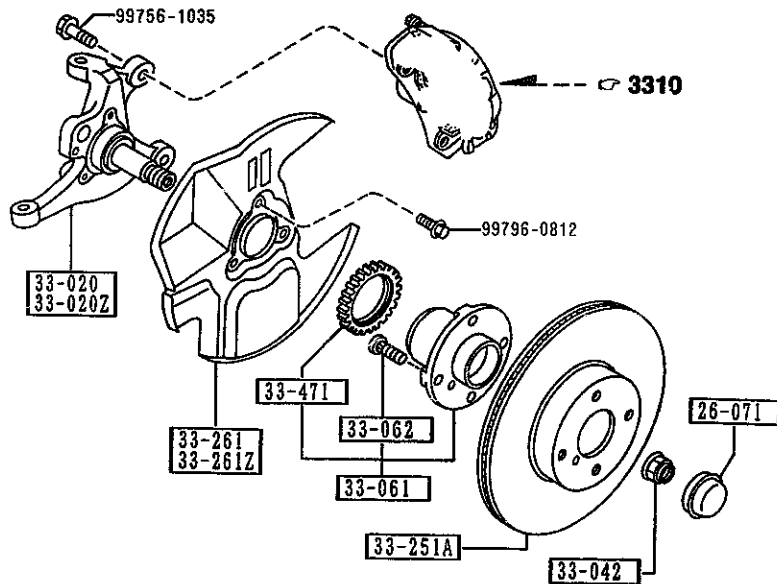
AUNA04

CAT. AUNA04-03

1995-04

3300 A FRONT AXLE
(ANTI LOCK BRAKE SYSTEM)

3300 A-1 * FRONT AXLE
(ANTI LOCK BRAKE SYSTEM)



PART NO.	QTY	MODEL/RESTRICTION	MODEL/RESTRICTION	MODEL/RESTRICTION	FROM-TO
26-071		CAP, HUB			
B455-26-071	2				
33-020		KNUCKLE(R), STEERING			
NA23-33-021A	1				
33-020Z		KNUCKLE(L), STEERING			
NA23-33-031A	1				
33-042		NUT			
NA01-33-042B AND(D06Y-33-042)	2	W/WASHER			-4126
D06Y-33-042	2	W/WASHER			4126-
33-061		HUB, WHEEL			
NA23-33-04XA	2				
33-062		BOLT, HUB			
B455-33-062	8				
33-251A		PLATE, DISC			
NA75-33-25X	2				
33-261		COVER(R), DUST			
NA75-33-261	1				
33-261Z		COVER(L), DUST			
NA75-33-271	1				
33-471		ROTOR, SENSOR-FRT A. B .S.			
NA23-33-471B	2				

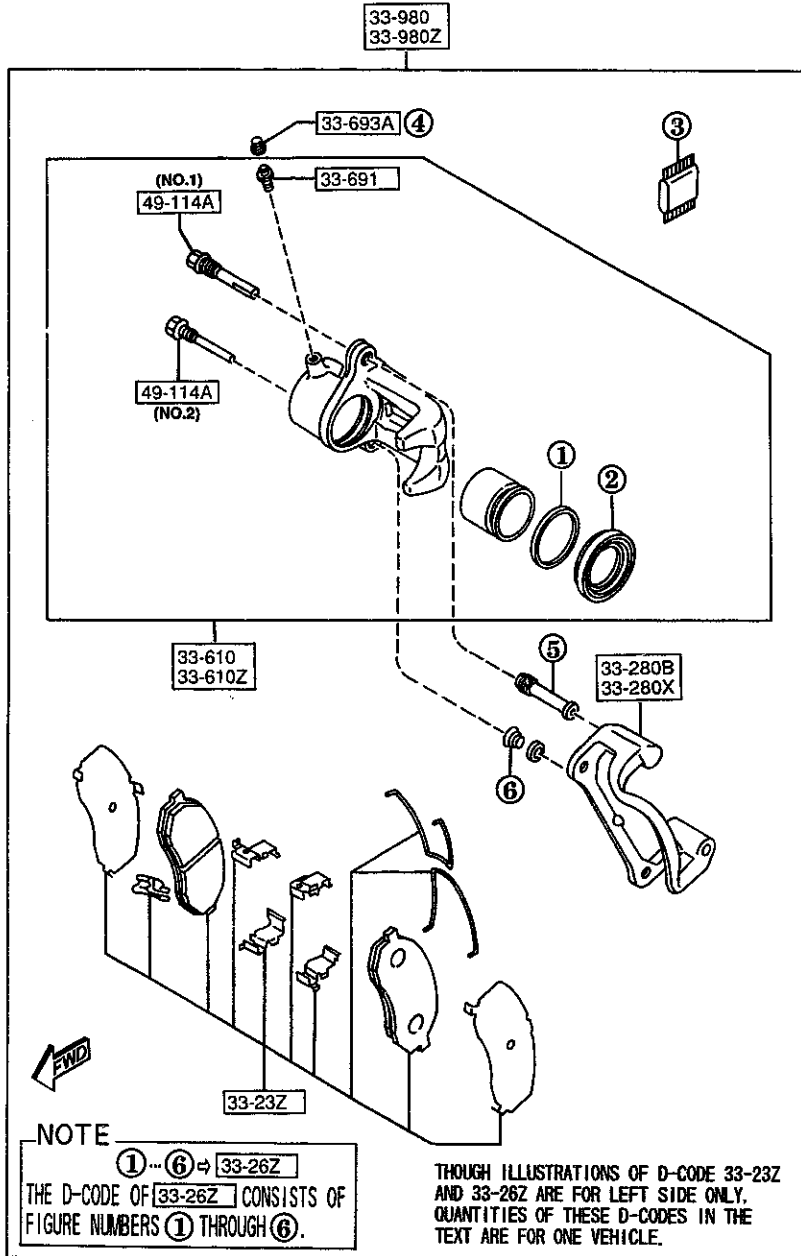
4126 NA3***-511068



AUNA04

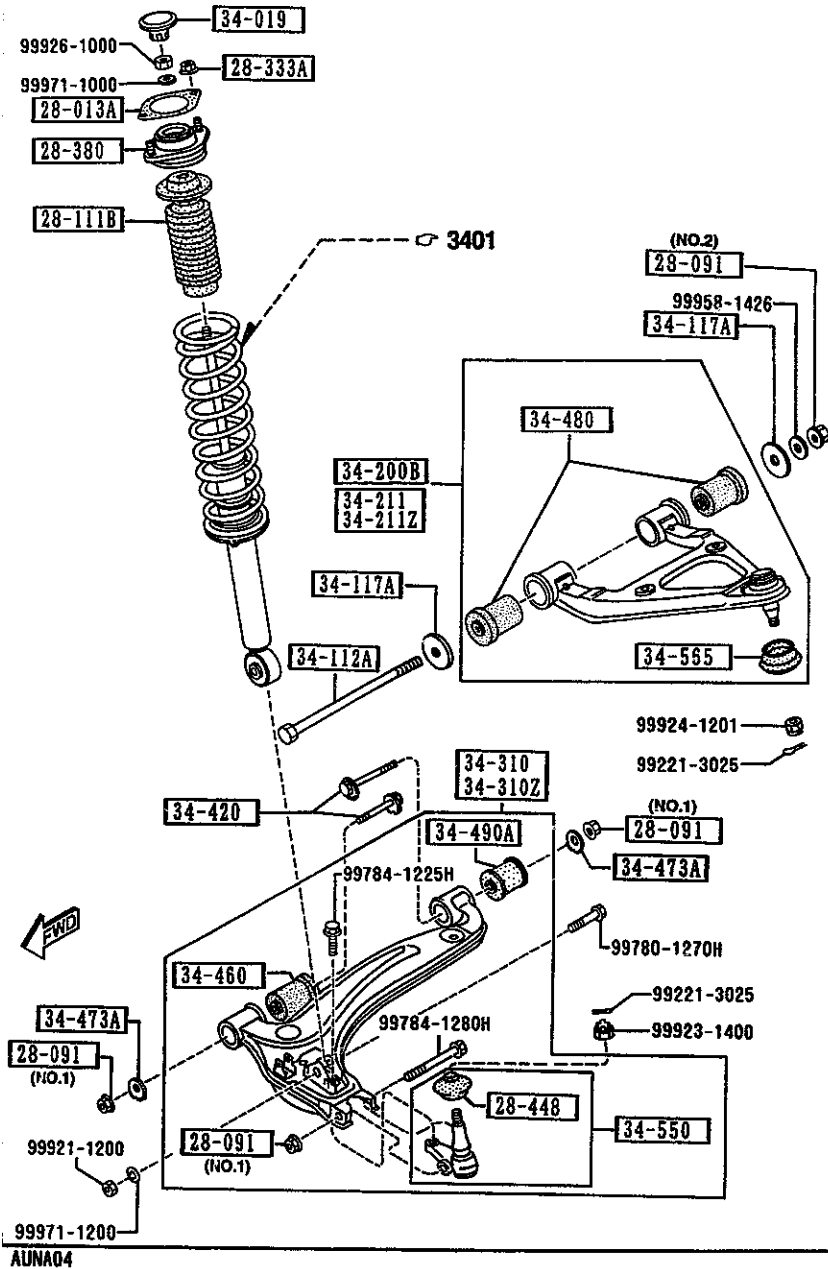
CAT. AUNA04-03

1995-04



PART NO.	QTY	MODEL/RESTRICTION	MODEL/RESTRICTION	MODEL/RESTRICTION	FROM-TO
33-23Z		PAD SET, FRT CALIPER			
NA75-33-23Z	1				
33-26Z		SEAL & BOOT SET, CAL. -FRT			
NA75-33-26Z	1				
33-280B		SUPPORT(R), MOUNTING			
NA75-33-281	1				
33-280X		SUPPORT(L), MOUNTING			
NA75-33-291	1				
33-610		BODY & PISTON(R), CALIPER			
NA75-33-61X	1				
33-610Z		BODY & PISTON(L), CALIPER			
NA75-33-71X	1				
33-691		SCREW, BLEEDER			
B001-33-691	2				
33-693A		CAP, BLEEDER SCREW			
0259-33-693	2				
33-980		CALIPER(R), FRT BRAKE			
NA75-33-980	1				
33-980Z		CALIPER(L), FRT BRAKE			
NA75-33-990	1				
49-114A		PIN, SLIDER			
173-49-114	2	(ILLUST. NO.1)			
8239-49-114	2	(ILLUST. NO.2)			

3400 FRONT SUSPENSION MECHANISMS



AUNA04

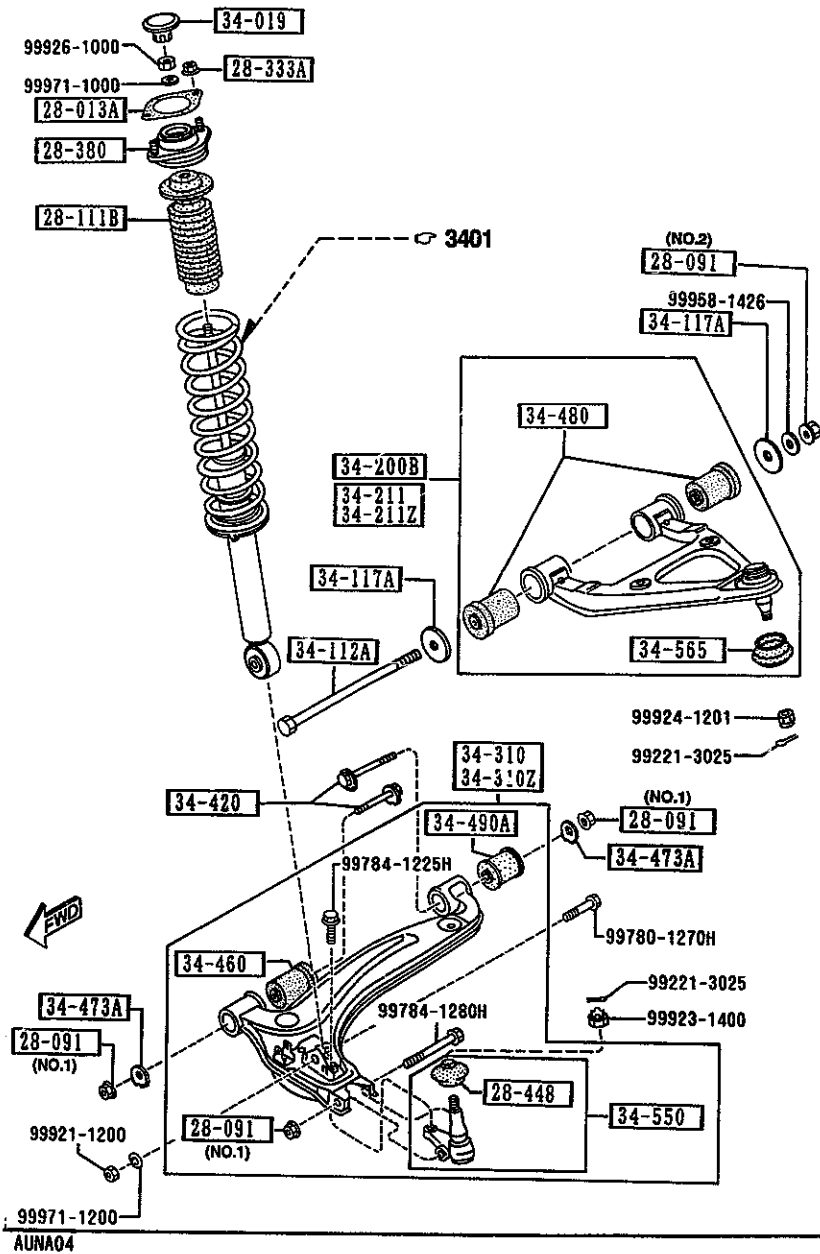
PART NO.	QTY	MODEL/RESTRICTION	MODEL/RESTRICTION	MODEL/RESTRICTION	FROM-10
28-013A		SHEET, RUBBER			
6030-28-013A	2				
28-091		NUT			
B037-28-091	6	(ILLUST. NO.1)			
FB01-28-091A	2	(ILLUST. NO.2)			
28-111B		STOPPER, BUMP			
N021-34-111	2				
28-333A		NUT, FLANGE			
H001-28-333	4				
28-380		RUBBER, MOUNTING			
NA01-28-380B	2				
28-448		SEAL, DUST-BALL JOINT			
H266-28-448	2				
34-019		CAP, DAMPER			
NA01-34-019	2				
34-112A		BOLT			
NA01-34-112	2				
34-117A		WASHER			
NA01-34-117A	4				
34-200B		ARM, UPPER-FRT			
NA01-34-200A	2	(W/O A. LOCK BRAKE)			
34-211		ARM(R), UPPER			
NA23-34-200	1	(A. LOCK BRAKE)			
34-211Z		ARM(L), UPPER			
NA23-34-250	1	(A. LOCK BRAKE)			
34-310		ARM(R), LOWER			
NA75-34-300A	1				

CAT. AUNA04-03

1995-04

3400 -2 * FRONT SUSPENSION MECHANISMS

3400 FRONT SUSPENSION MECHANISMS



PART NO.	QTY	MODEL/RESTRICTION	MODEL/RESTRICTION	MODEL/RESTRICTION	FRON-TO
34-310Z		ARM(L), LOWER			
NA75-34-350A	1				
34-420		BOLT, ADJUST			
NA75-34-4A0	4				
34-460		BUSH, RUBBER-LWR ARM			
NA01-34-460A	2				
34-473A		PLATE, CAM			
NA75-34-473	4				
34-480		BUSHING, RUBBER-LOWER ARM			
NA01-34-480A	4				
34-490A		BUSHING, RUBBER			
NA01-34-490	2				
34-550		BALL JOINT, LOWER			
NA01-34-550	2				
34-565		SEAL, DUST			
NA01-34-565	2				

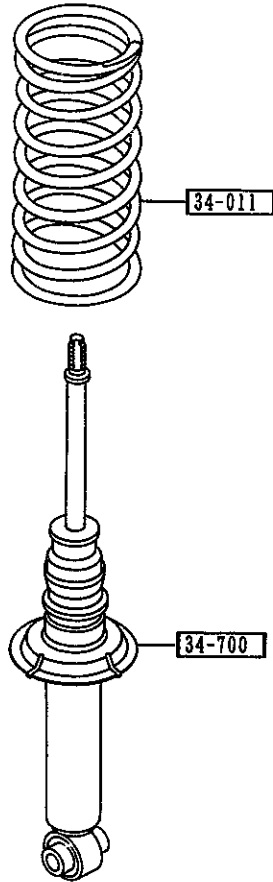
AUNA04

CAT. AUNA04-03

1995-04

3401 FRONT SPRING & DAMPER

3401 -1 * FRONT SPRING & DAMPER



PART NO.	QTY	MODEL/RESTRICTION	MODEL/RESTRICTION	MODEL/RESTRICTION	FROM-TO
34-011		SPRING, COIL-FRONT			
NA83-34-011	2	(MT)			
NA81-34-011	2	(AT)			
34-700		DAMPER, FRONT			
NO23-34-700C	2	((W/O A. LOCK BRAKE) > (BILSTEIN DAMP.))			
NA53-34-700A AN(NA53-34-700B)	2				-3914
NO18-34-700A AN(NO18-34-700B)	2				-3914
NA53-34-700B	2	(A. LOCK BRAKE)			3914-
NO18-34-700B	2	((W/O A. LOCK BRAKE) > (EXC. BILSTEIN DAMP.))			3914-
3914 NA3***-503535					



AUNA04

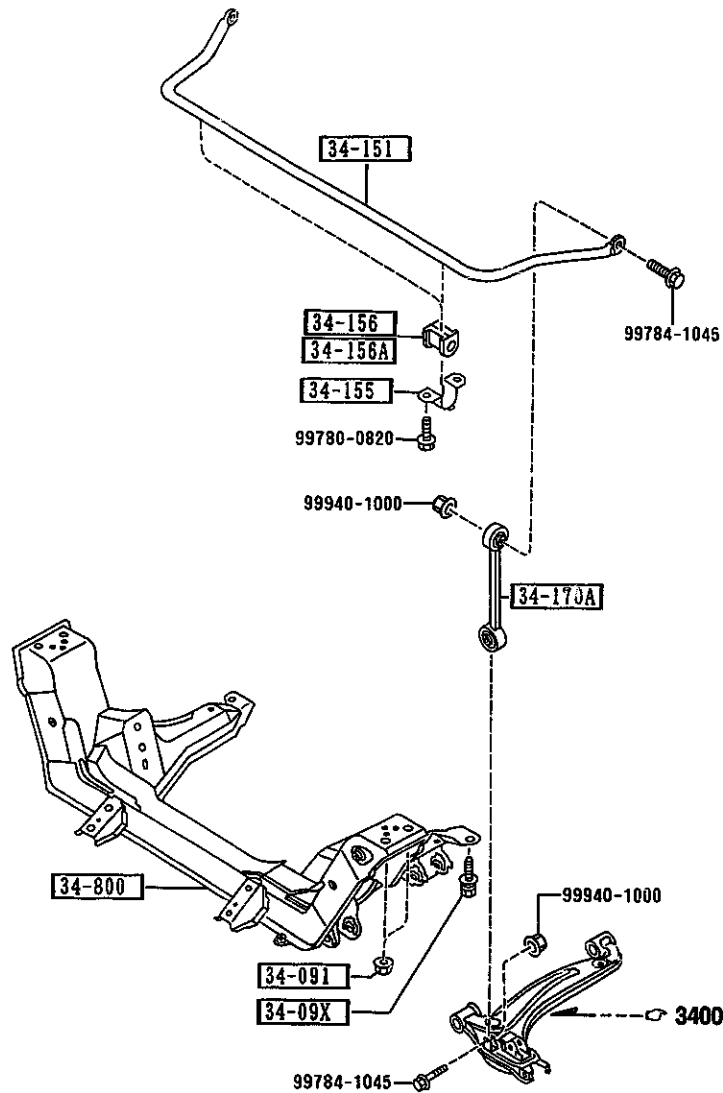
CAT. AUNA04-03

1995-04

1-J13

3410 CROSSMEMBER & STABILIZER

3410 -1 * CROSSMEMBER & STABILIZER



PART NO.	QTY	MODEL/RESTRICTION	MODEL/RESTRICTION	MODEL/RESTRICTION	FROM-TO
34-09X		BOLT			
NA01-34-09XA	4				
34-091		NUT			
FB01-34-091	4				
34-151		STABILIZER,FRONT			
NA75-34-151	1	(BILSTEIN DAMP.)			
NA80-34-151	1	(EXC.BILSTEIN DAMP.)			
34-155		PLATE,STABILIZER			
FB01-34-155	2				
34-156		BUSH,STABILIZER-FRT			
NA75-34-156	2	(BILSTEIN DAMP.)			
34-156A		RUBBER,STAB -FRT			
NA01-34-156A	2	(EXC.BILSTEIN DAMP.)			
34-170A		LINK,CONTROL-STAB			
NA01-34-170	2				
34-800		MEMBER,CROSS			
NA01-34-800C	1				

AUNA04

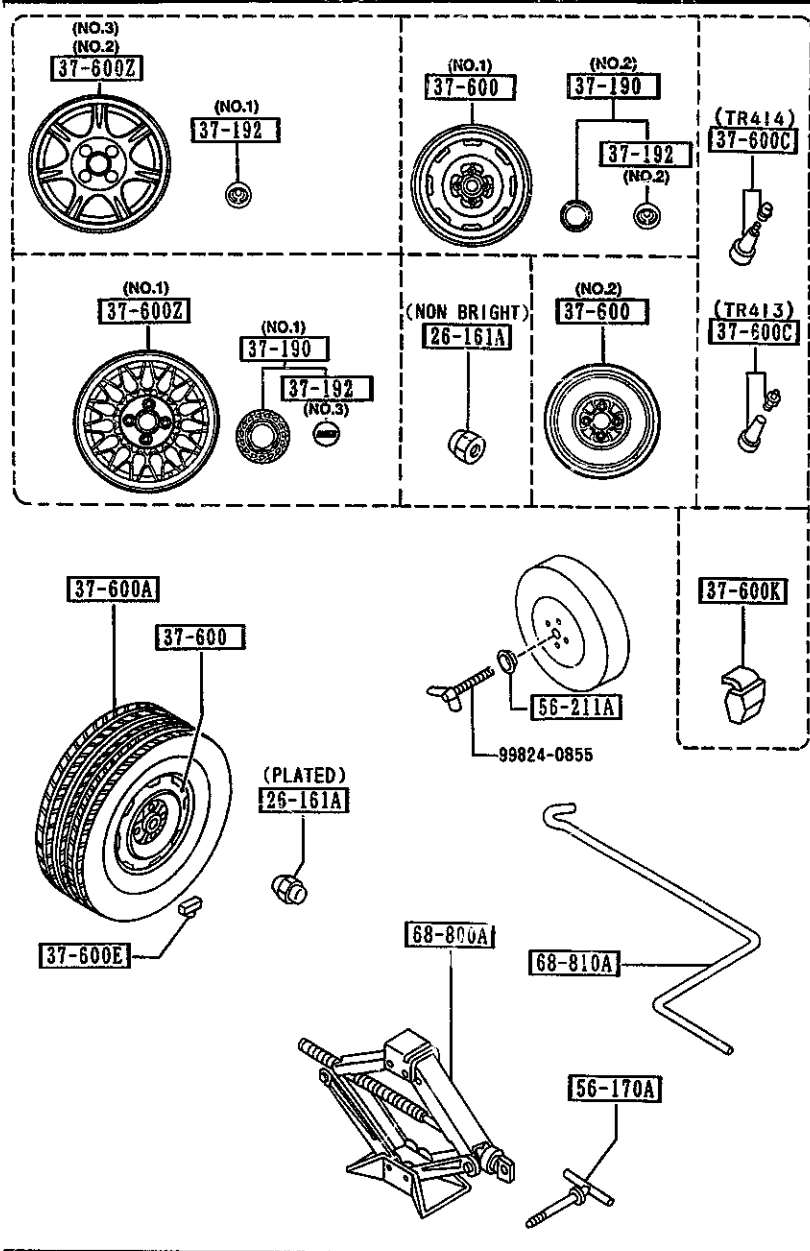
CAT. AUNA04-03

1995-04

1-K13

3700 TIRES & JACK

3700 -1 TIRES & JACK

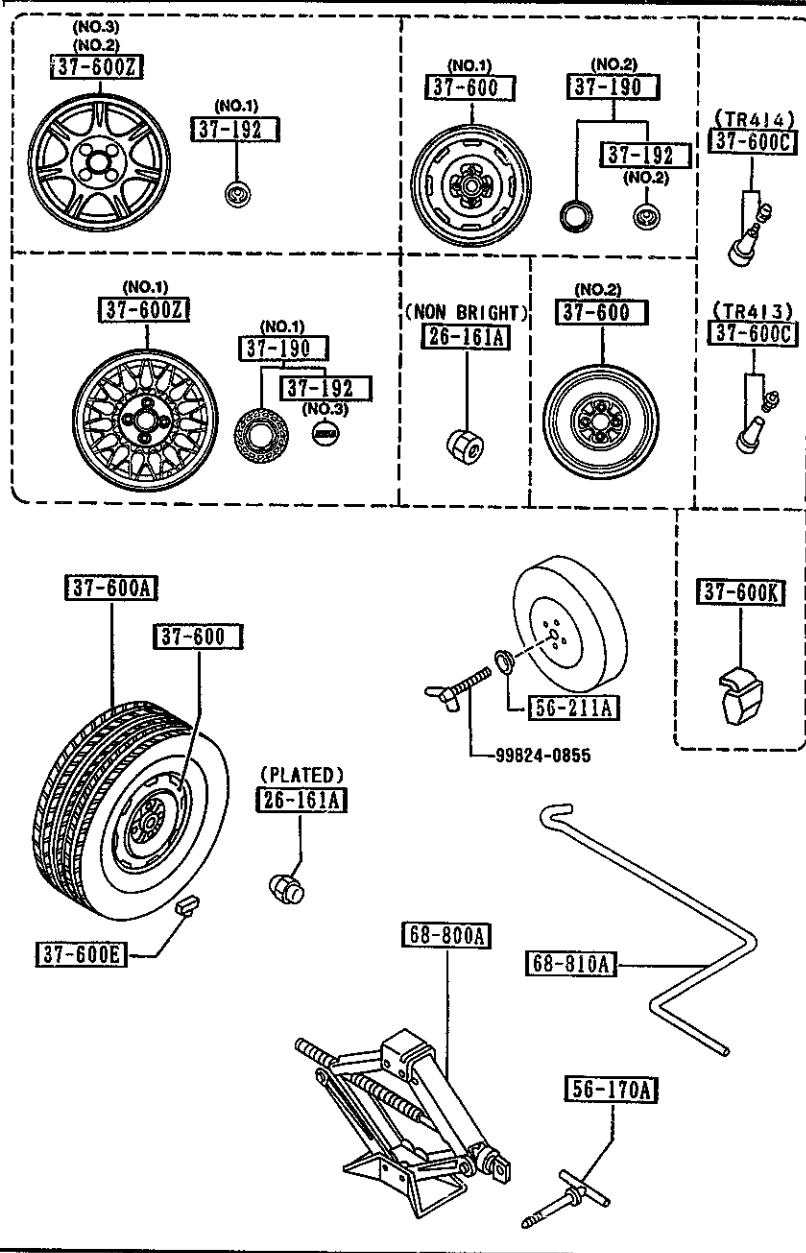


PART NO.	QTY	MODEL/RESTRICTION	MODEL/RESTRICTION	MODEL/RESTRICTION	FROM-TO
26-161A		NUT, HUB			
0603-26-161	16	NON BRIGHT			
B002-37-160	16	PLATED			
37-190		CAP, CENTER			
M011-37-190	4	(ILLUST. NO. 1)			
NA53-37-190	4	(ILLUST. NO. 2)			
37-192		EMBLEM, CAP-WHEEL			
EA02-37-192	4	(ILLUST. NO. 1)			
GA7C-37-192	4	(ILLUST. NO. 2)			
M011-37-192	4	(ILLUST. NO. 3)			
37-600		WHEEL, DISC-STEEL			
9965B-95540	4	5.5JJX14 P=100/D=45 (ILLUST. NO. 1)			
99651-84040	1	4TX14 P=100/D=45 (ILLUST. NO. 2)			
37-600A		TIRE			
90620-47614	1	T155/70D14			
90623-06684	4	P185/60R14 DUNLOP			
90624-26684	4	P185/60R14 BS			
90625-56684	4	P185/60R14 YOKOHAMA			
37-600C		VALVE, AIR			
99636-04130	1	TR413			
99636-04140	4	TR414			
37-600E		WEIGHT, DISC WHEEL-STEEL			
99655-30005	4	5G			
99655-30010	4	10G			
99655-30015	4	15G			

AUNA04

CAT. AUNA04-03

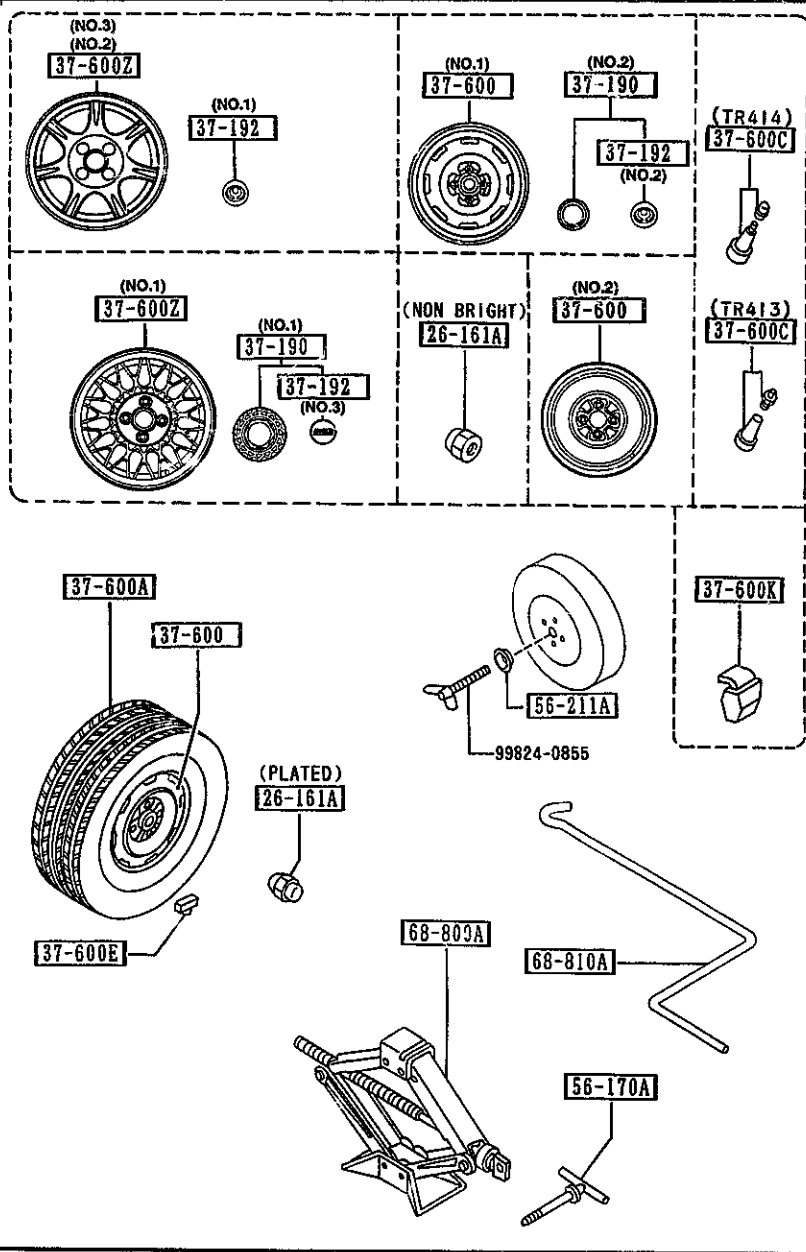
1995-04



PART NO.	QTY	MODEL/RESTRICTION	MODEL/RESTRICTION	MODEL/RESTRICTION	FROM-TO
CONT'D					
99655-30020	4	20G			
99655-30025	4	25G			
99655-30030	4	30G			
99655-30035	4	35G			
99655-30040	4	40G			
99655-30045	4	45G			
99655-30050	4	50G			
99655-30055	4	55G			
99655-30060	4	60G			
		↑ 37-600K ↓			
99655-90005	4	WEIGHT, DISC WHEEL-ALUMI 5G FOR 1-PIECE WHL			
99655-90010	4	10G FOR 1-PIECE WHL			
99655-90015	4	15G FOR 1-PIECE WHL			
99655-90020	4	20G FOR 1-PIECE WHL			
99655-90025	4	25G FOR 1-PIECE WHL			
99655-90030	4	30G FOR 1-PIECE WHL			
99655-90035	4	35G FOR 1-PIECE WHL			
99655-90040	4	40G FOR 1-PIECE WHL			
99655-90045	4	45G FOR 1-PIECE WHL			
99655-90050	4	50G FOR 1-PIECE WHL			
99655-90055	4	55G FOR 1-PIECE WHL			
99655-90060	4	60G FOR 1-PIECE WHL			

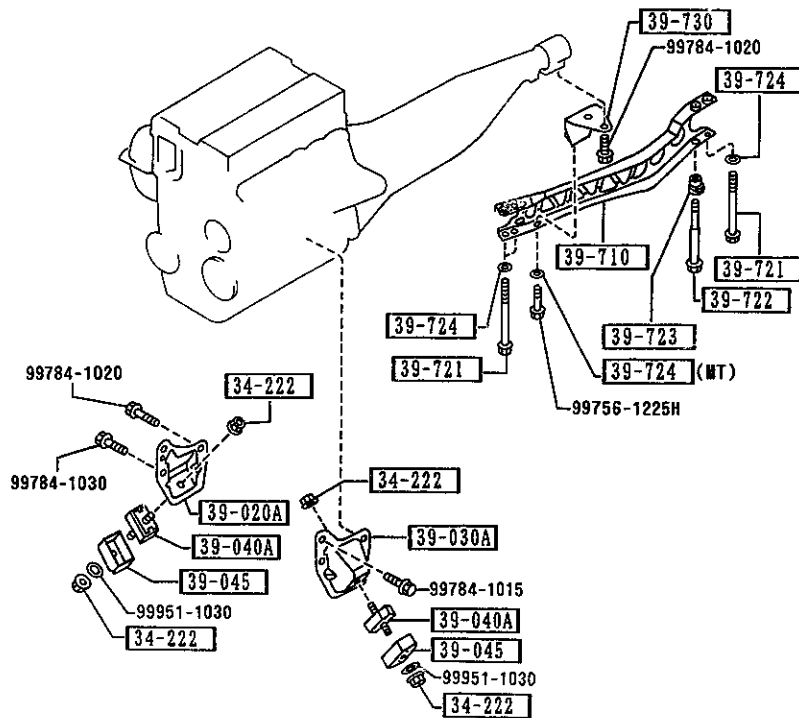
3700 -3 * TIRES & JACK

3700 TIRES & JACK



PART No.	QTY	MODEL/RESTRICTION	MODEL/RESTRICTION	MODEL/RESTRICTION	FROM-TO
37-600Z		WHEEL, DISC-ALUMI.			
99650-96040	4	6JXX14 P=100/O=45BBS (ILLUST. NO.1)			
99651-36040	4	6JXX14 SILVER (ILLUST. NO.2)			
99651-96040	4	6JXX14 BRIGHT (ILLUST. NO.3)			
56-170A		BOLT, JACK SET			
B001-56-170C	1				
56-211A		PLATE, CLAMP-JACK			
3219-56-211	1				
68-800A		JACK			
B455-37-790A	1				
68-810A		HANDLE, JACK			
GJ21-37-810	1				

3900 ENGINE & T/MISSION MOUNTINGS



PART NO.	QTY	MODEL/RESTRICTION	MODEL/RESTRICTION	MODEL/RESTRICTION	FROM TO
34-222		NUT			
8871-34-222	4				
39-020A		BRACKET(R),ENGINE			
NA75-39-021	1				
39-030A		BRACKET(L),ENGINE			
NA75-39-030	1				
39-040A		RUBBER,ENGINE MT.			
NA01-39-040A	2				
39-045		CASING,STOPPER			
NA01-39-041	2 (MT)				-3B02
A (NA01-39-041A)					
S231-39-041	2 (AT)				-3B02
A (S231-39-041A)					
NA01-39-041A	2 (MT)				3B02-
S231-39-041A	2 (AT)				3B02-
39-710		FRAME,POWER PLANT			
NA75-39-710A	1 (MT)				
NA81-39-710A	1 (AT)				
39-721		BOLT,PLANT FRAME			
NA01-39-721	3				
39-722		BOLT,PLANT FRAME			
NA01-39-722	1				
39-723		SPACER,PLANT FRAME			
NA01-39-723	1				
39-724		WASHER,PLAIN-FRAME			
NA01-39-724	3 (AT)				
NA01-39-724	4 (MT)				
39-730		BRACKET,PLANT FRAME			
NA01-39-730A	1 (MT)				

3B02 NA3***-505896



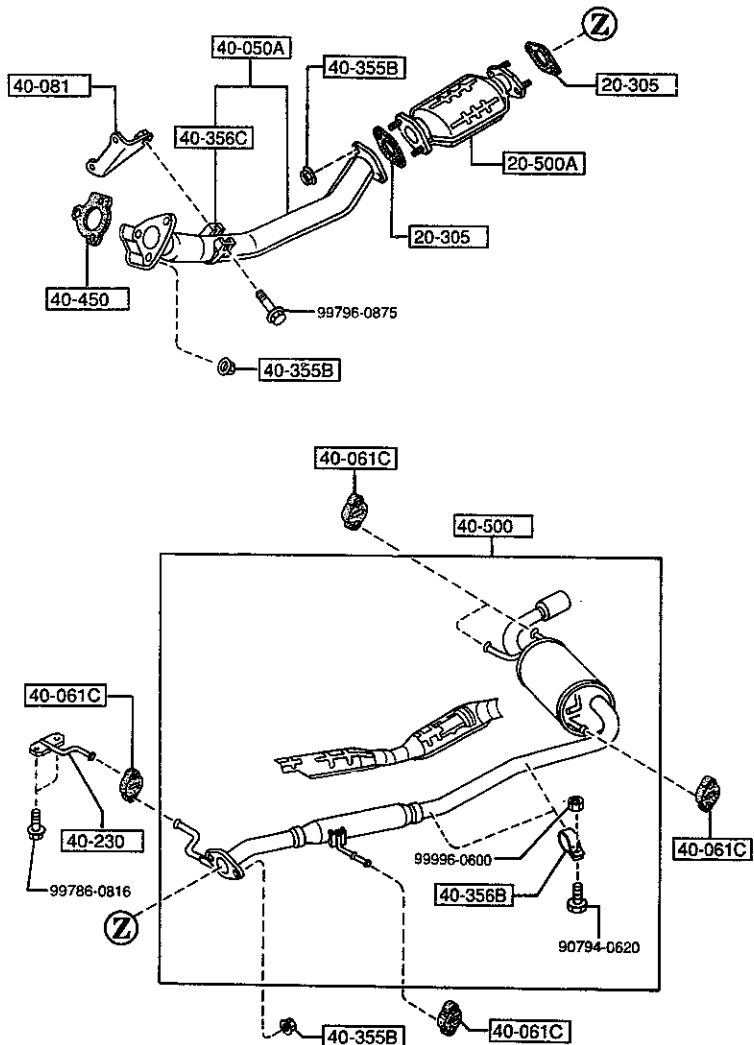
AUNA04

CAT. AUNA04-03

1995-04

4000 EXHAUST SYSTEM

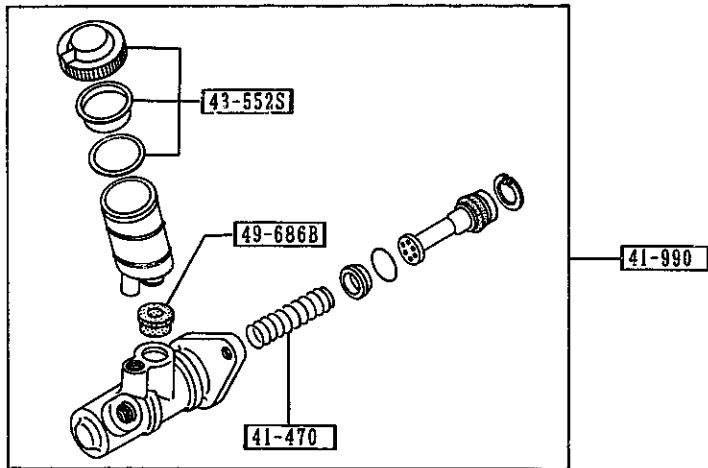
4000 -1 * EXHAUST SYSTEM



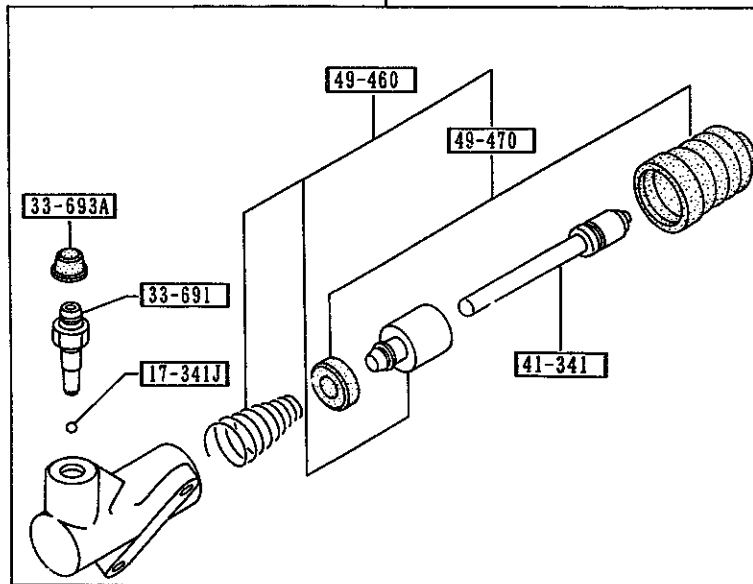
PART NO.	QTY	MODEL/RESTRICTION	MODEL/RESTRICTION	MODEL/RESTRICTION	PRGM-TC
20-305 B690-40-305	2	GASKET, EXH. PIPE-CONVERTER NON ASBESTOS			
20-500A BPEB-20-600	1	CATALYST, THREE WAY			
40-050A BP56-40-500	1	PIPE, EXHAUST-FRONT			
40-061C RF03-40-061	5	HANGER, SILENCER			
40-081 B690-40-080A	1	BRACKET, HANGER			
40-230 B690-40-690	1	BRACKET, HANGER			
40-355B JE10-40-355	7	NUT			
40-356B B6A5-40-356	2	BAND			
40-356C B690-40-356	1	BAND			
40-450 B690-40-450	1	GASKET, CONVERTER NON ASBESTOS			
40-500 BP55-40-100C BP56-40-100C	1 (MT) 1 (AT)	SILENCER, MAIN			

4140 -1 * CLUTCH RELEASE & MASTER CYLINDER* (MANUAL TRANSMISSION)

4140 CLUTCH RELEASE & MASTER CYLINDERS (MANUAL TRANSMISSION)



41-920



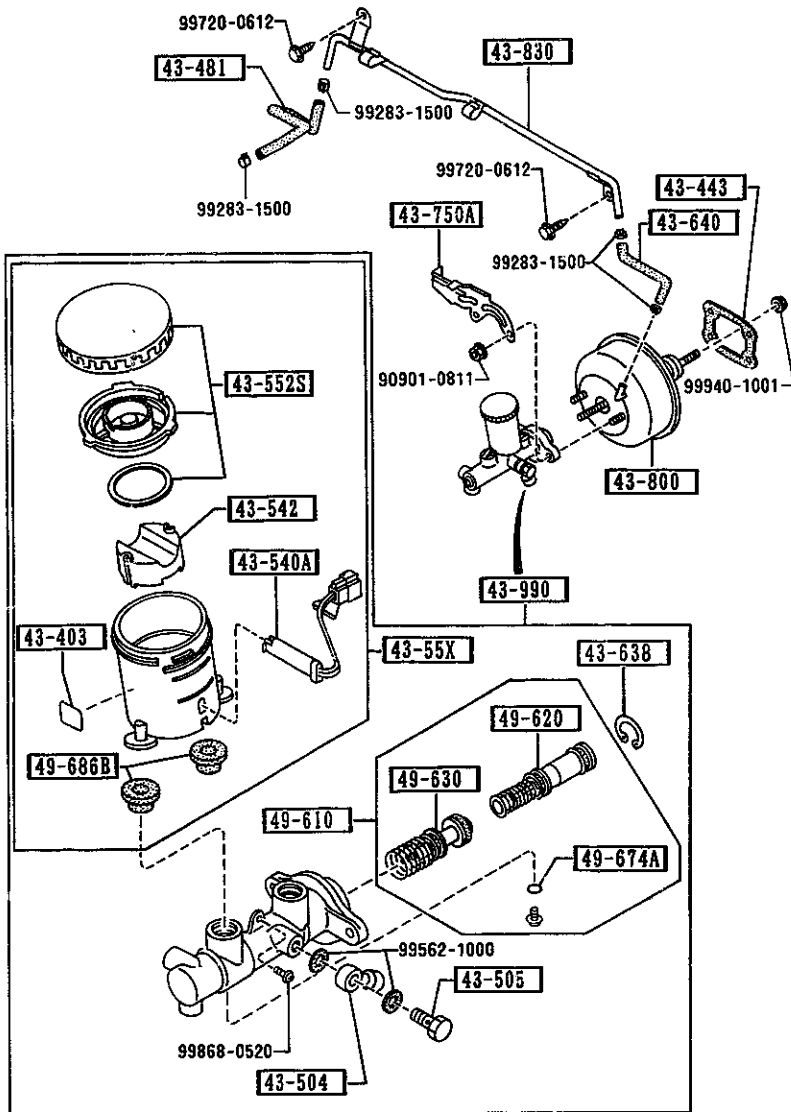
AUNA04

PART NO.	QTY	MODEL/RESTRICTION	MODEL/RESTRICTION	MODEL/RESTRICTION	FROM-TO
17-341J	1	BALL,STEEL			
99211-1500	1				
33-691	1	SCREW,BLEEDER			
0259-33-691	1				
33-693A	1	CAP,BLEEDER SCREW			
0259-33-693	1				
41-341	1	ROD,PUSH			
H266-41-341	1				
41-470	1	SPRING			
B312-41-470	1				
41-920	1	CYL.,CLUTCH RELEASE			
NA01-41-920	1				
41-990	1	CYL.,CLUTCH MASTER			
NA01-41-400A	1				
43-552S	1	CAP SET,RESERVE TANK			
B093-49-580	1				
49-460	1	PARTS KIT,INNER			
H005-49-460	1				
49-470	1	SEAL KIT			
H005-49-470	1				
49-686B	1	BUSH,ELBOW JOINT			
0305-49-686B	1				

CAT. AUNA04-03

1995-04

4340 BRAKE MASTER CYLINDER & POWER BRAKE
(W/O ANTI LOCK BRAKE SYSTEM)



4340 -2 * BRAKE MASTER CYLINDER & POWER BRAKE
(W/O ANTI LOCK BRAKE SYSTEM)

PART NO.	QTY	MODEL/RESTRICTION	MODEL/RESTRICTION	MODEL/RESTRICTION	FROM-TG
CONT'D					
NA01-43-830A	1				
+ 43-990		CYL., TANDEM MASTER			
+ 43-990					
NA01-43-40Z	1				-3B01
A (NA01-43-40Z)					
NA01-43-40Z	1				3B01-
+ 49-610		PARTS KIT, INN.-BRAKE			
+ 49-610					
BW0A-43-61Z	1				
+ 49-620		PISTON, PRIMARY			
+ 49-620					
BW0A-43-62Z	1				
+ 49-630		PISTON, FLOATING			
+ 49-630					
BW0A-43-63Z	1				
+ 49-674A		RING, 'O'-MASTER CYL.			
+ 49-674A					
99541-00403	1				
+ 49-686B		BUSH, ELBOW JOINT			
+ 49-686B					
F100-49-686	2				

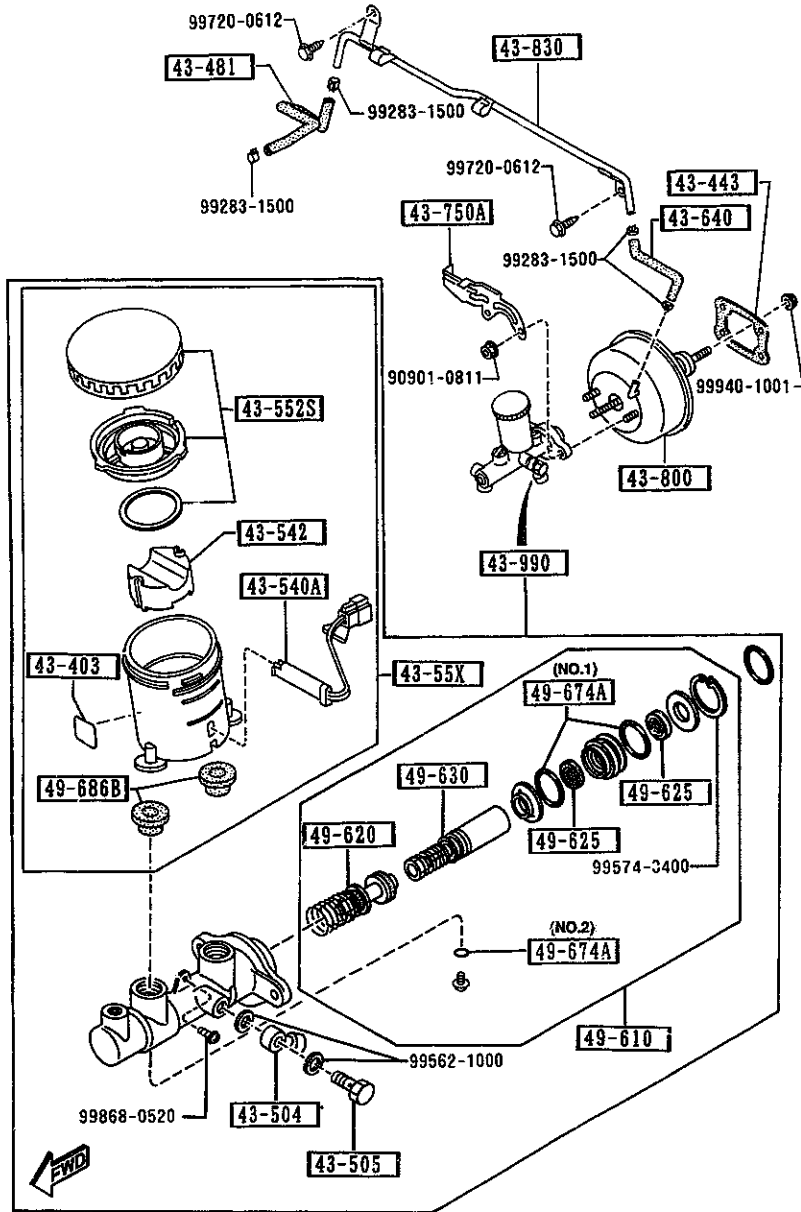
3B01 NA3***-505807

AUNA04

CAT. AUNA04-03

1995-04

4340 A BRAKE MASTER CYLINDER & POWER BRAKE
(ANTI LOCK BRAKE SYSTEM)



4340 A-1 BRAKE MASTER CYLINDER & POWER BRAKE
(ANTI LOCK BRAKE SYSTEM)

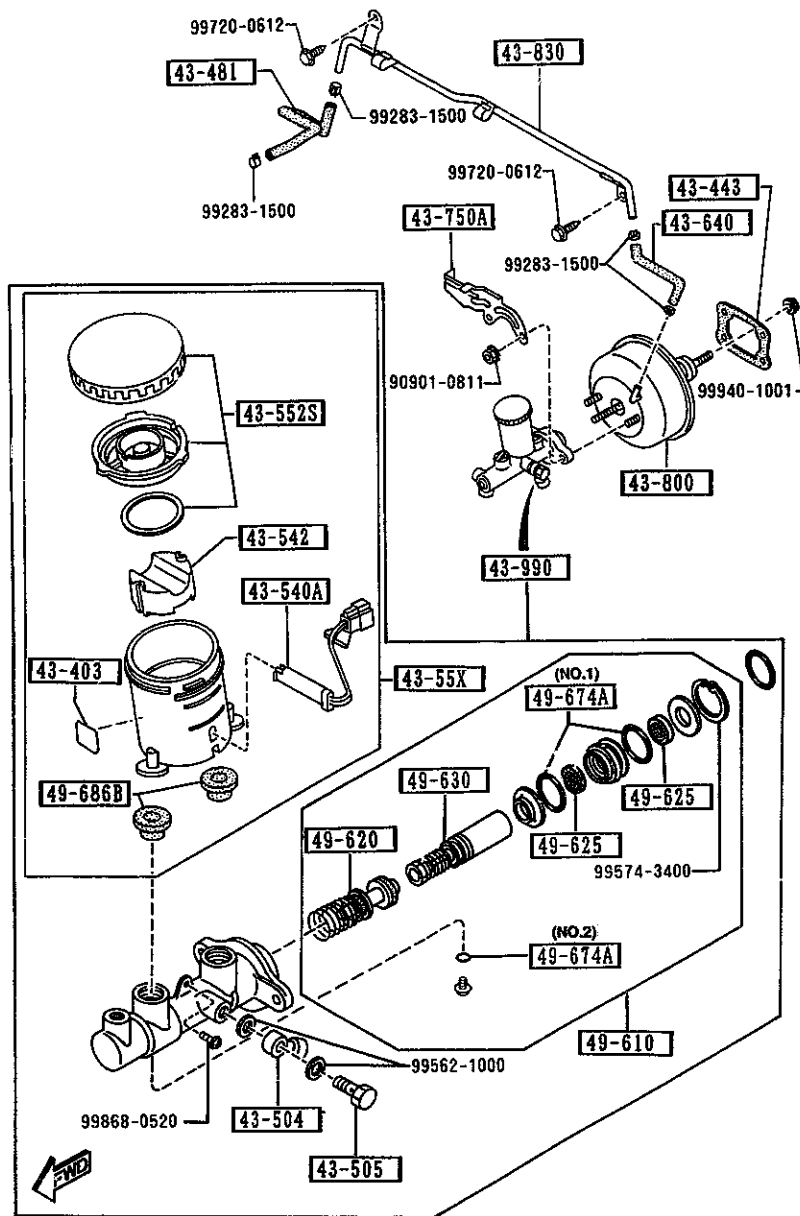
PART NO.	QTY	MODEL/RESTRICTION	MODEL/RESTRICTION	MODEL/RESTRICTION	FROM-TO
43-403		LABEL, ISO			
TA04-43-403A	1				
43-443		GASKET, VAC POWER ASSIST			
H001-43-443	1	NON ASBESTOS			
43-481		HOSE, VACUUM			
NA75-43-481	1				
43-504		JOINT, PIPE			
WD23-43-504	1				
43-505		BOLT, CONNECTOR			
WD23-43-505	1				
43-540A		SENSOR, RESERVE TANK			
GA97-43-540	1				
43-542		FLOAT			
3597-43-542	1				
43-55X		SET, TANK			
NAY3-43-55X	1				
43-552S		CAP SET, RESERVE TANK			
D001-49-650A	1				
43-640		HOSE, VACUUM			
NA01-43-640	1				
43-750A		HOLDER, P. B. VALVE			
NA02-43-750A	1				
43-800		VACUUM POWER ASSIST			
NA80-43-800	1				
43-830		PIPE, VACUUM			
NA23-43-830B	1				
43-990		CYL., TANDEM MASTER			

AUNA04

CAT. AUNA04-03

1995-04

4340 A BRAKE MASTER CYLINDER & POWER BRAKE
(ANTI LOCK BRAKE SYSTEM)



4340 A-2 * BRAKE MASTER CYLINDER & POWER BRAKE
(ANTI LOCK BRAKE SYSTEM)

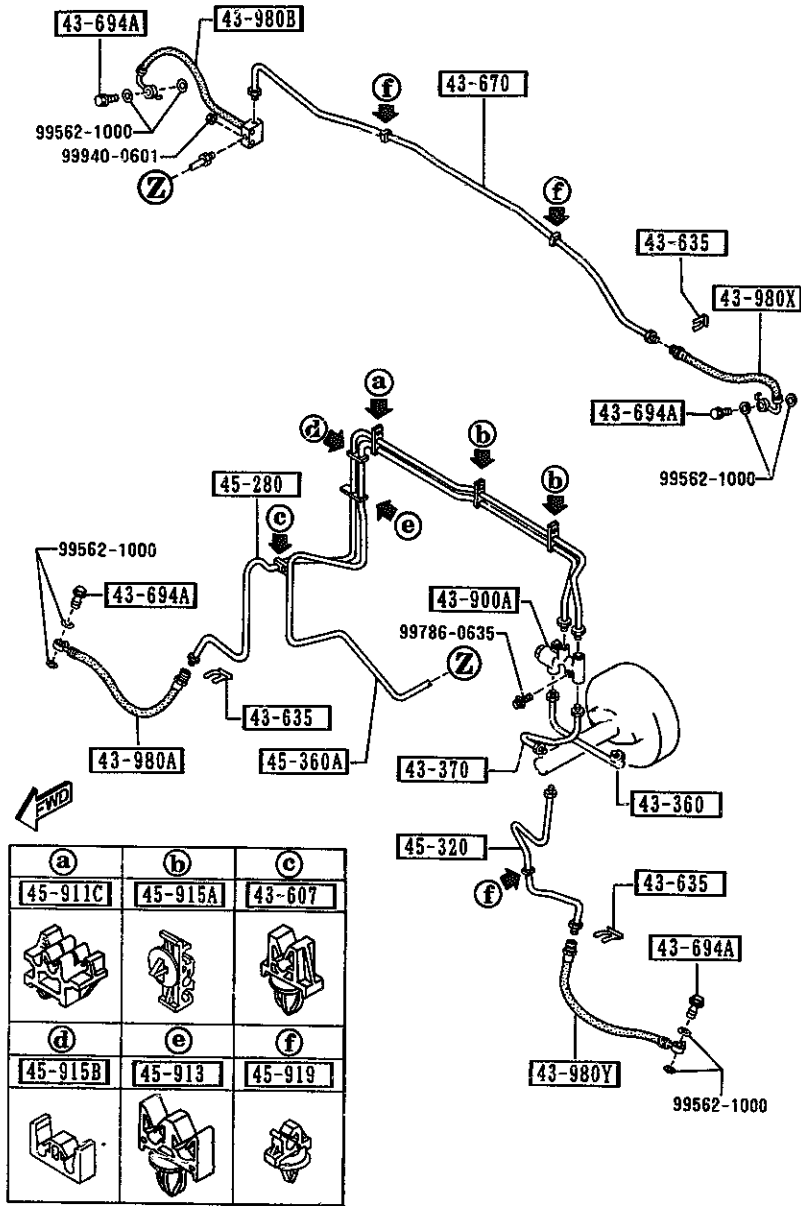
PART NO.	QTY	MODEL/RESTRICTION	MODEL/RESTRICTION	MODEL/RESTRICTION	FROM-TO
CONT'D					
NAV3-43-40ZA	1				-3801
A (NA23-43-40Z)					
NA23-43-40Z	1				3801-
-----+ 49-610 -----+		PARTS KIT, INN.-BRAKE			
NAV3-43-41Z	1				
-----+ 49-620 -----+		PISTON, PRIMARY			
B252-49-620A	1				
-----+ 49-625 -----+		CUP, SECONDARY			
NA23-43-625	2				
-----+ 49-630 -----+		PISTON, FLOATING			
NA23-43-63Z	1				
-----+ 49-674A -----+		RING, 'D'-MASTER CYL.			
NA23-43-515	2	SHINEI KOGYO (ILLUST. NO.1)			
99541-00603	1	NOK (ILLUST. NO.2)			
-----+ 49-686B -----+		BUSH, ELBOW JOINT			
F100-49-686	2				
3801 NA3***-505807					

AUNA04

CAT. AUNA04-03

1995-04

4360 BRAKE PIPINGS
(W/D ANTI LOCK BRAKE SYSTEM)



AUNA04

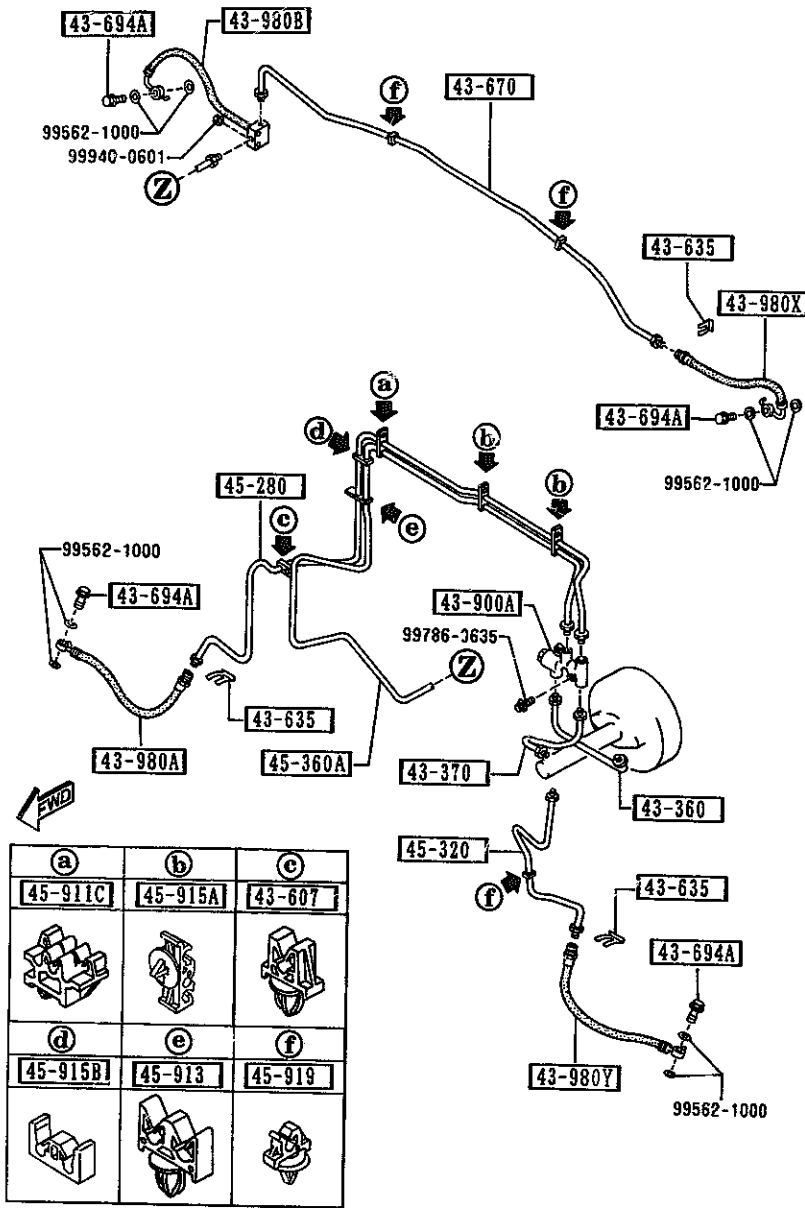
4360 -1 BRAKE PIPINGS
(W/D ANTI LOCK BRAKE SYSTEM)

PART NO.	QTY	MODEL/RESTRICTION	MODEL/RESTRICTION	MODEL/RESTRICTION	FROM-TO
43-360		PIPE, BRAKE			
NA01-43-360A	1				
43-370		PIPE, BRAKE			
NA01-43-370	1				
43-607		CLIP, RR BRAKE PIPE			
G309-43-607	1				
43-635		CLIP, FLEXIBLE HOSE			
W023-43-635	3				
43-670		PIPE, BRAKE-REAR			
NA01-43-670A	1				
43-694A		BOLT, CONNECTOR			
B001-43-694A	4				
43-900A		VALVE, P. B.			
H380-43-900	1				
43-980A		HOSE(R), FLEXIBLE-FRT			
NA75-43-810	1				
43-980B		HOSE(R), FLEXIBLE-RR			
NA75-43-980	1				
43-980X		HOSE(L), FLEXIBLE-RR			
NA75-43-990	1				
43-980Y		HOSE(L), FLEXIBLE-FRT			
NA75-43-820	1				
45-280		PIPE(R), BRAKE-FRONT			
NA75-45-280	1				
45-320		PIPE(L), BRAKE-FRONT			
NA01-45-320C	1				
45-360A		PIPE, BRAKE-REAR			
NA75-45-360A	1				

CAT. AUNA04-03

1995-04

4360 BRAKE PIPINGS
(W/O ANTI LOCK BRAKE SYSTEM)



AUNA04

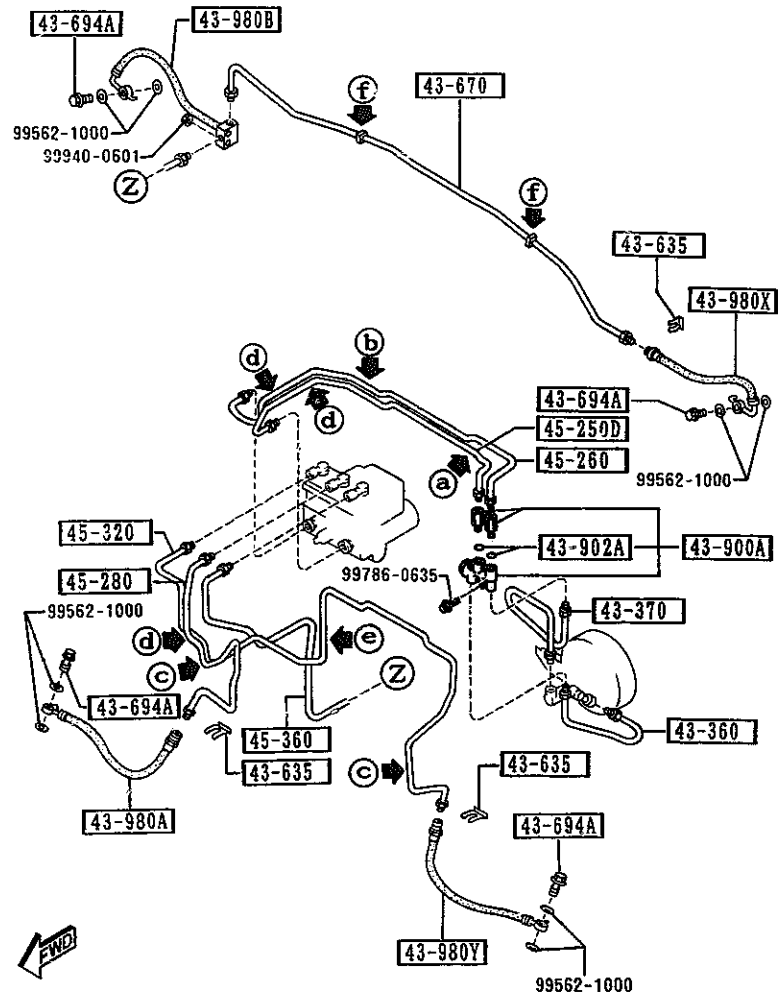
4360 -2 * BRAKE PIPINGS
(W/O ANTI LOCK BRAKE SYSTEM)

PART NO.	QTY	MODEL/RESTRICTION	MODEL/RESTRICTION	MODEL/RESTRICTION	FROM-TO
45-911C					
NA01-45-911	1				
45-913					
NA75-45-913	1				
45-915A					
B001-45-915	2				
45-915B					
NA01-45-915A	1				
45-919					
B001-45-919B	3				

CAT. AUNA04-05

1995-04

4360 A BRAKE PIPINGS
(ANTI LOCK BRAKE SYSTEM)



a	b	c	d	e	f
45-910E	45-920	43-607	43-919A	45-916A	45-919

AUNA04

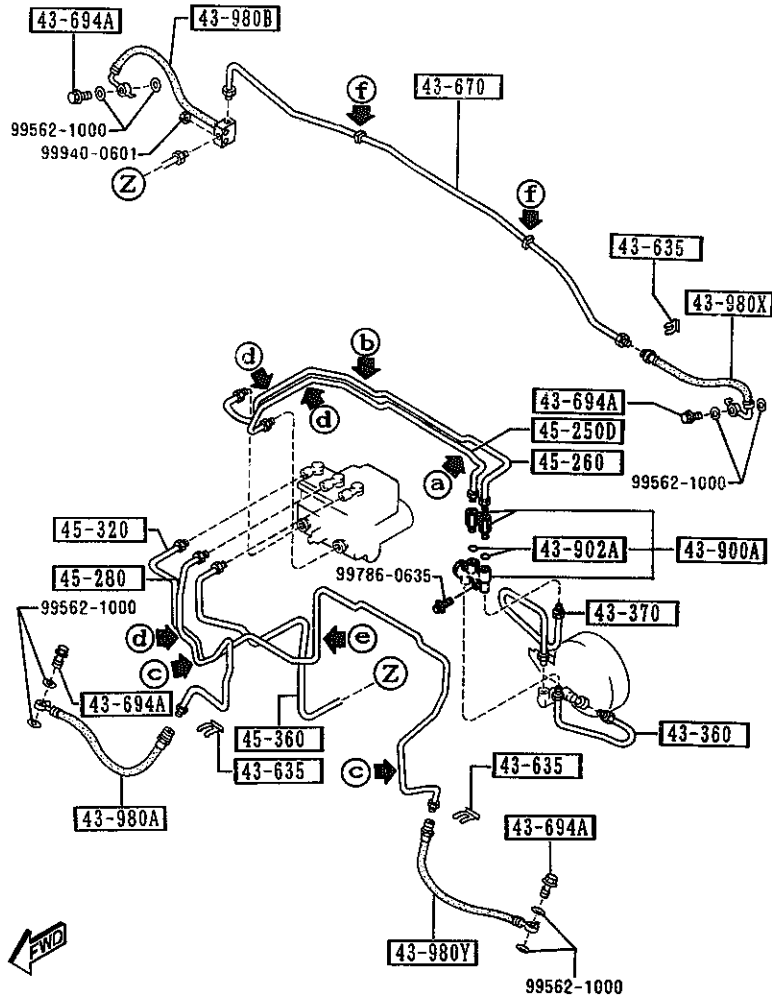
4360 A-1 BRAKE PIPINGS
(ANTI LOCK BRAKE SYSTEM)

PART NO.	QTY	MODEL/RESTRICTION	MODEL/RESTRICTION	MODEL/RESTRICTION	FROM-TO
43-360		PIPE, BRAKE			
NA23-43-360A	1				
43-370		PIPE, BRAKE			
NA23-43-370A	1				
43-607		CLIP, RR BRAKE PIPE			
G309-43-607	2				
43-635		CLIP, FLEXIBLE HOSE			
W023-43-635	3				
43-670		PIPE, BRAKE-REAR			
NA03-43-670A	1				
43-694A		BOLT, CONNECTOR			
B001-43-694A	4				
43-900A		VALVE, P. B.			
FD04-43-920	1				
43-902A		RING, O'			
NA17-43-902	2				
43-919A		HOLDER, BRAKE PIPE			
NA20-45-915	3				
43-980A		HOSE(R), FLEXIBLE-FRT			
NA75-43-810	1				
43-980B		HOSE(R), FLEXIBLE-RR			
NA75-43-980	1				
43-980X		HOSE(L), FLEXIBLE-RR			
NA75-43-990	1				
43-980Y		HOSE(L), FLEXIBLE-FRT			
NA75-43-820	1				
45-250D		PIPE NO. 1, BRAKE-FRT			
NA20-45-230C	1				

CAT. AUNA04-03

1995-04

4360 A BRAKE PIPINGS
(ANTI LOCK BRAKE SYSTEM)



a	b	c	d	e	f
45-910E	45-920	43-607	43-919A	45-916A	45-919

4360 A-2 * BRAKE PIPINGS
(ANTI LOCK BRAKE SYSTEM)

PART NO.	QTY	MODEL/RESTRICTION	MODEL/RESTRICTION	MODEL/RESTRICTION	FROM-TO
45-260		PIPE NO.2, BRAKE-FRT.			
NA20-45-240C	1				
45-280		PIPE(R), BRAKE-FRONT			
NA20-45-280B	1				
45-320		PIPE(L), BRAKE-FRONT			
NAB0-45-320	1				
45-360		PIPE NO.2, BRAKE-REAR			
NA20-45-360E	1				
45-910E		HOLDER, PIPE			
NA20-45-910A	1				
45-916A		HOLDER, PIPE			
HG31-45-915	1				
45-919		CLIP, PIPE			
B001-45-919B	2				
45-920		BRACKET			
NA20-45-920B	1				

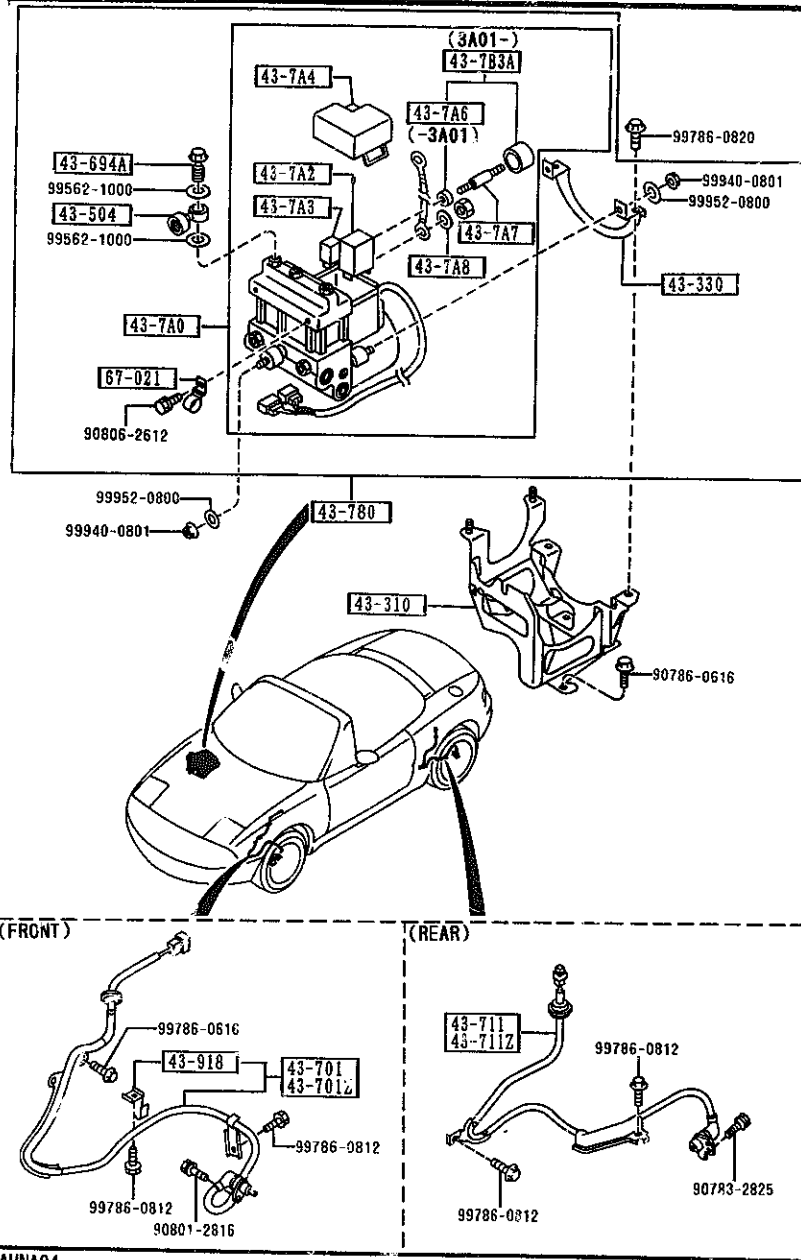
AUNA04

CAT. AUNA04-03

1995-04

4370 ANTILOCK BRAKE SYSTEM

4370 -2 * ANTILOCK BRAKE SYSTEM



PART NO.	QTY	MODEL/RESTRICTION	MODEL/RESTRICTION	MODEL/RESTRICTION	FROM-TO
43-711		SENSOR(R),RR A.B.S.			
NA23-43-71YB	1				
43-711Z		SENSOR(L),RR-A.B.S.			
NA23-43-72YB	1				
43-780		ANTILOCK BRAKE			
NA23-43-780G	1				
43-918		CLIP,SENSOR HARNESS			
NA23-43-705	2				
67-021		CLIP			
BE32-67-021	2				

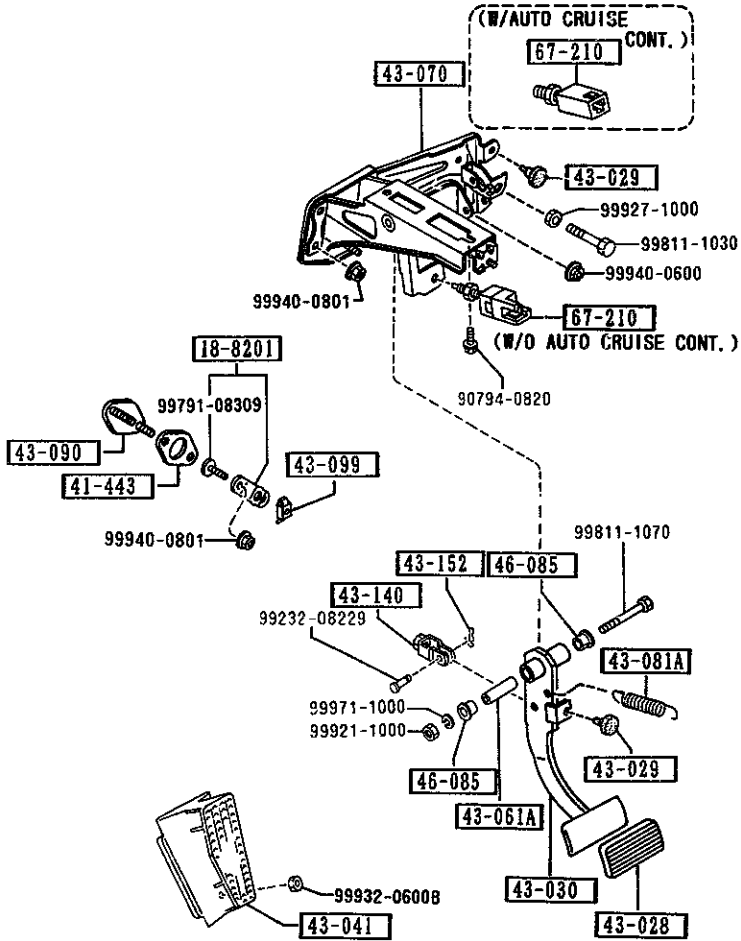
AUNA04

CAT. AUNA04-03

1995-04

4300A BRAKE PEDALS (AUTOMATIC TRANSMISSION)

4300A -2 * BRAKE PEDALS (AUTOMATIC TRANSMISSION)



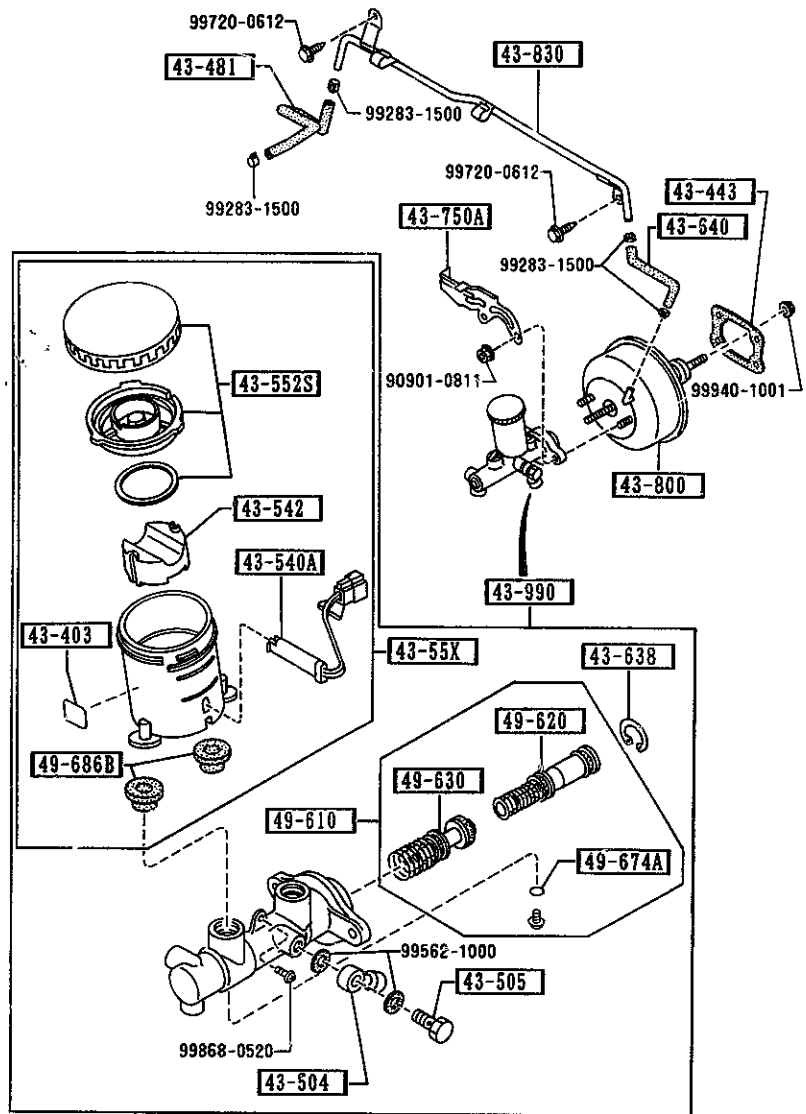
PART NO.	QT	MODEL/RESTRICTION	MODEL/RESTRICTION	MODEL/RESTRICTION	FRONT TO
43-152		PIN, SNAP			
D001-43-152	1				
46-085		BUSH			
1015-46-085	2				
67-210		SWITCH, STOP-LAMP			
BR70-66-490A	1	PKG-B, PKG-C, (W/AUTO CRUISE CONT.)			
B001-66-490A	1	BASE, PKG-A, PKG-R, (W/O AUTO CRUISE CONT.)			

AUNA04

CAT. AUNA04-03

1995-04

4340 BRAKE MASTER CYLINDER & POWER BRAKE
(W/O ANTI LOCK BRAKE SYSTEM)



4340 -1 BRK.- MASTER CYLINDER & POWER BRAKE
(W/O ANTI LOCK BRAKE SYSTEM)

PART NO.	QTY	MODEL/RESTRICTION	MODEL/RESTRICTION	MODEL/RESTRICTION	FROM-TO
43-403		LABEL, ISO			
TA04-43-403A	1				
43-443		GASKET, VAC POWER ASSIST NON ASBESTOS			
H001-43-443	1				
43-481		HOSE, VACUUM			
NA75-43-481	1				
43-504		JOINT, PIPE			
W023-43-504	1				
43-505		BOLT, CONNECTOR			
W023-43-505	1				
43-540A		SENSOR, RESERVE TANK			
GA97-43-540	1				
43-542		FLOAT			
3597-43-542	1				
43-55X		SET, TANK			
B2V6-43-55X	1				
43-552S		CAP SET, RESERVE TANK			
D001-49-650A	1				
43-638		RING, RETAINING			
GA02-49-638	1				
43-640		HOSE, VACUUM			
NA01-43-640	1				
43-750A		HOLDER, P. B. VALVE			
NA02-43-750A	1				
43-800		VACUUM POWER ASSIST			
NA75-43-800	1				
43-830		PIPE, VACUUM			

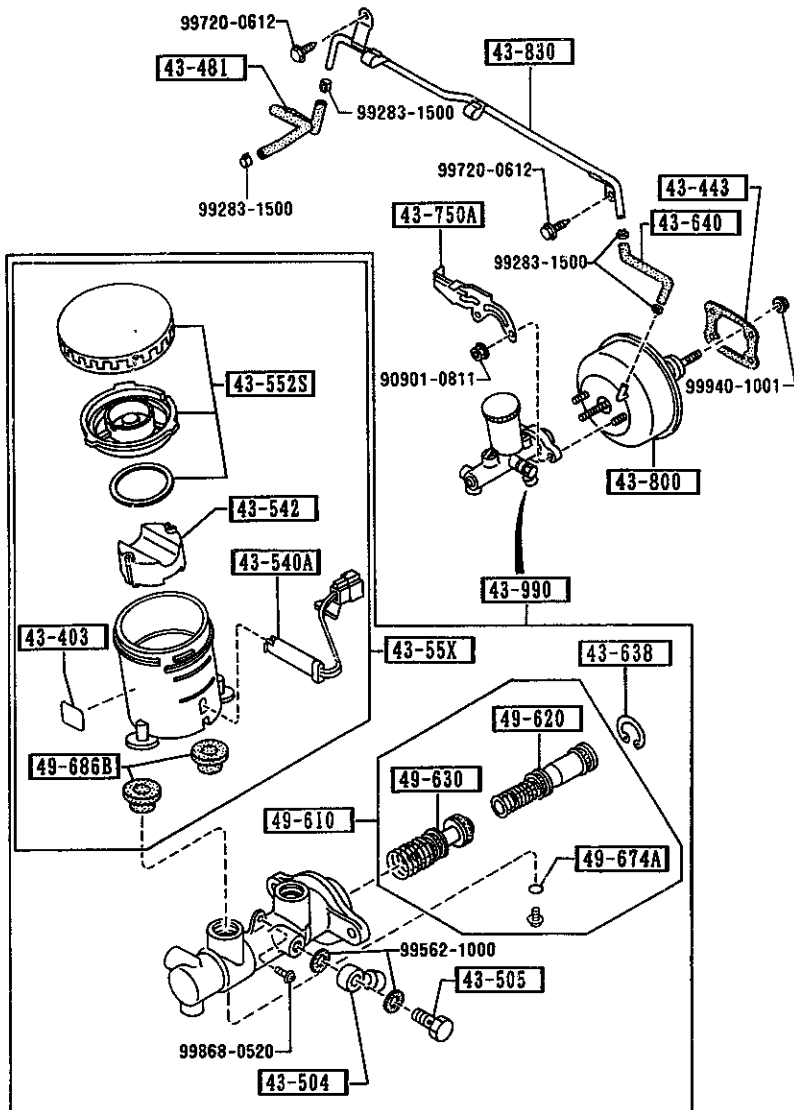


AUNA04

CAT. AUNA04-03

1995-04

4340

**BRAKE MASTER CYLINDER & POWER BRAKE
(W/O ANTI LOCK BRAKE SYSTEM)**

**4340 -2 * BRAKE MASTER CYLINDER & POWER BRAKE
(W/O ANTI LOCK BRAKE SYSTEM)**

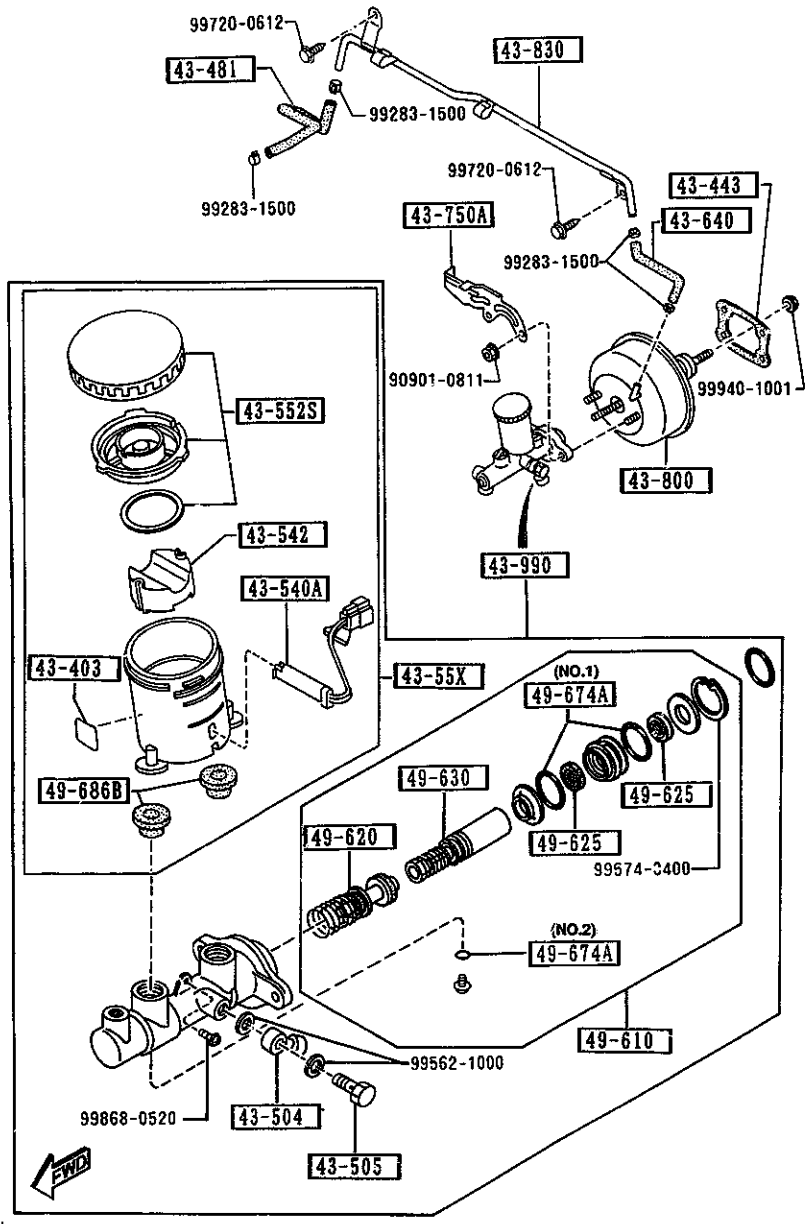
PART NO.	QTY	MODEL/RESTRICTION	MODEL/RESTRICTION	MODEL/RESTRICTION	FROM-TO
CONT'D					
NA01-43-830A	1				
----- 43-990 -----		CYL., TANDEM MASTER			
NA01-43-40Z A (NA01-43-40Z)	1				-3B01
NA01-43-40Z	1				3B01-
----- 49-610 -----		PARTS KIT, INN.-BRAKE			
BW0A-43-61Z	1				
----- 49-620 -----		PISTON, PRIMARY			
BW0A-43-62Z	1				
----- 49-630 -----		PISTON, FLOATING			
BW0A-43-63Z	1				
----- 49-674A -----		RING, 'O'-MASTER CYL.			
99541-00403	1				
----- 49-686B -----		BUSH, ELBOW JOINT			
F100-49-686	2				
3B01 NA3***-505807					

AUNA04

CAT. AUNA04-03

1995-04

4340 A BRAKE MASTER CYLINDER & POWER BRAKE
(ANTI LOCK BRAKE SYSTEM)



4340 A-1 BRAKE MASTER CYLINDER & POWER BRAKE
(ANTI LOCK BRAKE SYSTEM)

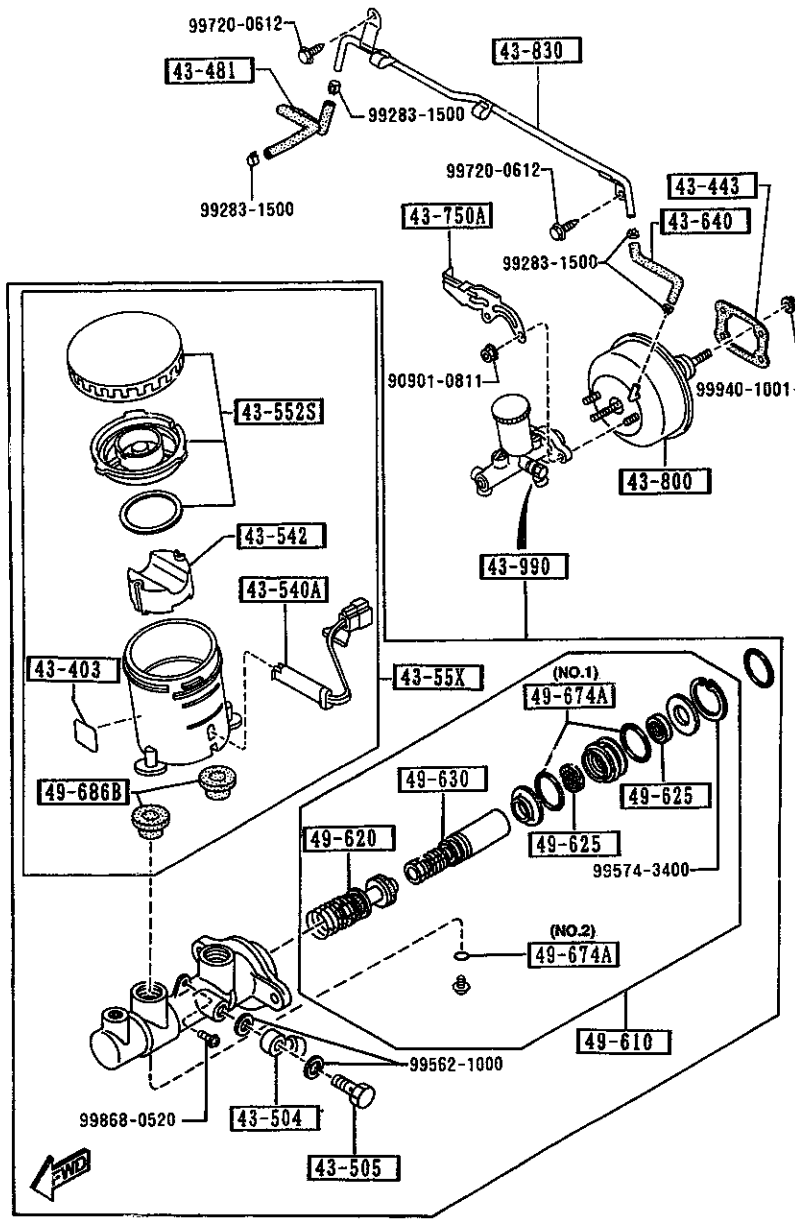
PART NO.	QTY	MODEL/RESTRICTION	MODEL/RESTRICTION	MODEL/RESTRICTION	FROM-TO
43-403		LABEL, ISO			
TA04-43-403A	1				
43-443		GASKET, VAC POWER ASSIST			
H001-43-443	1	NON ASBESTOS			
43-481		HOSE, VACUUM			
NA75-43-481	1				
43-504		JOINT, PIPE			
W023-43-504	1				
43-505		BOLT, CONNECTOR			
W023-43-505	1				
43-540A		SENSOR, RESERVE TANK			
GA97-43-540	1				
43-542		FLOAT			
3597-43-542	1				
43-55X		SET, TANK			
NAY3-43-55X	1				
43-552S		CAP SET, RESERVE TANK			
D001-49-650A	1				
43-640		HOSE, VACUUM			
NA01-43-640	1				
43-750A		HOLDER, P. B. VALVE			
NA02-43-750A	1				
43-800		VACUUM POWER ASSIST			
NAB0-43-800	1				
43-830		PIPE, VACUUM			
NA23-43-830B	1				
43-990		CYL., TANDEM MASTER			

AUNA04

CAT. AUNA04-03

1995-04

4340 A BRAKE MASTER CYLINDER & POWER BRAKE
(ANTI LOCK BRAKE SYSTEM)



4340 A-2 * BRAKE MASTER CYLINDER & POWER BRAKE
(ANTI LOCK BRAKE SYSTEM)

PART NO.	QTY	MODEL/RESTRICTION	MODEL/RESTRICTION	MODEL/RESTRICTION	FROM-TO
CONT'D					
NAY3-43-40ZA	1				-3B01
A (NA23-43-40Z)					
NA23-43-40Z	1				3B01-
+-----+ 49-610 +-----+		PARTS KIT, INN.-BRAKE			
NAY3-43-41Z	1				
+-----+ 49-620 +-----+		PISTON, PRIMARY			
B252-49-620A	1				
+-----+ 49-625 +-----+		CUP, SECONDARY			
NA23-43-625	2				
+-----+ 49-630 +-----+		PISTON, FLOATING			
NA23-43-63Z	1				
+-----+ 49-674A +-----+		RING, *O*-MASTER CYL.			
NA23-43-515	2	SHINEI KOGYO (ILLUST. NO. 1)			
99541-00603	1	NOK (ILLUST. NO. 2)			
+-----+ 49-686B +-----+		BUSH, ELBOW JOINT			
F100-49-686	2				

3B01 NA3***-505807

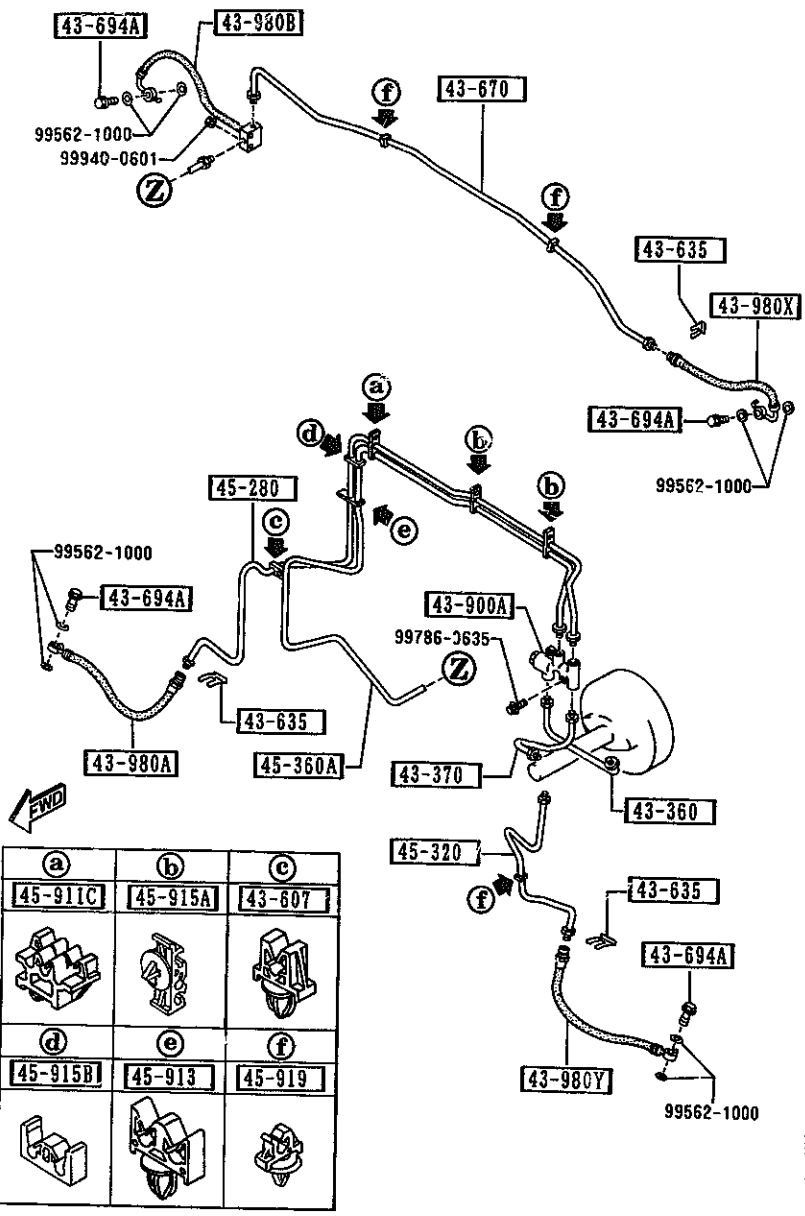
AUNA04

CAT. AUNA04-03

1995-04

4360 BRAKE PIPINGS
(W/O ANTI LOCK BRAKE SYSTEM)

4360 -2 * BRAKE PIPINGS
(W/O ANTI LOCK BRAKE SYSTEM)



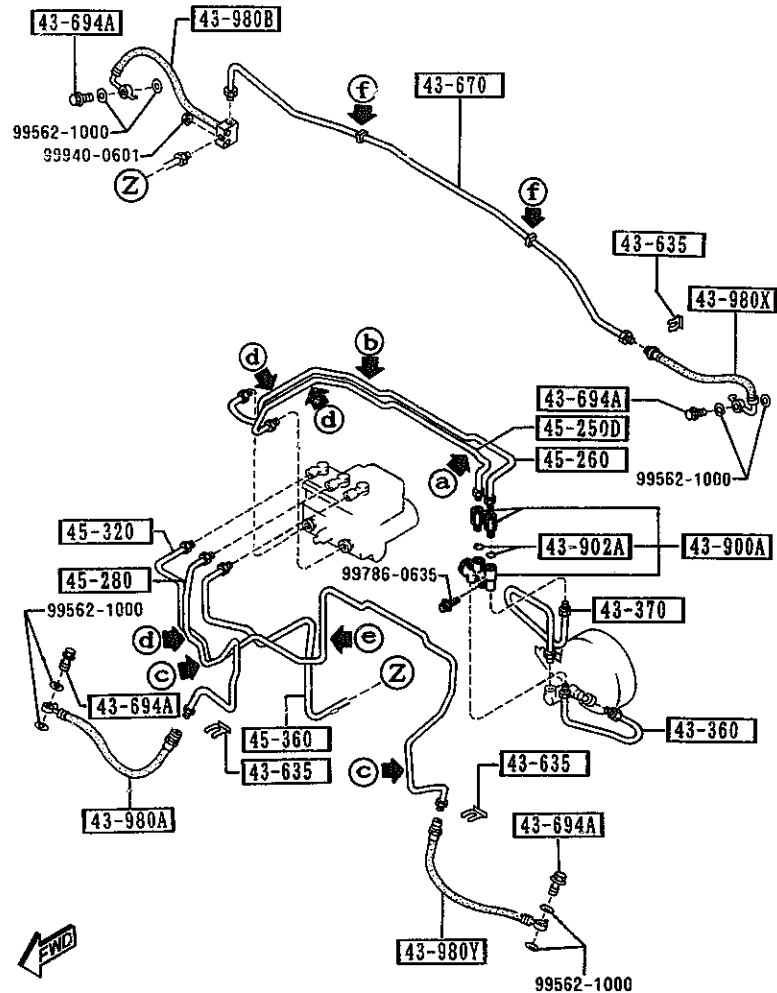
PART NO.	QTY	MODEL/RESTRICTION	MODEL/RESTRICTION	MODEL/RESTRICTION	FROM-TO
45-911C		CLIP,PIPE			
NA01-45-911	1				
45-913		HOLDER,PIPE			
NA75-45-913	1				
45-915A		HOLDER,PIPE			
B001-45-915	2				
45-915B		HOLDER,PIPE			
NA01-45-915A	1				
45-919		CLIP,PIPE			
B001-45-919B	3				

AUNA04

CAT. AUNA04-05

1995-04

4360 A BRAKE PIPINGS
(ANTI LOCK BRAKE SYSTEM)



a	b	c	d	e	f
45-910E	45-920	43-607	43-919A	45-916A	45-919

4360 A-1 BRAKE PIPINGS
(ANTI LOCK BRAKE SYSTEM)

PART NO.	QTY	MODEL/RESTRICTION	MODEL/RESTRICTION	MODEL/RESTRICTION	FROM-TO
43-360		PIPE, BRAKE			
NA23-43-360A	1				
43-370		PIPE, BRAKE			
NA23-43-370A	1				
43-607		CLIP, RR BRAKE PIPE			
G309-43-607	2				
43-635		CLIP, FLEXIBLE HOSE			
W023-43-635	3				
43-670		PIPE, BRAKE-REAR			
NA03-43-670A	1				
43-694A		BOLT, CONNECTOR			
B001-43-694A	4				
43-900A		VALVE, P. B.			
FD04-43-920	1				
43-902A		RING*O*			
NA17-43-902	2				
43-919A		HOLDER, BRAKE PIPE			
NA20-45-915	3				
43-980A		HOSE(R), FLEXIBLE-FRT			
NA75-43-810	1				
43-980B		HOSE(R), FLEXIBLE-RR			
NA75-43-980	1				
43-980X		HOSE(L), FLEXIBLE-RR			
NA75-43-990	1				
43-980Y		HOSE(L), FLEXIBLE-FRT			
NA75-43-820	1				
45-250D		PIPE NO.1, BRAKE-FRT			
NA20-45-250C	1				

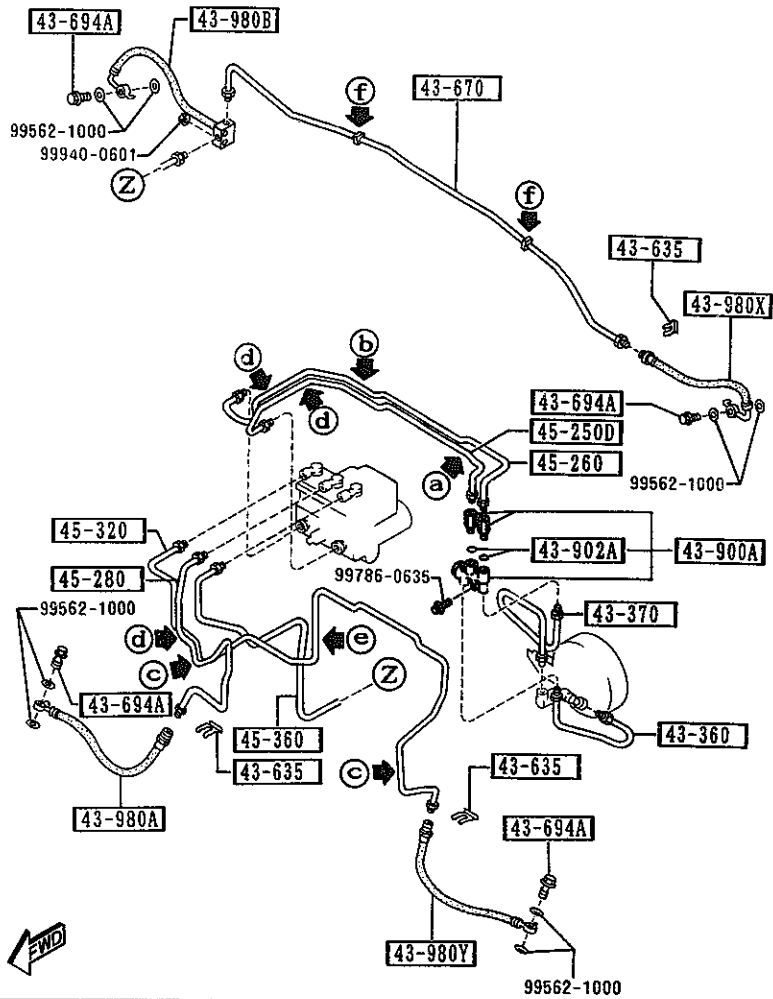
AUNA04

CAT. AUNA04-03

1995-04

1-K15

4360 A BRAKE PIPINGS
(ANTI LOCK BRAKE SYSTEM)



(a)	(b)	(c)	(d)	(e)	(f)
45-910E	45-920	43-607	43-919A	45-916A	45-919

AUNA04

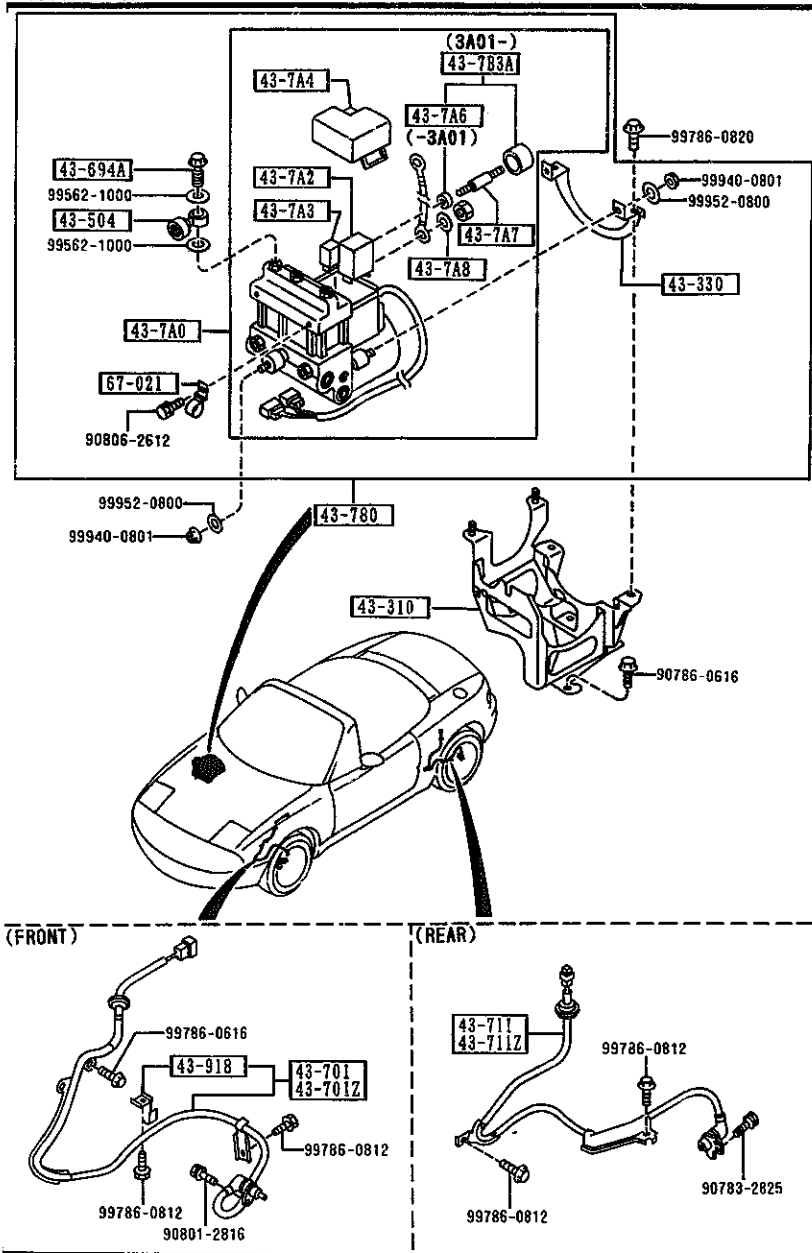
4360 A-2 * BRAKE PIPINGS
(ANTI LOCK BRAKE SYSTEM)

PART NO.	QTY	MODEL/RESTRICTION	MODEL/RESTRICTION	MODEL/RESTRICTION	FROM-TO
45-260	1	PIPE NO.2, BRAKE-FRT.			
NA20-45-249C					
45-280	1	PIPE(R), BRAKE-FRONT			
NA20-45-280B					
45-320	1	PIPE(L), BRAKE-FRONT			
NAB0-45-320					
45-360	1	PIPE NO.2, BRAKE-REAR			
NA20-45-360E					
45-910E	1	HOLDER, PIPE			
NA20-45-910A					
45-916A	1	HOLDER, PIPE			
HG31-45-915					
45-919	2	CLIP, PIPE			
B001-45-919B					
45-920	1	BRACKET			
NA20-45-920B					

CAT. AUNA04-03

1995-04

4370 ANTILOCK BRAKE SYSTEM



PART NO.	QTY	MODEL/RESTRICTION	MODEL/RESTRICTION	MODEL/RESTRICTION	FROM TO
43-310		BRACKET NO 1, A.B.S.			
NA23-43-310B	1				
43-330		BRACKET NO.5, A.B.S.			
NA23-43-330B	1				
43-504		JOINT, PIPE			
W023-43-504	3				
43-694A		BOLT, CONNECTOR			
B001-43-694A	3				
43-7A0		HYDRAULIC UNIT, A B S			
NA23-43-7A0D	1				
43-7A2		RELAY, MOTOR-HYD. UNIT			
NA23-43-7A2	1				
43-7A3		RELAY, VALVE-HYD. UNIT			
NA23-43-7A3	1				
43-7A4		COVER 'L', HYDRAULIC UNIT			
NA23-43-7A4	1				
43-7A6		RUBBER, MOUNT-HYD. UNIT			
NA23-43-7A6	1				-3A01
43-7A7		STUD, HEX-HYD. UNIT			
NA23-43-7A7	3				
43-7A8		WASHER, HYD. UNIT			
NA23-43-7A8	1				
43-7B3A		CASING, HYDRAULIC UNIT			
NA23-43-7B3	3				3A01-
43-701		SENSOR (R), FRT-A.B.S.			
NA23-43-70XE	1				
43-701Z		SENSOR (L), FRT-A.B.S.			
NA23-43-73XE	1				
3A01 NA3***-505179					

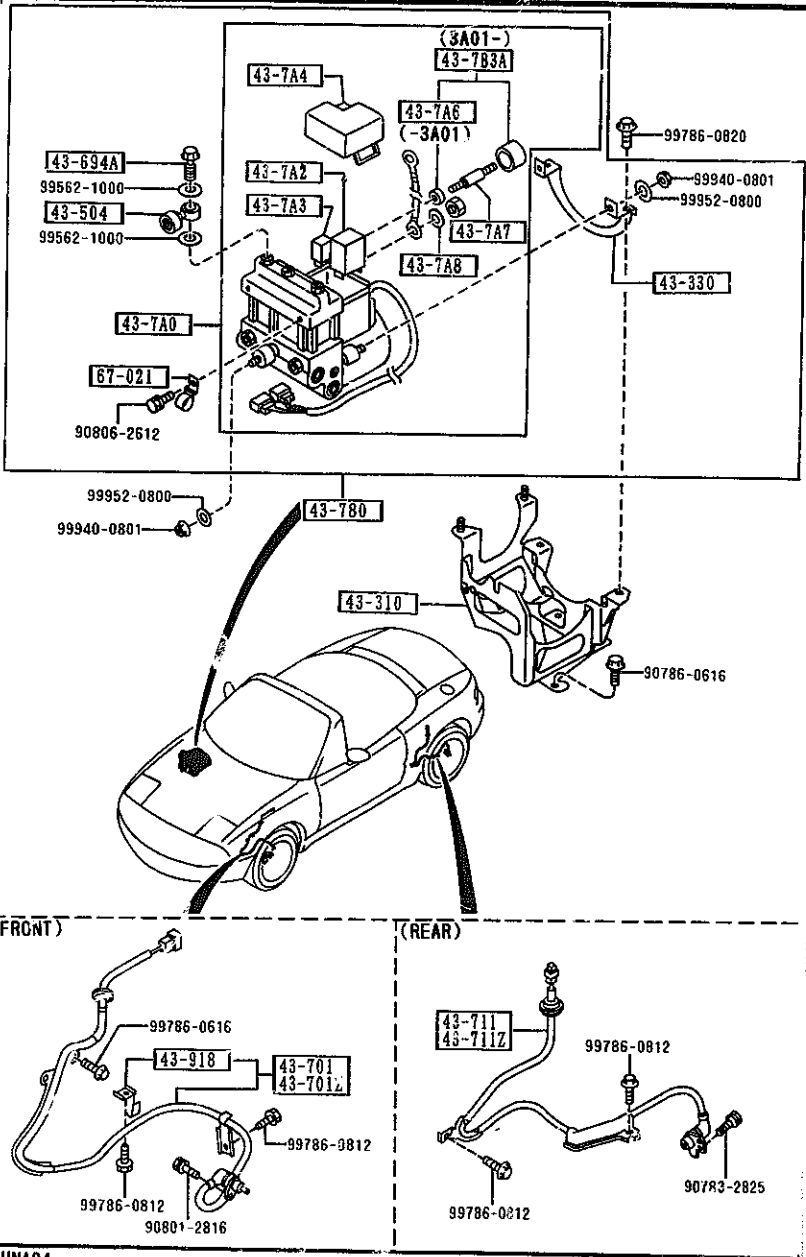
AUNA04

CAT. AUNA04-03

1995-04

4370 ANTILOCK BRAKE SYSTEM

4370 -2 * ANTILOCK BRAKE SYSTEM



PART NO.	QTY	MODEL/RESTRICTION	MODEL/RESTRICTION	MODEL/RESTRICTION	FROM-TO
43-711		SENSOR(R),RR A.B.S.			
NA23-43-71YB	1				
43-711Z		SENSOR(L),RR-A.B.S.			
NA23-43-72YB	1				
43-780		ANTILOCK BRAKE			
NA23-43-780G	1				
43-918		CLIP,SENSOR HARNESS			
NA23-43-705	2				
67-021		CLIP			
BE32-67-021	2				

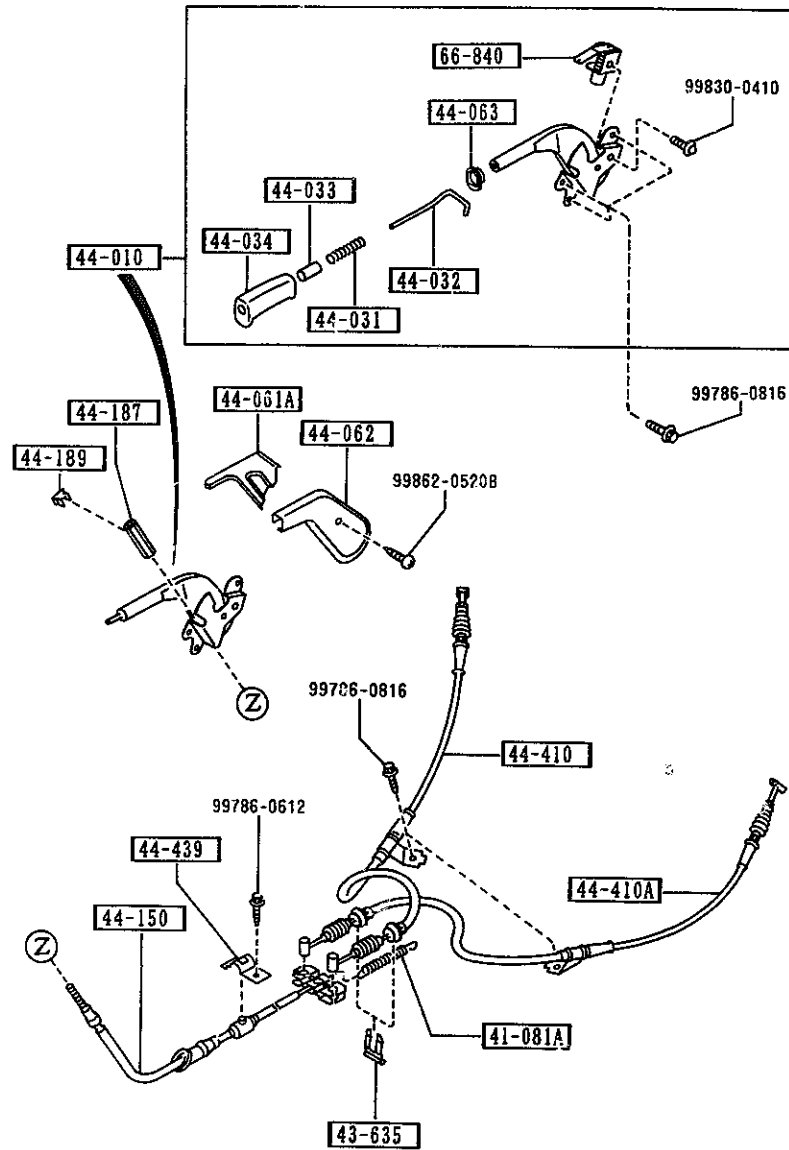
AUNA04

CAT. AUNA04-03

1995-04

4400 -1 PARKING BRAKE SYSTEM

4400 PARKING BRAKE SYSTEM



PART NO.	QTY	MODEL/RESTRICTION	MODEL/RESTRICTION	MODEL/RESTRICTION	FROM TO
41-081A	1	SPRING, RETURN			
0750-41-308	1				
43-635	2	CLIP, FLEXIBLE HOSE			
W023-43-635	2				
44-010	1	LEVER, PARKING BRAKE			
NA01-44-010	1	BASE, (URETHANE)			
N001-44-010A	1	(WOOD)			
44-031	1	SPRING, PARKING REVER			
G030-44-031	1				
44-032	1	ROD, RELEASE			
NA01-44-032	1				
44-033	1	BUTTON, RELEASE			
FB01-44-033	1				
44-034	1	CAP, PARK BRAKE LEVER			
FB01-44-034	1	BASE, (URETHANE)			
N001-44-034B	1	(WOOD)			
44-061A	1	COVER			
FB01-44-061B	1				
44-062	1	COVER			
FB01-44-062A	1				
44-063	1	SPACER			
FC01-44-063A	1	BASE, (URETHANE)			
N001-44-063	1	(WOOD)			
44-150	1	CABLE, PARKING-FRT			
NA01-44-150B	1				
AN(NA01-44-150C)	1				
NA01-44-150C	1				

3B19 NA3***-507138

-3B19
3B19-



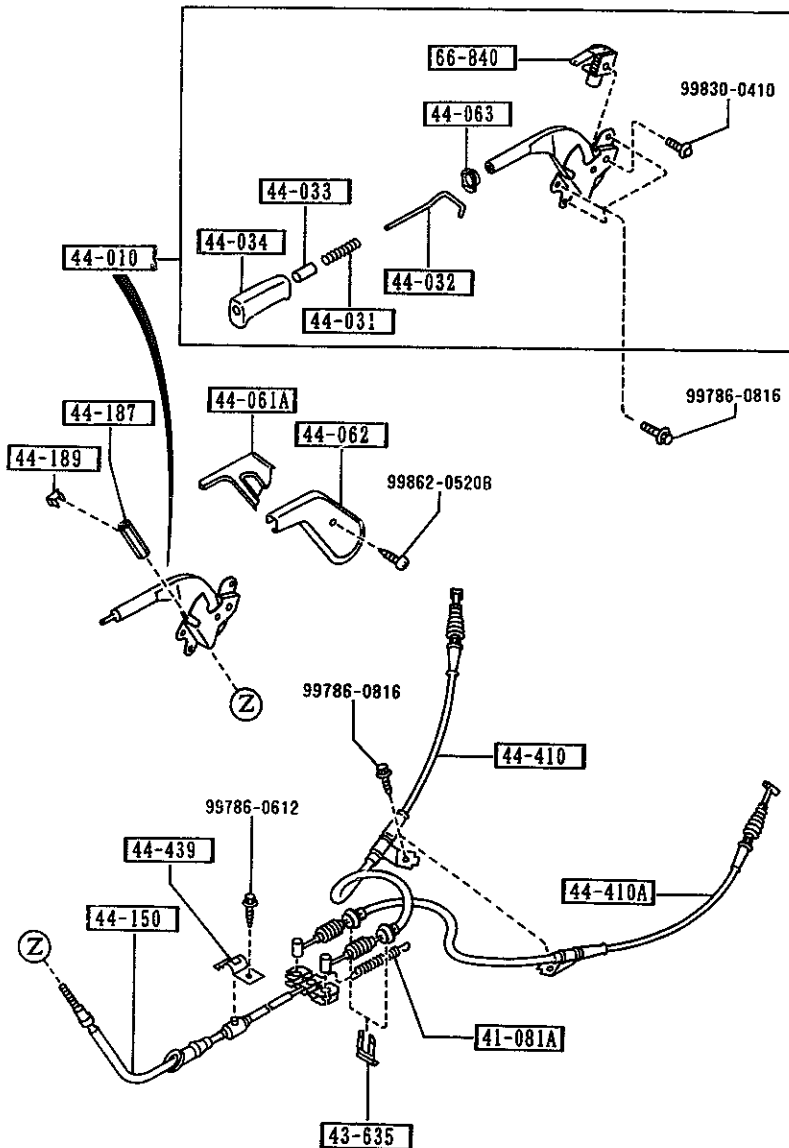
AUNA04

CAT. AUNA04-03

1995-04

4400 PARKING BRAKE SYSTEM

4400 -2 * PARKING BRAKE SYSTEM



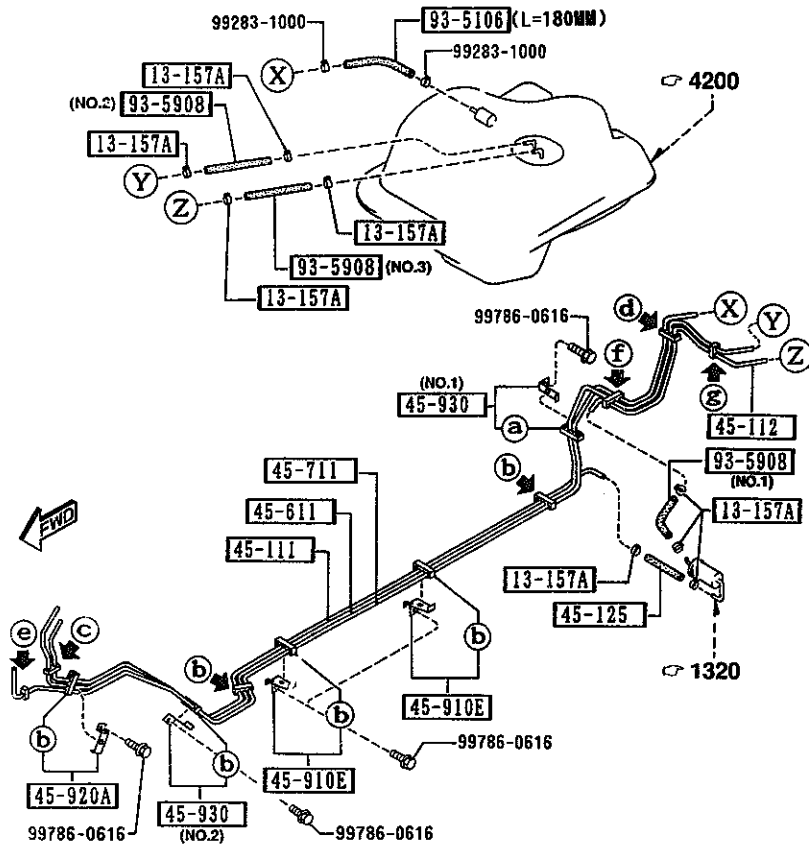
PART NO.	QTY	MODEL/RESTRICTION	MODEL/RESTRICTION	MODEL/RESTRICTION	FROM-TG
44-187	1	SCREW, ADJUST			
0866-44-187A	1				
44-189	1	CLIP			
0866-44-189	1				
44-410	1	CABLE(R), R.-PARK.			
NA75-44-410	1				
44-410A	1	CABLE(L), R.-PARK.			
NA75-44-420	1				
44-439	1	CLIP, CABLE			
1011-44-439	1				
66-840	1	SWITCH, PARKING LAMP			
GJ21-66-450A	1				

AUNA04

CAT. AUNA04-03

1995-04

4500 FUEL PIPINGS



(a)	(b)	(c)	(d)	(e)	(f)	(g)
45-912D (NO.1)	45-912D (NO.2)	45-913	45-913A	45-914	45-915	45-921

93-5106		99351-06999	L=180MM

4500 -1 FUEL PIPINGS

PART NO.	QTY	MODEL/RESTRICTION	MODEL/RESTRICTION	MODEL/RESTRICTION	FROM-TO
13-157A		CLIP			
8574-13-157	8				
45-111		PIPE, FUEL-MAIN			
NA01-45-111	1				
45-112		PIPE, FUEL-MAIN			
NA75-45-112A	1				
45-125		HOSE, FUEL			
99359-0815	1				
45-611		PIPE, FUEL-RETURN			
NA75-45-611A	1				
45-711		PIPE, EVAPORATION			
NA75-45-711A	1				
45-910E		HOLDER, PIPE			
H266-45-910A	2				
45-912D		HOLDER 'A'			
H260-45-912	1	(ILLUST. NO.1)			
H266-45-912	6	(ILLUST. NO.2)			
45-913		HOLDER, PIPE			
NA01-45-912	1				
45-913A		CLIP, PIPE			
NA01-45-913	1				
45-914		HOLDER, PIPE			
FB01-45-914	1	NIFUKO			
45-915		CLIP, PIPE			
NA01-45-914	1				
45-920A		HOLDER 'B', PIPE			
H266-45-920A	1				

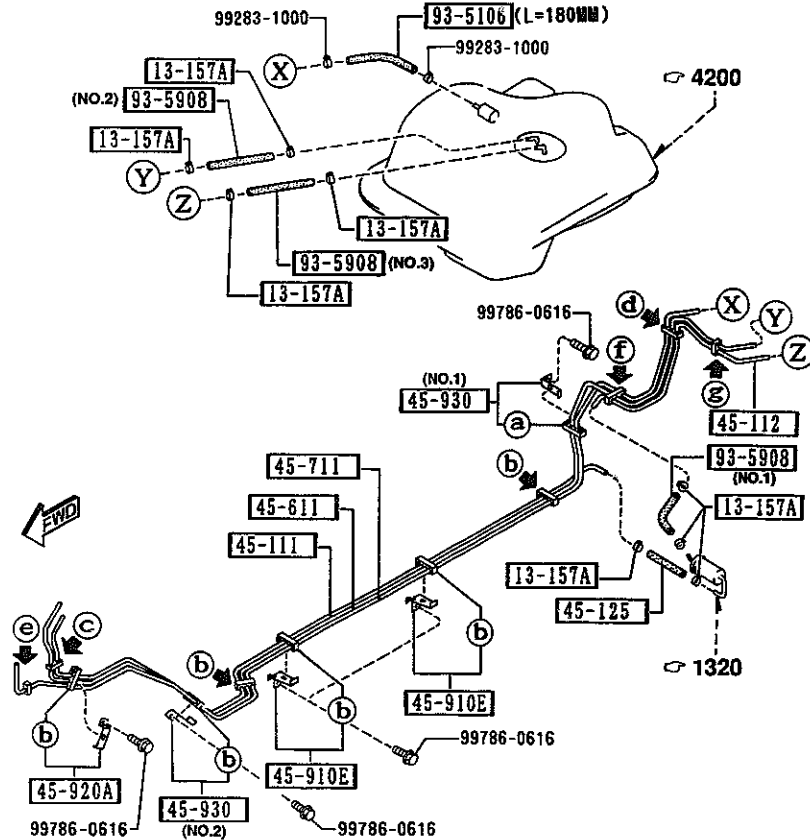
AUNA04

CAT. AUNA04-03

1995-04

4500 FUEL PIPINGS

4500 -2 * FUEL PIPINGS



a	b	c	d	e	f	g
45-912D (NO.1)	45-912D (NO.2)	45-913	45-913A	45-914	45-915	45-921
93-5106				99351-06999	L=180MM	

PART NO.	QTY	MODEL/RESTRICTION	MODEL/RESTRICTION	MODEL/RESTRICTION	FROM-TO
45-921		CLIP, PIPE			
B210-45-917	1				
45-930		HOLDER 'C', PIPE			
H260-45-930	1	(ILLUST. NO.1)			
H266-45-930A	1	(ILLUST. NO.2)			
93-5106		HOSE			
99351-06999	1				
93-5908		HOSE			
99359-0816	1	(ILLUST. NO.1)			
99359-0817	1	(ILLUST. NO.2)			
99359-0818	1	(ILLUST. NO.3)			

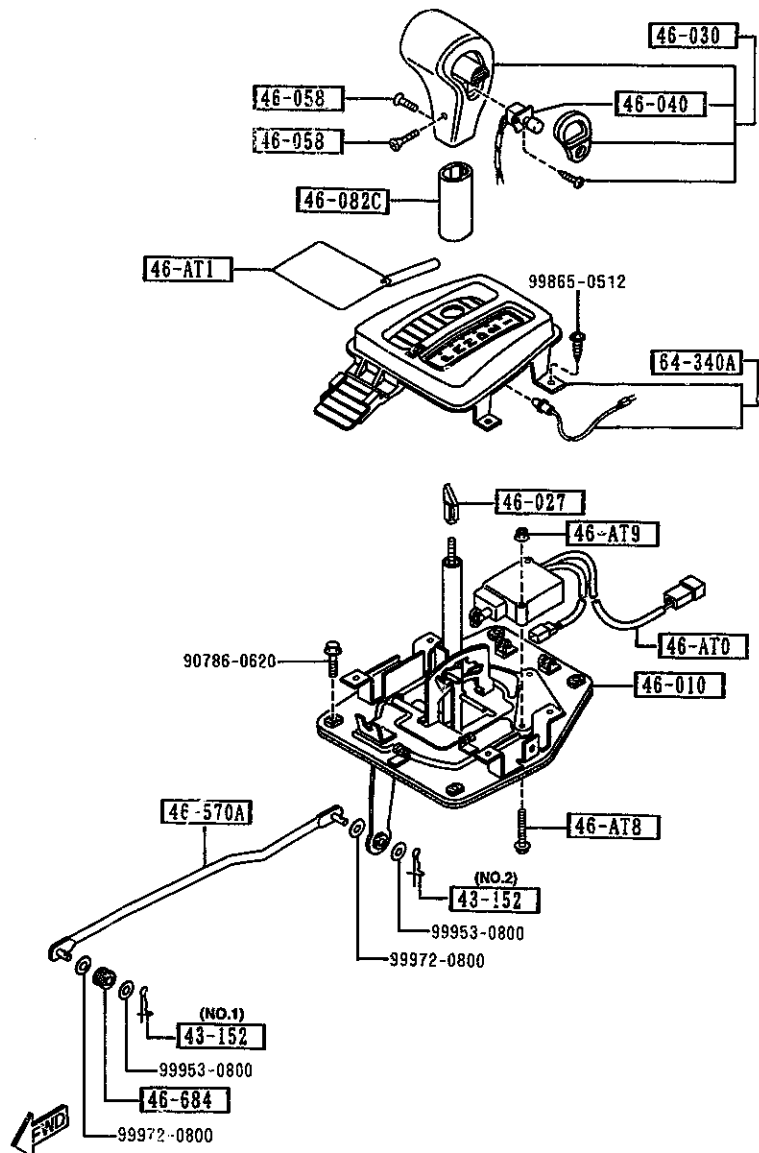
AUNA04

CAT. AUNA04-03

1995-04

4600 CHANGE CONTROL SYSTEM (AT)

4600 -1 CHANGE CONTROL SYSTEM (AT)



PART NO.	QTY	MODEL/RESTRICTION	MODEL/RESTRICTION	MODEL/RESTRICTION	FROM-TO
43-152		PIN,SNAP			
D001-43-152	1	(ILLUST. NO.1)			
FB02-43-152A	1	(ILLUST. NO.2)			
46-AT0		ACTUATOR,SHIFT LOCK			
NAB1-46-AT0A	1				
46-AT1		TAG,CAUTION-CHANGE			
FD02-46-AT1	1				
46-AT8		SCREW			
H338-46-AT8	2				
46-AT9		NUT			
H338-46-AT9	2				
46-010		LEVER,SELECT			
NAB1-46-100	1				
46-027		CAM,CHANGE LEVER			
H338-46-027	1				
46-030		KNOB,CHANGE LEVER			
NAB1-46-030A	1				
46-040		SWITCH,OVER DRIVE CONTROL			
NAB1-46-040	1				
46-058		SCREW,CHANGE LEVER KNOB			
FB02-46-058C	2				
46-082C		COVER,SELECT LEVER			
NA03-46-088	1				
46-570A		ROD,SELECTOR-REAR			
NA03-46-570	1				
46-684		BUSH			
1015-46-684A	1				

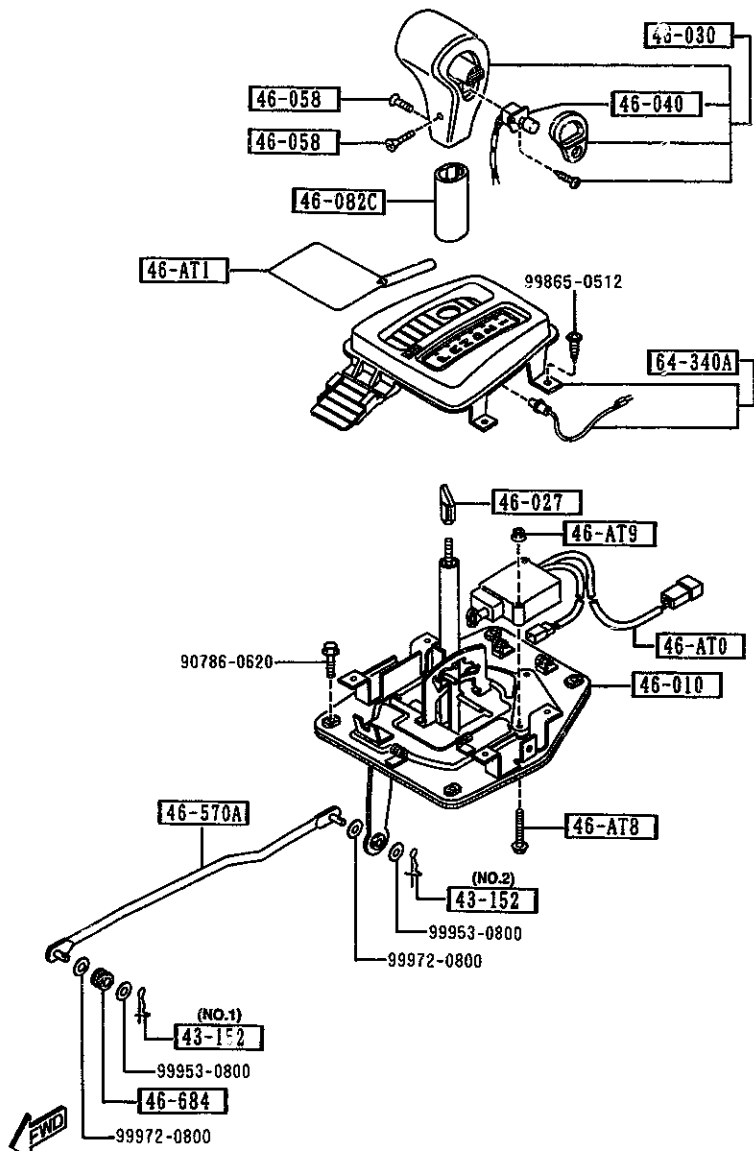
AUNA04

CAT. AUNA04-03

1995-04

4600 CHANGE CONTROL SYSTEM
(AT)

4600 -2 * CHANGE CONTROL SYSTEM
(AT)



PART NO.	QTY	MODEL/RESTRICTION	MODEL/RESTRICTION	MODEL/RESTRICTION	FROM-TO
----- 64-340A -----		INDICATOR			
NA81-64-350 AN(NA81-64-350A)	1				-4201
NA81-64-350A	1				4201-

4201 NA3***-511601

AUNA04

CAT. AUNA04-03

1995-04